

# Bespoke Dishwasher Panel Installation Guide

## Installing the custom front panel

What you'll need:



DW60CB750FAP  
Dishwasher

+



DW-S24PEU39  
Beige Panel

or

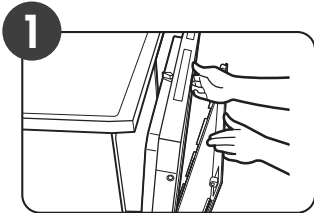


DW-S24PEUB0  
Black Panel

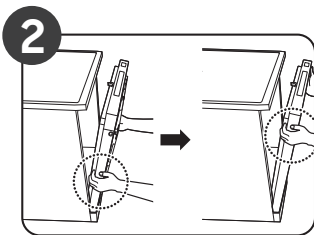
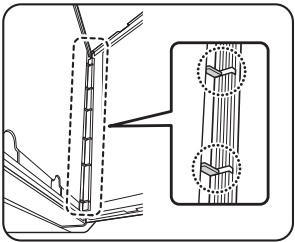
=



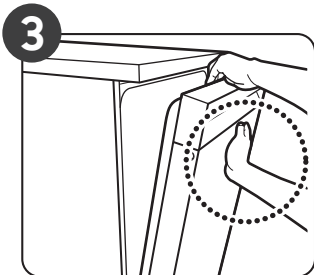
Complete unit  
(shown with beige panel)



1 Open the door and fit the custom panel in the front bottom of the door. Make sure that the ribs of the panel fit into the corresponding holes (totalling 6) of the door.



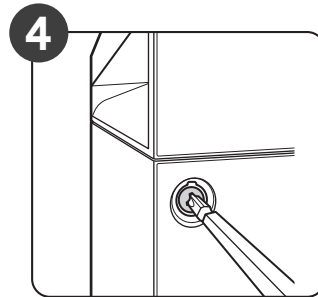
2 While holding the door and the custom panel with both hands, press the panel evenly from bottom to top to lock into the dishwasher.



3 When both sides of the panel lock into place, press the top centre of the custom panel to secure it to the top of the door.

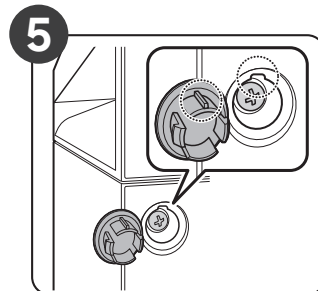
**NOTE:**

Make sure that the custom panel fits in the dishwasher properly. If the gap between the dishwasher and the custom panel is below 2 mm, proper installation is done. For 2 mm or more, remove the custom panel and try again.

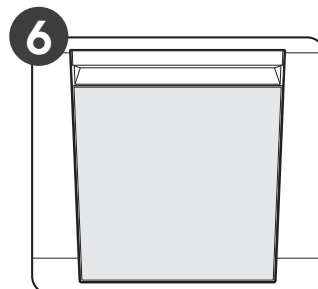
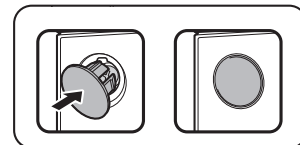


4 Unpack the caps and screws (two for each) included in the product package. Tighten the screws on either side of the dishwasher.

**NOTE:** When tightening the screw on either side, make sure to check the gap between either side as the custom door may lean in either side.



5 Insert the caps on either side. Make sure the rib of the cap fits in the hole of the dishwasher in the right direction.



6 This is the completion of mounting the custom panel.