

2026 Samsung Display Solutions

Innovating Displays Beyond Boundaries



About Samsung Electronics Co., Ltd.

Samsung Electronics Co., Ltd. inspires the world and shapes the future with transformative ideas and technologies. The company is redefining the worlds of TVs, smartphones, wearable devices, tablets, digital appliances, medical equipment, network systems, and semiconductor and LED solutions. For the latest news, please visit the Samsung Newsroom at news.samsung.com.

Display Solutions

For more information about Samsung Display Solutions, visit www.samsung.com/business

Copyright © 2026 Samsung Electronics Co., Ltd. All rights reserved. Samsung is a registered trademark of Samsung Electronics Co., Ltd. Specifications and designs are subject to change without notice. Non-metric weights and measurements are approximate. All data were deemed correct at time of creation. Samsung is not liable for errors or omissions. All brand, product, service names and logos are trademarks and/or registered trademarks of their respective owners and are hereby recognized and acknowledged.

Samsung Electronics Co., Ltd.
129, Samsung-ro, Yeongtong-gu, Suwon-si, Gyeonggi-do, 16677 Republic of Korea

Samsung, a global brand

Since its establishment in 1969, Samsung Electronics has grown into a global technology leader, driving innovation and creating new possibilities for people and businesses worldwide.

With a presence spanning the globe, Samsung invests heavily in R&D to pioneer breakthrough technologies. Our commitment to relentless innovation drives our mission to create a better world for all.

1. Apple
2. Microsoft
3. Amazon
4. Google
5. **Samsung**
6. Toyota
7. Mercedes-Benz
8. Coca-Cola
9. Nike
10. BMW



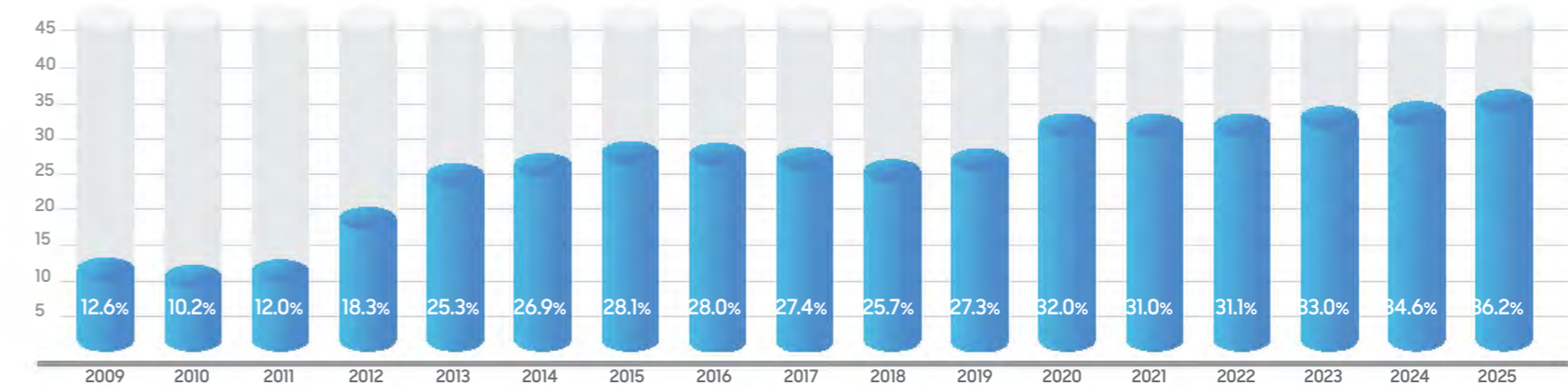
Continuing No. 1 market leadership in display solutions for 17 years

Given its excellence in broad manufacturing expertise and premium picture quality technology, it is no wonder that Samsung has been ranked the No. 1 in the display market for 17 consecutive years.

Samsung has consistently provided enterprises with display technologies that drive business growth and operational efficiency. Through continuous innovation, including The Wall, the world's first modular display based on micro LED technology, Samsung has successfully delivered differentiated signage products tailored to unique business needs. From diverse product portfolios to software solutions for management, our end-to-end approach enables customers to maximize performance and focus on what matters most.

For the past 17 years, Samsung has pushed the boundaries of display technology innovation. We are committed to maintaining our category leadership by continuously bringing the most innovative display solutions to market.

Smart Signage M/S (unit)



Source :
* 09-12 : Display Industry research company "Display Search".
* 13-25 : Market research company "Omdia".

Note :
* Consumer TVs and Hospitality TVs used for signage are excluded.
* The 2025 data excludes Q4 market share.





Innovating Displays Beyond Boundaries

Table of Contents

01 Smart Signage

Next-Gen Displays

- 08 Spatial Signage
- 10 Color E-Paper

Impact

- 12 Supersized Signage
- 14 UHD Signage
- 16 Video Wall

Interactive & Engagement

- 18 Interactive Display
- 20 Samsung Flip
- 22 Touch Signage

Environment-specific

- 24 Outdoor Signage
- 26 Window Signage

Specialty

- 28 Stretched Signage
- 30 Small Signage

TV-based

- 32 Business TV

02 LED Signage

- 36 The Wall
- 40 Onyx
- 42 Indoor LED
- 44 High Brightness LED
- 46 All-in-One LED

03 Hospitality TV

- 50 The Frame
- 52 Crystal UHD
- 54 Full HD

04 Solution

- 58 Samsung VXT
- 60 LYNK Cloud

Smart Signage

Samsung Smart Signage delivers a comprehensive portfolio for today's business environments. From next-generation displays that introduce new visual possibilities—such as immersive 3D experiences and paper-like digital signage—to high-impact installations for large spaces, interactive collaboration displays, and specialized models built for demanding conditions, Samsung provides the right solution for every use case.

Next-Gen Displays

- 08 Spatial Signage
- 10 Color E-Paper

Impact

- 12 Supersized Signage
- 14 UHD Signage
- 16 Video Wall

Interactive & Engagement

- 18 Interactive Display
- 20 Samsung Flip
- 22 Touch Signage

Environment-specific

- 24 Outdoor Signage
- 26 Window Signage

Specialty

- 28 Stretched Signage
- 30 Small Signage

TV-based

- 32 Business TV





Spatial Signage

SMHX

Samsung's Spatial Signage delivers immersive realism through innovative display technology, transforming ordinary content into striking 3D visuals that capture attention. Powered by Samsung's patented 3D plate technology, it adds depth and dimension to any scene without requiring special glasses or separately created 3D content. The result is a vivid, engaging visual experience that feels closer to reality.

Beyond its visual performance, Spatial Signage is designed for ease and flexibility. Its slim 52mm profile enables clean, space-saving installation across various environment. Samsung VXT with AI Studio empowers businesses to easily manage content, adjust 3D effects and monitor devices remotely.

Highlights

- Virtual 3D Display
- UltraThin Design
- Lite Installation
- AI Studio
- Quantum Processor
- Anti-glare
- Samsung VXT



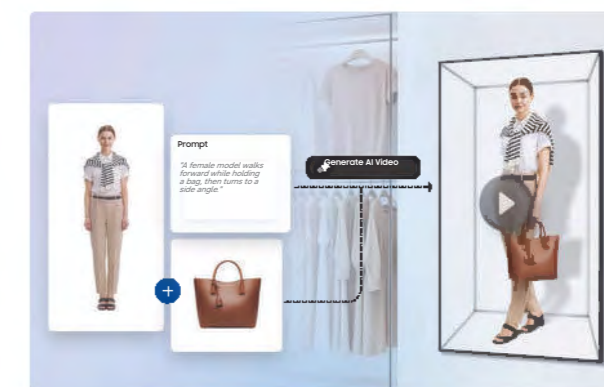
Virtual 3D Display

Powered by Samsung's patented 3D plate technology, Spatial Signage brings 2D content to life. Vivid details feel almost within reach, making every moment unforgettable.



UltraThin Design

Built on an ultra-slim 52mm profile, Spatial Signage redefines how 3D displays integrate into commercial spaces. Its refined form reduces visual bulk while maintaining the familiar proportions of standard signage, enabling seamless integration of 3D visuals across a wide range of environments.



AI Studio

Samsung VXT's AI Studio app makes 3D video creation simple—just upload images and write a prompt to generate video content. Embedded within Samsung VXT, this AI-powered tool converts images into dynamic, 3D-style visuals designed for Spatial Signage, helping businesses create engaging content quickly while reducing production complexity.



Color E-Paper

EMDX-A EMDX

Samsung Color E-Paper is a paper-thin, lightweight display engineered for ultra-low power consumption. Equipped with a built-in battery and supported by a mobile app, it delivers paper-like picture quality without requiring dedicated infrastructure - offering a practical way to support the digital transition of traditional paper-based communication. Supporting up to 77K colors, the display enables more detailed, natural color expression while maintaining the visual simplicity of printed materials.

Samsung Color E-Paper incorporates recycled materials throughout its construction. The 32-inch model features housing made with 55% recycled plastics, while the 13-inch model uses 45% recycled plastics and incorporates 10% bio resin derived from plankton oil. The 13-inch model is the world's first product to adopt this innovative bio-based plastic, verified by UL*. Additionally, packaging for both models—including the box, cushion, handle and accessory box—is made entirely from paper.

* UL verified that Samsung 13-inch Color E-Paper's housing materials use bio-based plastic, 10% of which is composed of phytoplankton bio resin derived from plankton oil.



Paper-thin Design

At just 17.9mm, Samsung Color E-Paper seamlessly enhances diverse business environments with unmatched elegance and aesthetically-pleasing design.

* Both 13-inch and 32-inch Samsung Color E-Paper models include two rear holders and two hanging brackets. The 13-inch model also includes two simple stands. Other accessories are not included and must be purchased separately.



Highlights

- Paper-thin Design
- Versatile Placement with Embedded Battery
- Energy Efficient Usage
- Made with Recycled Materials
- Color Imaging Algorithm
- Samsung E-Paper App
- Samsung VXT



Energy Efficient Usage

Experience ultra-low power performance with Samsung Color E-Paper. Static images can be displayed with zero watts* of power consumption, significantly reducing energy use without compromising reliability. This makes it an ideal choice for power-conscious facilities.

* Activities related to content refresh, content changes, or device monitoring and control will require additional power.
* Content refresh is essential and automatically performed when the power cable or battery is connected.
* Screen flickering during the refresh or image change is normal due to the characteristics of EPD technology.
* Images simulated for illustrative purposes only.



Samsung E-Paper App

Available on Android and iOS mobile devices, the dedicated Samsung E-Paper App allows users to easily control the Samsung Color E-Paper series locally.

* Samsung E-Paper App requires mobile device running Android™ 10 or later or iOS 15 or later.



Supersized Signage

- 115" QHFX
- 105" QPDX-5K
- 98" QHC
- 98" QMC

Samsung's Supersized Signage redefines large-format display experiences for premium commercial environments. The 115-inch QHFX delivers commanding visual impact with an ultra-large screen that supports both landscape and portrait installation, enabling flexible use across diverse spaces. With its super-slim 34.1mm profile and anti-glare panel, it maintains a refined, modern presence while ensuring clear visibility even in bright lighting.

The 105-inch QPDX-5K complements the lineup with a 21:9 aspect ratio optimized for immersive video conferencing and corporate collaboration. Together, these displays elevate presence, clarity and communication across executive, lobby and meeting spaces.

Highlights

- Supersized Screen
- Portrait Installation
- Anti-glare
- 24/7 Operation
- Super Slim Design
- SMARTVIEW+
- Samsung Knox Security
- Samsung VXT
- 21:9 Ultra Wide Screen *



QPDX-5K 105-inch

Samsung's QPDX-5K features a 21:9 aspect ratio optimized for video conferencing. Whether attendees are onsite or remote, the display ensures equal engagement, providing a truly immersive and collaborative meeting environment.

* 21:9 Ultra Wide Screen (available on 105-inch QPDX-5K)



Supersized Screen

The expansive 115-inch screen creates immersive visual experiences and enhances communication across commercial and business environments. With just a single display, the QHFX delivers the large-scale impact typically achieved with multiple screens—offering a simpler, more seamless solution for bold visual expression.



Portrait Installation

Samsung's supersized signage models offer both landscape and portrait installation, enabling flexible deployment across a wide range of environments. Vertical orientation unlocks full-length visual possibilities—from life-sized product displays and fashion imagery to tall-format brand videos—creating impactful large-scale experiences that expand creative possibilities.



Super Slim Design

Despite its ultra-large 115-inch screen, the QHFX features an impressively slim profile at just 34.1mm*. This refined depth enhances installation flexibility and elevates the overall aesthetic, making it perfect for modern environments where design and performance are equally important.

* The 105-inch QPDX-5K, 98-inch QHC and 98-inch QMC models have a depth of 48.1mm



UHD Signage

- QHC
- QMC
- QBC

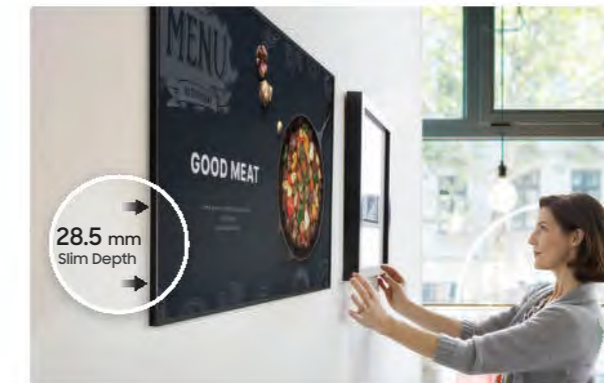
Samsung's UHD QHC, QMC, and QBC series feature the slimmest designs in the standalone lineup, adding sophistication to any business environment while optimizing space utilization. These products captivate audiences with breathtaking realism and vibrant color reproduction.

Powered by Tizen OS, they offer exceptional performance and an unparalleled user experience, ensuring stable operations and enhanced security tailored to meet any business requirement. The intuitive Home Screen interface streamlines navigation, enabling seamless control across functions.

Highlights

- Ultra Slim Design (28.5mm)*
- Even Bezel
- Dynamic Crystal Color
- Anti-glare**
- 24/7 Operation
- Portrait Installation
- SMARTVIEW+**
- Smart Calibration
- Home UI
- Samsung VXT***

* The 98-inch QHC and 98-inch QMC models have a depth of 48.1mm
 ** Anti-glare and SMARTVIEW+ are not supported on QBC series and 32-inch QMC model.
 *** Samsung VXT must be purchased separately.



Ultra Slim Depth

At just 28.5mm*, QHC / QMC / QBC series delivers Samsung's slimmest UHD signage display. It is compatible with a Slim Fit Wall Mount**, which allows you to install it neatly and easily in any environment.

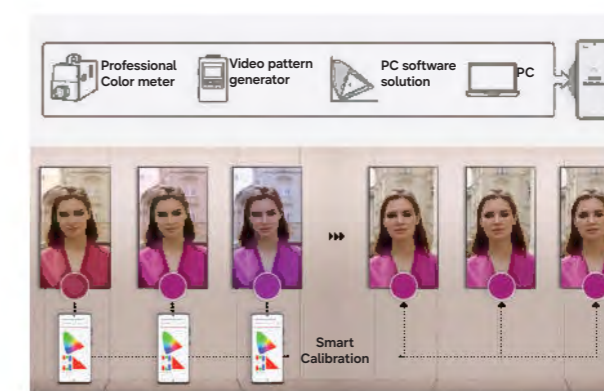
* The 98-inch QHC and 98-inch QMC models have a depth of 48.1mm.
 ** Slim Fit Wall Mount must be purchased separately and is not supported on the 98-inch QHC and 98-inch QMC models.



Quantum Processor 4K

Samsung's industry-leading video processing technology enhances every piece of content for clarity and consistency. Intelligent UHD upscaling technology, powered by Samsung's 4K Processor, elevates lower-resolution video to UHD, providing professional picture quality.

* When compared to Samsung's FHD model.
 * Viewing experience may vary according to types of content and format.



Smart Calibration

Guarantee complete brand consistency across every display in every location. Using the Samsung mobile app, Smart Calibration ensures all displays are calibrated correctly, showcasing brand logos and other collateral in the exact colors required.



Video Wall

- VHC-R
- VMC-R
- VHC-E
- VMC-E
- VMB-U

Samsung's Video Wall delivers a refined, seamless viewing experience through an exceptionally narrow bezel design. Bright, anti-glare panels help maintain clear visibility across various viewing positions and lighting environments, while advanced factory calibration ensures consistent brightness and color uniformity. Intuitive PC and mobile calibration tools make fine-tuning the Video Wall simple and efficient.

Highlights

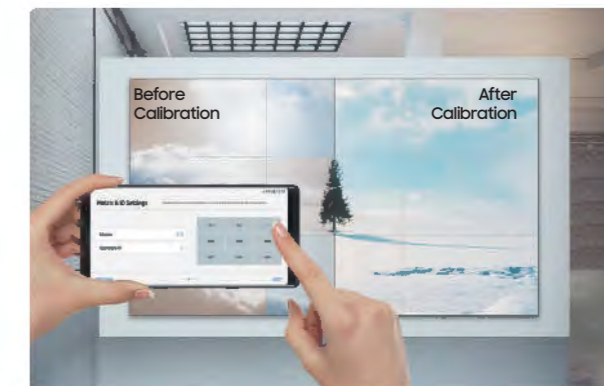
- Various Bezel Width Options
- Wide Viewing Angle
- Non-glare Panel
- 24/7 Operation
- Multi-step Factory Calibration
- Convenient Mobile Calibration
- 4K UHD Resolution by Daisy Chain
- Easy Installation*
- IP5x Rating
- EMC Class B**
- ISTA-certified Packaging

* Samsung's special wall mount accessories must be purchased separately.
 ** EMC class B certification varies by video wall model.



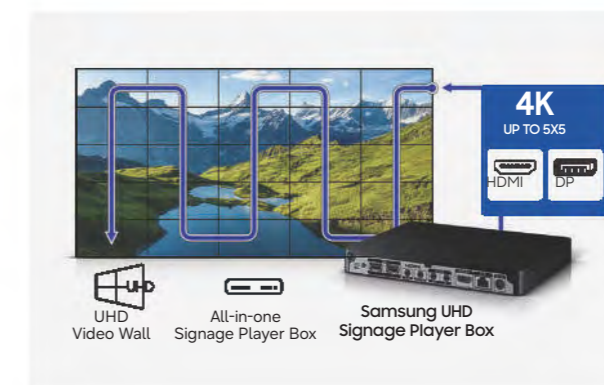
Uninterrupted Visual Experience

A narrow bezel options—0.88 mm to 3.5 mm bezel-to-bezel— minimize the visual distractions across multiple screens. The display's non-glare panels provide better visibility regardless of ambient light, 24/7.



Precise and Convenient Calibration

Samsung's multi-step factory calibration ensures brightness and color uniformity across all displays in the Video Wall. Users can also easily maintain display consistency through Samsung's intuitive PC and mobile calibration tools.



Efficient and Reliable Operation

Using daisy chain with DP1.2 and HDMI ports, Samsung's Video Wall can project UHD content across multiple screens in up to a 5x5 configuration. ISTA-certified packaging is designed to minimize possible damage during shipment.



Interactive Display

- WAFX-P
- WAF
- WEFX*

Samsung Interactive Display is designed for dynamic learning environments where interaction matters. Powered by Android™ OS, it delivers an intuitive interface, a smooth writing experience, and responsive multi-touch collaboration. As an EDLA-certified display, it provides official access to Google apps and services, ensuring security and reliability. Built-in AI-powered features further support smarter lessons, streamlined workflows, and engaging classroom experiences.

Highlights

- Powered by Android™ OS
- Octa-core CPU
- EDLA Certification
- Annotation On
- Dual Pen
- 3-in-1 USB-C port / HDMI Out / OPS (Open Pluggable Specification)
- AI Write & Search
- All-in-One Video Call System*

* The All-in-One Video Call System, including the built-in camera, microphone, and high-performance speakers, is available on the WAFX-P series only.



WEFX (Non-OS)*

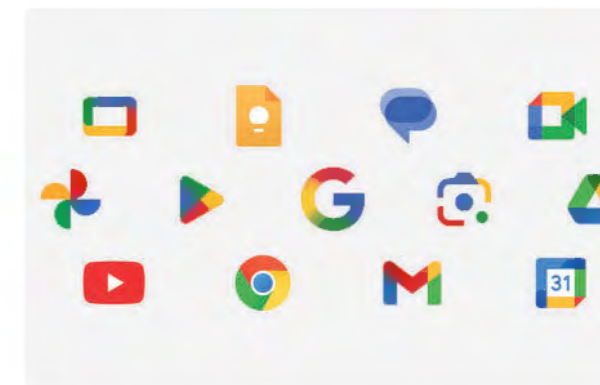
Stripped of unnecessary complexity, packed with just what you need. Samsung's OS-Free interactive Display provides a simple, seamless way to present, write, and collaborate in any space. Just connect your device and work in the environment you already know—no software installation, no setup, no training required. It's the effortless way to begin every meeting, lesson, or project, so you can focus on ideas, not instructions.

* WEFX is a non-OS model and may not support the highlighted features listed above.



Android™ OS & Octa-core CPU

Experience intuitive, fast, and fluid performance powered by Android™ OS and an Octa-core CPU. Whether you're in the classroom or the meeting room, enjoy seamless access to educational tools, apps, and multitasking features.



EDLA Certification

As a Google EDLA-certified interactive display, the WAFX-P comes with Google apps and services. It supports Google Play and delivers a streamlined experience designed to enhance education and collaboration.



AI Write & Search

Seamlessly transition your handwritten notes into the digital world. With WAFX-P's embedded AI and digital ink recognition, simply circle handwritten notes on the screen and tap the search icon to access web results, images, and more - all without typing.



Samsung Flip

WMFX

Samsung Flip creates a meeting environment where ideas flow as soon as inspiration strikes. With instant writing on power-up, it works like a true whiteboard, keeping discussions smooth and uninterrupted. Its intuitive home screen provides quick access to frequently used apps and tools, adapting naturally to any meeting style. Enhanced clarity and fluid interaction make it easier to express and share ideas with confidence.

Highlights

- Natural & Precise Writing
- Enhanced Whiteboard
- Easy Multitasking
- Annotation On
- Flip Home
- Rotatable Design*(55", 65") / Slim Design*(75", 85")
- Workspace
- Samsung Knox Security
- SMARTVIEW+
- Samsung VXT
- USB-C Hub / HDMI Out / OPS (Open Pluggable Specification)



Natural & Precise Writing

Experience smooth, accurate pen performance with 26ms response time and 2,048 pressure levels. Every pen stroke feels natural, while flexible erasing keeps your creative flow uninterrupted.



Enhanced Whiteboard

Start writing instantly. Flip's enhanced whiteboard lets you edit, move, and resize notes freely — transforming handwriting and shapes into clean, professional visuals.



Samsung Knox Security

Powered by Samsung Knox, Flip safeguards every idea with multi-layered protection from boot-up to shutdown, ensuring worry-free collaboration.



Touch Signage

QMB-T QMC-T QBC-T

Samsung Touch Signage is designed to enable intuitive, touch-based interaction for effective communication across a wide range of business environments. Available in a lineup ranging from compact 13-inch models up to 55-inch displays, it allows users to navigate content and information directly on the screen—supporting diverse business applications.

Highlights

- All-in-One Touch Solution
- 4K UHD *
- Anti-glare
- IP5X rating
- Center IR
- 24/7 *

* 4K UHD resolution and 24/7 operation apply only to the QMB-T model.



All-in-One Touch Solution

Touch interaction is enabled without the need for additional external devices. Interactive content can be deployed and operated through a single display, simplifying setup and streamlining operations across various business environments.



Center IR

With center IR, each display receives IR signals directly to the panel, allowing easy and convenient remote control. When mounted, the display doesn't require an IR receiver cable extension. Built-in Wi-Fi allows wireless remote management for both content and display.



Anti-glare

Designed with an anti-glare panel and optimized haze level, the Samsung Touch Signage helps reduce reflections from indoor lighting and daylight. In bright retail spaces or open offices, your content stays clear and easy to read.



Outdoor Signage

- OHA
- OHDX
- OHB

Samsung Outdoor Signage models are built for harsh environments, allowing you to effectively deliver your business message beyond the storefront. Even in varying weather, the OHDX ensures your brand presence stays powerful and memorable to captivate your audience year-round.

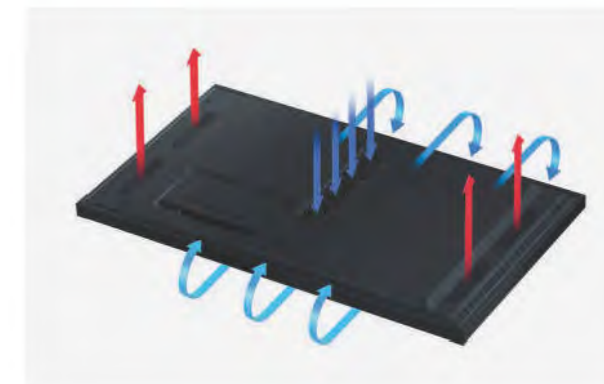
Highlights

- Verified by UL Solutions for Outdoor Visibility
- Heat Dissipation Structure
- IP56
- Auto Brightness Sensor
- Additional Glass Installable Structure
- Samsung VXT
- IK10



Verified by UL Solutions for Outdoor Visibility

With a brightness level of 3,500nits (peak 4000nits) Samsung Outdoor Signage series delivers 24/7 performance, providing clear and vivid content in outdoor environments. OHDX is verified by UL Solutions for outdoor visibility brightness, ensuring your message is effectively communicated even in direct sunlight.



Heat Dissipation Structure*

Featuring an advanced heat dissipation system for efficient air circulation, OHDX's design prevents heat damage that is commonly found in high-brightness outdoor displays. The display's effective cooling measures help ensure stable and reliable performance in harsh environments.

* Availability of this feature may vary by model.



IP56

With certified IP56-rated protection, Samsung Outdoor Signage series delivers a dustproof and waterproof design that withstands physical impacts. This ensures dependable operation across a variety of outdoor conditions for consistent performance.

Window Signage

- OMA
- OMN, OMN-D
- OMB
- OMDX

Samsung Window Signage enhances your storefront to attract customers. Featuring high brightness and clarity, even in direct sunlight, the display ensures your messages stand out. The slim design enables maximum space utilization while creating captivating and engaging customer experiences.



Highlights

- 4K UHD Resolution*
- High Brightness**
- Auto Brightness Control
- Polarized Sunglass Support
- 24/7 Operation
- Slim Design
- IP5X Rating
- Overheating Mitigation
- Clean Cable Management
- Built-in Wi-Fi
- Dual-sided Screen***

* Resolution and High-brightness specification may vary by model.
 ** OMN-D model is 3,000 / 1,000 nit (Dual-sided).
 *** Dual-sided screen is only available on OMN-D series.



Brilliant Presentation for All

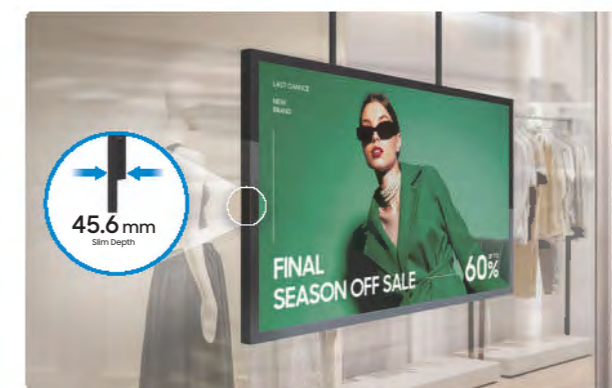
Samsung's Window Signage is optimized for storefront promotions, delivering brilliant picture quality that brings all content to life. High brightness combined with polarized sunglass support ensures optimal visibility, delivering an uncompromised customer viewing experience.

* Resolution and high-brightness specification may vary by model.



Durable Performance

With IP5X-validated dust protection and em-bedded proprietary functionality that mitigates overheating, Samsung's Window Signage continuously provides robust durability. This ensures optimized operation in a variety of outdoor conditions for consistent performance.



Slim Depth*

The slim design allows Window Signage to blend naturally into storefront environments, minimizing visual clutter and preserving valuable space. In particular, the 32-inch model features a compact depth of 45.6mm, enabling a clean and unobtrusive window-facing installation.

* The thickness may vary by size.

Stretched Signage

SHC

Samsung's Stretched Signage offers a versatile signage solution to meet any need, delivering impactful content while maximizing space efficiency.

Highlights

- 16:4.5 Stretched Ratio
- 700 nits Brightness
- Anti-glare
- 24/7 Operation
- Embedded Media Player
- Vertical Installation



Maximize Space and Optimize Content

Versatility and cost effectiveness are necessities in digital signage. Samsung's SHC series, featuring a 16:4.5 wide screen stretched display format, offers the ability to effectively communicate information in small, narrow spaces.



Make Messages Easier to See with 700-nit Brightness

With brightness levels up to 700 nits, these displays maintain clear, vibrant content visibility in high-ambient-light environments. Customers can easily read messages and see product details from any angle.



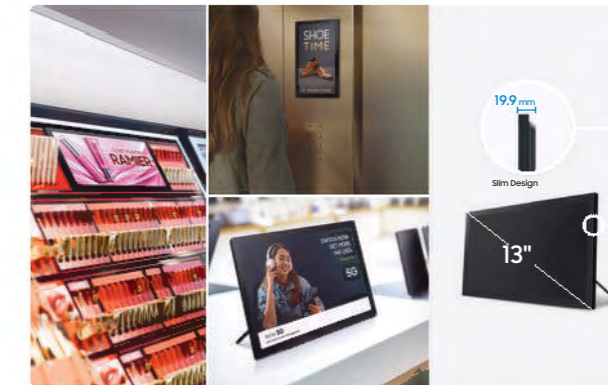
Communicate Even in Vertical Format

Vertical displays capture customer attention and fit naturally into narrow spaces where traditional horizontal signage won't work. This flexibility allows you to deliver your message in more locations and environments.

Small Signage

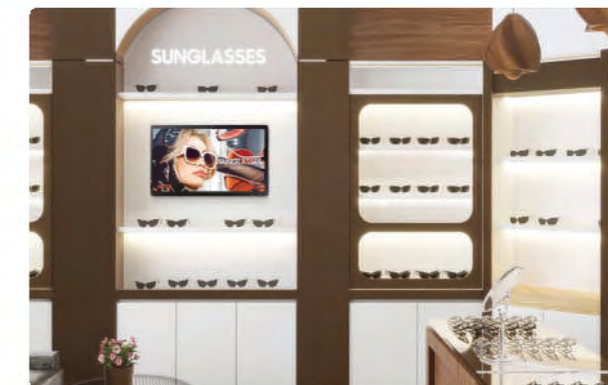
13", 24" QBC

Samsung Small Signage enables clear and focused communication in space-constrained environments through its compact and versatile design. Optimized for close-range viewing, it delivers information effectively where larger displays are impractical, offering a flexible solution for a wide range of business needs.



Compact 13-inch Size & Slim Design

The 13-inch Small Signage features a slim 19.9mm profile, fitting easily into tight spaces where larger displays are impractical. Its compact design simplifies installation and content management, making it ideal for customer-facing areas where information needs to be delivered up close.



Hold Sizable Opportunities in Small Spaces

Small Signage is designed for efficient use in space-constrained environments. A sleek rear design makes the display optimal for wall mounting while the connectivity, content play and device controls are easy to operate.



Dual Wi-Fi (2.4GHz + 5GHz)

Samsung's QBC series now supports dual-band Wi-Fi with both 2.4GHz and 5GHz frequencies, enabling faster network connections and higher data transmission speeds—especially in high-traffic areas.

Highlights

- Compact Size (13-inch, 24-inch)
- Home UI
- Dual Wi-Fi (2.4GHz + 5GHz)
- Samsung VXT





Business TV

- BEFX-H
- BEFX-M
- BEFX-B

Samsung's Business TV is the ideal display solution for small businesses, replacing outdated physical paper signs and posters. Whether used for menu boards or advertisements, Business TV provides flexible functionality suited to a wide range of retail stores and businesses looking to do more with their TV.

Highlights

- Samsung Business TV App
- Samsung VXT
- PlayLock *
- Tizen Zero Config*

* The feature's availability may vary by region.



Do More with Your TV

Communicate with your customers without the need for physical paper materials. The simple, ready-to-use Business TV app allows you to showcase advertising content alongside TV programming.



Samsung Business TV App

Available on Android or iOS mobile devices, the Samsung Business TV app allows users to remotely manage, schedule and display customized content effortlessly. Additionally, users can easily create eye-catching content using a variety of ready-to-use content templates.

* Images simulated for illustrative purposes. Actual UI may differ and is subject to change without notice.



PlayLock

Lock your TV with a pin-code system*, preventing unauthorized access and tampering with the screen. This minimizes the risk of accidental misuse, while ensuring that only the content you have selected is played.

* The feature's availability may vary by region.



LED Signage

Expand your business vision without limits. Samsung LED Signage effectively captures customer attention with brilliant visuals, even on large-scale displays. Available in a variety of sizes and shapes, these displays allow for unlimited creative possibilities.

- 36 The Wall
- 40 Onyx
- 42 Indoor LED
- 44 High Brightness LED
- 46 All-in-One LED



The Wall

MPF MMF

Samsung The Wall is an industry-leading display solution delivering never-before-seen visual experiences. Backed by decades of Samsung's rich R&D heritage and LED technology expertise, The Wall delivers the deepest blacks and pristine colors.

Highlights

- Black Seal Technology
- PANTONE Validated
- 20bit Processing
- Linear Grayscale
- MICRO HDR
- NQM AI Gen2 Processor
- One-Body Design
- Simple Structure
- TUV Eye Comfort
- EMC Class B
- Multi View
- 8K S-BOX
- Stand-by-Mode



The Essence of Black

Black Seal Technology creates a uniform, seamless canvas for deeper black levels and enhanced depth. This delivers unparalleled contrast and superior detail for purer image reproduction.

* Black Seal Technology vary by models.



Superior Color Purity

Viewers can experience fully authentic, accurate color validated by PANTONE. As a trusted symbol of color fidelity by industry experts, PANTONE Validated confirms the accurate reproduction of 2,140 PANTONE colors and 110 newly added skin tone shades for superior color accuracy.

* PANTONE certified based on HDR screen.
* PANTONE Validated feature may vary by models.



Instant AI Optimization

Every second of content is instantly analyzed and optimized for enhanced picture quality. The NQM AI Gen2 processor delivers vivid visuals at any size up to 8K resolution, enhancing contrast and removing noise.

* AI Processor may vary by models.



The Wall for Virtual Production

IVC

Samsung The Wall for Virtual Production transforms the entire workflow of virtual production, supporting an industry top level 12,288 Hz refresh rate as well as genlock and phase offset.

Highlights

- Black Seal technology
- Ultra Chroma technology
- 20bit processing
- Linear grayscale
- 12,288 Hz high refresh rate
- Genlock & Phase offset
- Virtual Production Manager
- Advanced installation
 - Max 5800R concave support, Hanging / Stacking



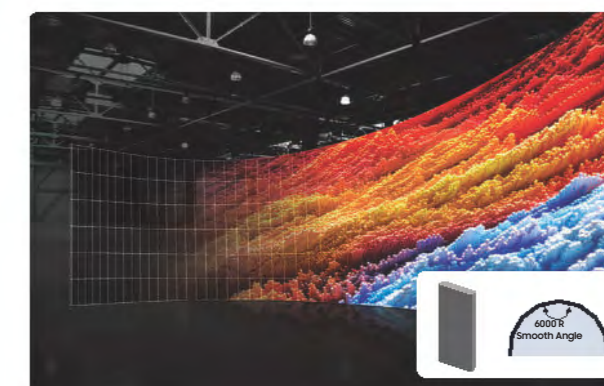
Minimize flickers and artefacts

By supporting an industry top level 12,288 Hz refresh rate, The Wall for Virtual Production minimizes flicker lines and artefacts when shooting the image on display through a camera.



Perfect frame synchronization

The Wall for Virtual Production allows to genlock all the signals of the entire system, ensuring a perfect synchronization. It also offers a phase offset function for further frame corrections.



Flawless curved installation

The Wall for Virtual Production improved its cabinet structure to be half-width in 4:9 ratio, allowing better curved installation with perfectly smooth angle.

Onyx Cinema LED

ICD (5m / 10m / 14m)

Samsung Onyx is the world's first cinema LED display, delivering exceptional image quality with true black levels and vivid color accuracy. Designed for professional cinema, Onyx sets a new standard for cinema displays with superior contrast and color fidelity.

Highlights

- True Black Presentation
- Vivid Color Expression
- HDR Support
- Flawless images
- Flexible Media Server Options
- Expanding sweet spot
- True power of 3D
- Alternative Content Play
- Scalable Size: P1.2 (5-9m) / P2.5 (10-14m) / P3.3 (14-20m)

* HDR supported by using DCI-HDR compatible IMBs.



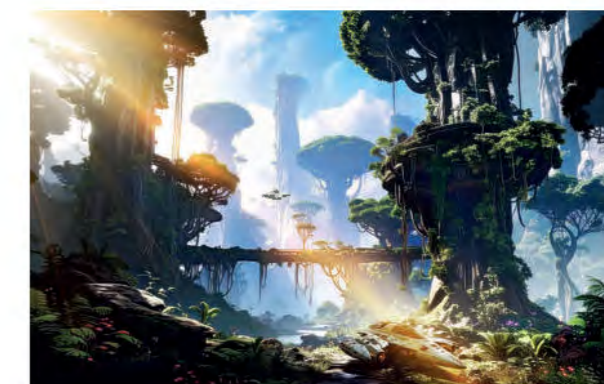
True Black Levels

With self-emitting LED technology, Onyx delivers true black levels that enhance contrast and depth perception. This creates a more immersive viewing experience, particularly in darker scenes where precise black reproduction is critical.



Rich Color Accuracy

With a wide color gamut and enhanced saturation, Onyx delivers rich, vibrant colors across all content types. This ensures consistent, accurate color representation—particularly important for animated content and films with complex color palettes.



HDR Technology

Powered by Samsung's HDR technology, Onyx reaches peak brightness levels of 300 nits, balancing bright and dark elements precisely to deliver clear detail across the full tonal range. Highlights remain vivid without blooming, and shadow details stay visible without losing contrast—ensuring accurate HDR content reproduction.



Indoor LED

IFR IEA IEF

Samsung's Indoor LED signage delivers exceptional picture quality and customizable configurations to fit specific space requirements, creating engaging visual experiences for customers.

Highlights

- Brilliant Visuals
- HDR10/10+ Support
- 4K AI Upscaling
- NQM AI Processor
- GoB Technology
- Thin & Light Design
- Flexible Installation
- LED Signage Manager 2
- Signage Setup Assistant
- Samsung VXT

* Some features may vary by models.



Best-in-Class LED Picture Quality

Samsung's Indoor LED signage uses LED HDR technology to optimize brightness and contrast while preventing glare. This ensures accurate color presentation and sharp detail across all content types, without requiring additional metadata.



Reliable Protection, Lasting Clarity

GoB (Glue on Board) technology adds a protective layer to the LED surface, helping guard against water droplets, electrical shock, or physical impact. The reinforced surface improves handling during installation and supports long-term performance.



Flexible Installation for Various Locations

Advanced design provides flexibility for any indoor retail or business environment. Supporting portrait and landscape orientations—and even curved, L-shaped and ceiling installations—businesses have added control to create the ideal display for their space.



High Brightness LED

ISC IHC IBF

Samsung's ISC, IHC, IBF series high brightness LED displays create a brilliant centerpiece in various environments. Featuring 2,000-4,000nit brightness and 3,840Hz refresh rate, these displays captivate spectators with immersive visuals on bright large-scale installations.

Highlights

- High Brightness
- Brilliant Visuals
- Thin & Light Design
- Clean-Back Design
- GoB Technology
- Flexible Installation
- Full Front & Rear Service
- FlexFit Module
- Improved Energy Efficiency
- LED Signage Manager 2
- Samsung VXT

* Some features may vary by models.



Crystal-clear Visuals, Even in Direct Sunlight

Capture attention with vivid visuals that remain clear in bright conditions. High-brightness technology delivers consistent content visibility, even in direct sunlight, maximizing customer engagement.



Clean Aesthetics for Modern Spaces

The simplified rear panel reduces visual clutter, helping the signage integrate seamlessly into modern interiors. The result is a display that looks refined from front to back, even in open or window-facing spaces.



Seamless LED Signage Operations

LED Signage Manager 2 (LSM2) streamlines installation and operation by configuring cabinet layouts, adjusting color settings and fine-tuning display parameters. With built-in monitoring and firmware management, it ensures stable and consistent signage performance.

* LSM2 is supported on Tizen 8.0 and above on S-BOX/All-in-One. Earlier Tizen versions support LSM.
* Availability may vary by LSM or LSM2.



All-in-One LED

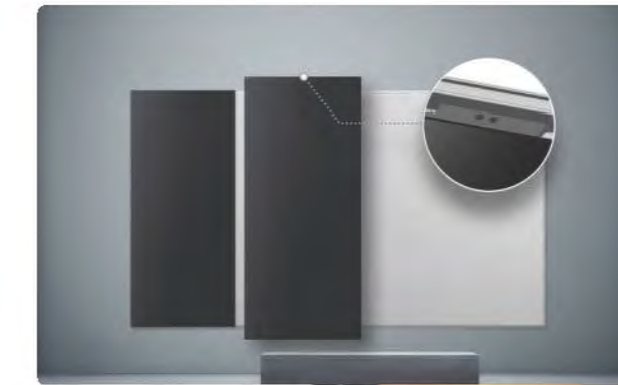
110", 146" IAB 130" IAC 108", 136" MMF-A

Samsung's All-in-One LED display enables a significantly simplified installation. With Samsung's exclusive Quick Build technology, it only takes a few hours to install a large-scale display.

Highlights

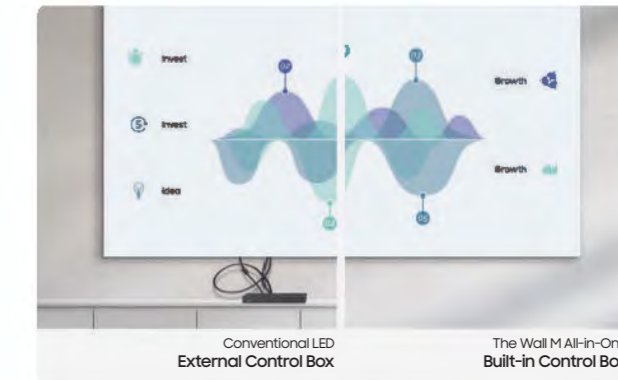
- True Black Presentation
- MICRO HDR
- NQM AI Processor
- 20bit Processing
- Linear Grayscale
- Quick Build
- Built-in Control Box
- All-inclusive Components
- Multi-Screen Connection
- TUV Eye Comfort

* Some features may vary by models.



Quick Install. Big Impact.

Dock the two background plates and hang just four preset modules for a complete installation. With Samsung's Quick Build structure, large-scale displays can be fully installed in just a few hours, reducing setup time and labor costs.



Auto Configuration Setup

Samsung's All-in-One LED display integrates the control box into the display itself, eliminating a cumbersome configuration process and enabling faster deployment.



No Extra Peripherals Needed

All components needed for operation are included in one package—control box, wall brackets, speakers, and decorative bezels—eliminating the need for additional purchases.

Hospitality TV

Enhance the guest experience with Samsung Hospitality TVs. Leveraging our expertise in TV technology, these hospitality displays are optimized for hotel environments, offering guests a comfortable and familiar viewing experience while providing hotel managers with efficient control and management.

- 50 The Frame
- 52 Crystal UHD
- 54 Full HD





The Frame

HL03H

The Frame for hotel is a hospitality display that brings stunning 4K QLED picture quality with vivid colors, deep contrasts and lifelike visuals to guest rooms. Its sleek and sophisticated design transforms interiors while maintaining a refined aesthetic. The Frame allows hotel managers to customize rooms by displaying a curated selection of modern or classic artwork.

* The Frame for Hotel is planned to be launched in Q3 2026.

Highlights

- Modern Frame Design
- Generative Wallpaper
- Artful Picture Quality with QLED
- Glare Free
- LYNK Cloud
- Google Cast
- Apple AirPlay
- Samsung Knox Security
- NQ4 AI Gen2 Processor
- Live Translate

* Feature of HL03H is planned for a future update.



Modern Frame Design

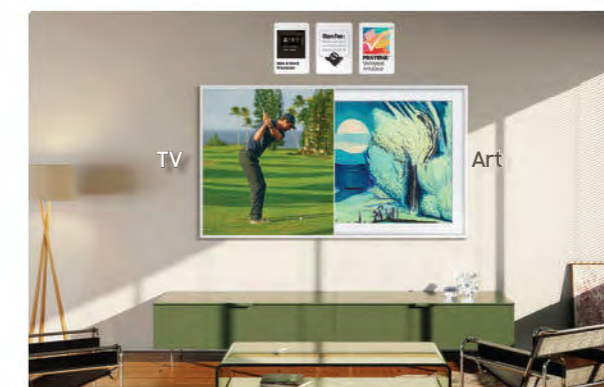
Designed with a slim picture frame aesthetic, The Frame features an elegantly minimal and modern design that blends beautifully into guest room décor.



Built-in One Connect Box

With flexibility and a compact design, enjoy a cleaner setup to elevate your space. The built-in One Connect Box simplifies installation and creates a clutter-free setup to elevate the room aesthetics.

* TV requires a separate power cable connection.



Artful Picture Quality with QLED

Stunning visuals for art and entertainment alike. Using Samsung's sophisticated display technology, The Frame produces a vibrant image with a wide range of colors and high brightness levels, so viewers can watch TV with exceptional QLED picture quality.



Crystal UHD

- HU8000F
- HU7010F
- HU7000F
- HU6000F

Samsung Crystal UHD hospitality displays gives your guests the feeling of home, offering clear visuals and convenient access to their favorite content for instant comfort.

* HU7010F series is launched in North America and India region only.

Highlights

- LYNK Cloud
- Google Cast™
- Apple AirPlay
- Tizen Enterprise Platform
- Samsung TV Plus
- Samsung Knox Security
- AirSlim Design
- Swivel Stand
- Crystal Processor 4K
- 4K Upscaling

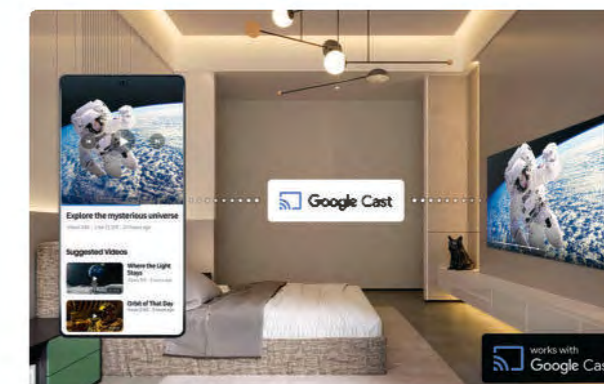
* Some features may vary by models.
 * Samsung TV Plus certain region only.
 * Samsung Knox Security applies to Samsung TVs powered by Tizen, launched since 2015. Latest software update is required.



LYNK Cloud: An Integrated Cloud Platform

Empower managers with a powerful set of tools to enhance the guest experience. LYNK Cloud provides remote display management and can even analyze guests' content use to uncover marketing insights, helping managers deliver optimized promotions.

* Samsung LYNK Cloud solution must be purchased separately.
 * UI may vary by models or hotel's current platforms.



Google Cast™: Instant In-room Entertainment

With Google Cast™, guests can easily cast their favorite content directly from their Android™ and iOS devices to the TV without the need for additional dongles or login requirements. The connection process is quick and straightforward, utilizing QR codes for instant pairing.

* The features are available through Samsung solution. (LYNK Cloud, Tizen Enterprise Platform)
 * Android™ and Google Cast™ are trademarks of Google LLC.
 * Google Cast™ supports Android™ 6 and above, and iOS 14 and above. Availability may vary by device, software version and region.



Apple AirPlay: Simple and Secure Streaming

Guests can enjoy movies, shows, photos and more on the TV in their room with AirPlay or Smart View. Devices are securely paired to the TV, ensuring peace of mind that everything stays personal and private.

* When using Tizen Enterprise Platform, in order to enable AirPlay, all related parties including hotel property and system integrator must be certified by Apple separately.
 * AirPlay in hotels requires iPhone Xs or later running iOS 17.3 or later, or iPad (6th generation or later), iPad mini (5th generation or later), iPad Air (3rd generation or later), 12.9-inch iPad Pro (2nd generation or later), 10.5-inch iPad Pro, or 11-inch iPad Pro (1st generation or later) running iPadOS 17.3 or later.
 * This function may not be supported depending on the model, apps, or geographical area.



Full HD for small spaces

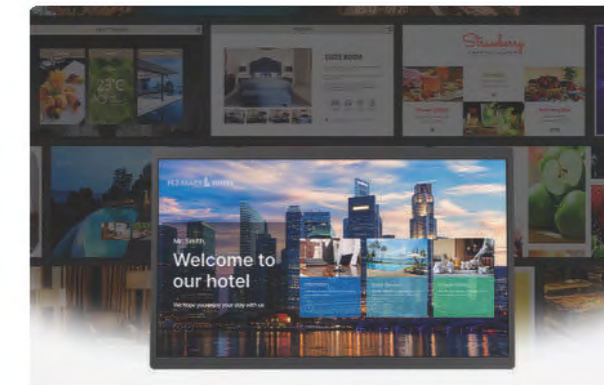
HF8000F

Samsung's HF8000F series is a compact display that fits flawlessly in tight spaces while maintaining the same reliable performance hospitality businesses demand, making it a smart choice for any space. It features Tizen OS and LYNK Cloud for seamless management while also providing effortless casting options with Google Cast™ and Apple AirPlay to create a unique experience for each guest.

Highlights

- Compact Design
- LYNK Cloud
- Google Cast™
- Apple AirPlay
- Tizen Enterprise Platform
- Samsung Knox Security
- Multi-Code Remote
- Samsung TV Plus
- Smart Hub
- SmartThings Pro

* Content services and recommendation may vary by regions & models.
* Agreement of the Smart Hub Terms and Conditions and Privacy Policy is required before use.



Tizen Enterprise Platform

Samsung's Tizen Enterprise Platform (TEP) provides an integrated service infrastructure and a flexible application development environment. Within Tizen OS, applications can be easily customized to meet specific business needs, while the system ensures enhanced software management for operation.



Compact Design, Greater Flexibility

The compact display fits seamlessly in tight spaces, allowing hotel managers to optimize room layouts without hindering performance. Its compact design packs the same reliable performance hospitality demand, making it a smart choice for small space.



Your Privacy. Secured.

Samsung Knox Security secures TVs by blocking unauthorized, malicious apps or access to phishing sites while securing connected IoT devices. It protects guests' sensitive data like PINs and passwords through multiple layers of software and hardware.

* Samsung Knox Security applies to Samsung TVs powered by Tizen, launched since 2015. Latest software update is required.



Solution

Optimize your business operations with Samsung's comprehensive display solutions. Seamlessly integrate and control multiple devices and systems to enhance operational efficiency and overall performance across various business environments.

58 Samsung VXT
60 LYNK Cloud

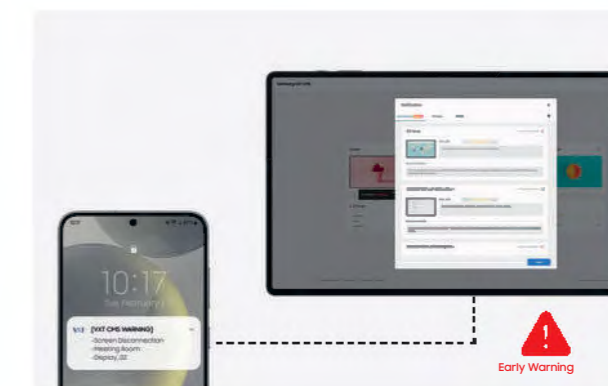
Samsung VXT

Samsung VXT* is a cloud-based solution for digital signage, bringing intuitive content management and remote display management together in one secure platform.



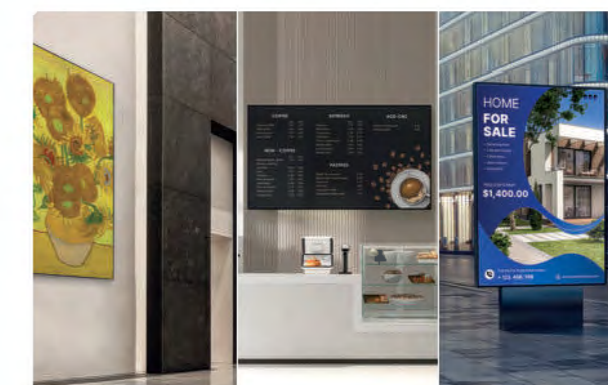
AI-Powered Features (AI Studio)

AI Studio makes video creation simple—just upload images and write a prompt to generate video content. Embedded within Samsung VXT, this AI-powered tool converts images into dynamic, helping businesses create engaging content quickly while reducing production complexity.



Remote Control in Real Time, Every Time

Samsung VXT features intuitive remote monitoring, strong security controls, and issue detection for stable content playback. Alerts are sent via email and mobile app push notifications. It also supports tag-based screen and content access permissions for efficient management.



Vertical-Specific Custom Options

VXT Apps enables users to easily discover, install, and utilize extra solutions tailored to their specific needs. Explore the diverse features of VXT CMS alongside Apps optimized for your specific business scenarios.

Highlights

- Free Templates for Various Verticals
- Sync Play & Screen Wall
- Live Touch
- Security Management
- Advanced Tag Management
- Early Warning & Energy Management
- VXT Assistant (Chatbot) & Live chat
- Dynamic Content based on events
- Tag-Bound Role
- VXT Apps
 - VXT Art, AI Studio, Data Sync, Custom Integration, etc.

* Each feature's availability may vary by Samsung VXT's subscription plan. For more information about Samsung VXT, please visit vxt.samsung.com





LYNK Cloud

Samsung LYNK Cloud* is a comprehensive hospitality cloud solution. More than a powerful content and device management system, LYNK Cloud can analyze guests' content use to uncover marketing insights.

* LYNK Cloud License must be purchased separately.

Highlights

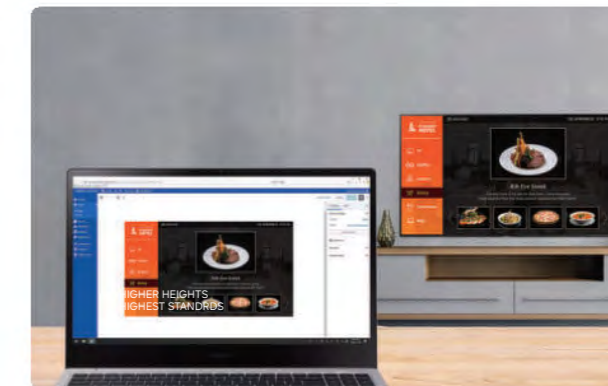
- Device Status Monitoring
- Multi-site Monitoring
- Remote Firmware Updates
- Remote Device Setting Change
- Automatic Credential Removal
- Real-time Message Sending
- Web-standard Content Creation
- Custom Preview Support
- Interactive Service Support
- TV and Service Usage Analysis
- User Flow Analysis



Streamlined Property Management

With online access that supports multiple users, Samsung LYNK Cloud is ideal for global hospitality operations with centralized management, giving operators control of their hotel displays worldwide.

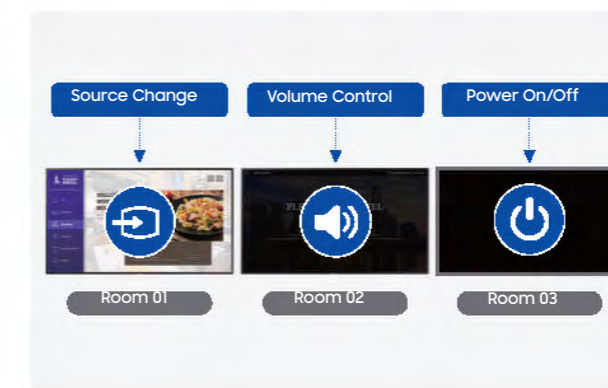
* LYNK Cloud is not available in China.



Content Creation and Custom Interactions

Curate your hotel's in-room experience with LYNK Cloud. Create and remotely deploy web-based content to each in-room TV tailored to your property's brand. With interactive request support, you can provide the easiest way for guests to make room service orders and book spa appointments directly from their TV.

* Some features may not be compatible with hotel's current platforms.



Integrated Device Management

Quickly update in-room TVs from a centralized source with Samsung LYNK Cloud. Managers can modify channel maps and program guides and control basic functions, making it easier than ever to provide support and maintenance.

Specifications

Smart Signage

Spatial Signage

Model	Screen Size	Resolution	Brightness	Contrast Ratio	Operation Hour	Connectivity	Platform
SMHX	85"	2,160 x 3,840 (9:16)	500 nit	4,000:1	24/7	- In: DP 1.2 (1), HDMI 2.0 (3), USB 2.0 x 2 - Out: Stereo Mini Jack - Ext: RS232C (In/Out), RJ45	Tizen 7.0

Color E-Paper

Model	Screen Size	Resolution	Battery	Display Colors	Operation Hour	Connectivity	Platform	IP rating
EMDX-A	32"	2,560 x 1,440 (16:9)	4,600mAh Li-ion (Pre-installed)	77K* * Based on internal testing. Results may vary depending on test environments and/or standards.	24/7	- In: USB-C 2.0 (Data), USB-C (Power) * RJ45 to USB-C PoE+ Dongle Compatible (Not included in the sales package)	Tizen 8.0	IP5X
EMDX	13"	1,600 x 1,200 (4:3)	4,600mAh Li-ion (Pre-installed)	77K* * Based on internal testing. Results may vary depending on test environments and/or standards.	24/7	- In: USB-C 2.0 (Data), USB-C (Power) * RJ45 to USB-C PoE+ Dongle Compatible (Not included in the sales package)	Tizen 8.0	IP5X

Supersized Signage

Model	Screen Size	Resolution	Brightness	Contrast Ratio	Operation Hour	Connectivity	Platform
QHFX	115"	3,840 x 2,160	1,000 nit	5,500:1	24/7	- In: HDMI 2.1 (3), DP 1.4 (1), USB 2.0 (2) - Out: Stereo Mini Jack - Ext: RS232C (In/Out), RJ45	Tizen 8.0
QPDX-5K	105"	5,120 x 2,160	500 nit	4,000:1	24/7	- In: HDMI 2.1 (3), DP 1.4 (1), USB-C, OPS*, Type-A (2), Type-C (1) - Out: Stereo Mini Jack - Ext: RS232C (In/Out), RJ45	Tizen 8.0
QHC	98"	3,840 x 2,160	700 nit	5,500:1	24/7	- In: HDMI 2.0 (3), DP 1.2 (1), USB 2.0 (2) - Out: Stereo Mini Jack - Ext: RS232C (In/Out), RJ45	Tizen 7.0
QMC	98"	3,840 x 2,160	500 nit	5,500:1	24/7	- In: HDMI 2.0 (3), DP 1.2 (1), USB 2.0 (2) - Out: Stereo Mini Jack - Ext: RS232C (In/Out), RJ45	Tizen 7.0

Smart Signage

UHD Signage

Model	Screen Size	Resolution	Brightness	Contrast Ratio	Operation Hour	Connectivity	Platform
QHC	43", 50", 55", 65", 75"	3,840 x 2,160	700 nit	4,000:1	24/7	- In: HDMI 2.0 (3), DP 1.2 (1), USB 2.0 (2) - Out: Stereo Mini Jack - Ext: RS232C (In/Out), RJ45	Tizen 7.0
QMC	43", 50", 55", 65", 75", 85"	3,840 x 2,160	500 nit	4,000:1	24/7	- In: HDMI 2.0 (3), DP 1.2 (1), USB 2.0 (2) - Out: Stereo Mini Jack - Ext: RS232C (In/Out), RJ45	Tizen 7.0
QBC	43", 50", 55", 65", 75", 85"	3,840 x 2,160	350 nit	4,000:1	16/7	- In: HDMI 2.0 (3), USB 2.0 (2) - Out: Stereo Mini Jack - Ext: RS232C (In/Out), RJ45	Tizen 7.0

Video Wall

Model	Screen Size	Resolution	Brightness	Contrast Ratio	Operation Hour	Connectivity	B-to-B	Bezel Width
VHC-R/VMC-R	55"	1,920 x 1,080	700 nit (VHC-R) 500 nit (VMC-R)	1,100:1	24/7	- In: DVI (1), DP 1.2 (1), HDMI 2.0 (2), Stereo Mini Jack, USB 2.0 (F/W Upgrade) - Out: DP 1.2 (Loop-out), Stereo Mini Jack - Ext: RS232C (In/Out), IR (In/Out), RJ45 (In)	0.88mm	0.44mm (Even)
VHC-E/VMC-E	55"	1,920 x 1,080	700 nit (VHC-E) 500 nit (VMC-E)	1,000:1	24/7	- In: DVI (1), DP 1.2 (1), HDMI 2.0 (2), Stereo Mini Jack, USB 2.0 (F/W Upgrade) - Out: DP 1.2 (Loop-out), Stereo Mini Jack - Ext: RS232C (In/Out), IR (In/Out), RJ45 (In)	1.74mm	1.3mm (U/L) 0.44mm (R/B)
VMB-U	46", 55"	1,920 x 1,080	500 nit	1,200:1	24/7	- In: DVI (1), DP 1.2 (1), HDMI 2.0 (2), Stereo Mini Jack, USB 2.0 (F/W Upgrade) - Out: DP 1.2 (Loop-out), Stereo Mini Jack - Ext: RS232C (In/Out), IR (In/Out), RJ45 (In)	3.5mm	2.25mm (U/L) 1.25mm (R/B)

Interactive Display

Model	Screen Size	Resolution	Brightness	Contrast Ratio	Operation Hour	Connectivity	OS	Touch Type
WAFX-P	65", 75", 86"	3,840 x 2,160	450 nit	1,200:1	12/7	- In: HDMI 3 (Rear 2, Front 1) USB C (Front), OPS, DP, 1 (Stereo Mini Jack), 5 (2.0 x 3, 3.0 x 2) - Out: HDMI Out (Rear), 1 (Stereo Mini Jack), Touch Out 2 (Front 1, Rear 1) - Ext: Touch Input, RS232C In, RJ45 In/Out	Android 15	IR
WAF	65", 75", 86"	3,840 x 2,160	400 nit	1,200:1	12/7	- In: HDMI 2 (Rear 1, Front 1), USB C (Front), OPS, 1 (Stereo Mini Jack), 4 (2.0 x 2, 3.0 x 2) - Out: HDMI Out (Rear), 1 (Stereo Mini Jack), Touch Out 2 (Front 1, Rear 1) - Ext: Touch Input RS232C In, RJ45 In	Android 14	IR
WEFX	65", 75", 86"	3,840 x 2,160	350 nit	1,200:1	12/7	- In: HDMI 3 (Rear 2, Front 1), USB-C 2 (Front1, Rear1), OPS, 1 (Stereo Mini Jack), 7 (3.0 x 4, 2.0 x 1, USB-C x 2) - Out: 1 (Stereo Mini Jack), Touch Out 2 (Front 1, Rear 1) - Ext: Touch Input, RS232C In	OS-Free	IR

Specifications

Smart Signage

Samsung Flip

Model	Screen Size	Resolution	Brightness	Contrast Ratio	Operation Hour	Connectivity	Platform	Touch Type
WMFX	65", 75", 86"	3,840 x 2,160	450 nit	4,000:1	12/7	- In: HDMI 1, (With Tray) HDMI 1, USB-C, USB 1 (With Tray) USB 1, USB External (In/Out pair) 1 - Out: HDMI 1, 1 (Stereo Mini Jack), Touch Out 1 (USB Upstream Type), (With Tray) Touch Out 1 - Ext: Touch Input, RS232C thru stereo jack, RJ45 (For MDC)	Tizen 9.0	IR

Touch Signage

Model	Screen Size	Resolution	Brightness	Contrast Ratio	Operation Hour	Connectivity	Platform	Touch type
QMB-T	43", 55"	3,840 x 2,160	500 nit (w/o glass)	4,000:1 (w/o glass)	24/7	- In: DP1.2 (1), HDMI2.0 (3), USB (2) - Out: Stereo Mini Jack, Touch Out - Ext: RS232C (In/Out), RJ45	Tizen 6.5	Capacitive
QMC-T	32"	1,920 x 1,080	300 nit (with Touch glass), 400 nit (without Touch Glass)	4,000:1 (w/o glass)	16/7	- In: HDMI 2.0 (3), USB 2.0 x 2 - Out: Stereo Mini Jack, Touch Out - Ext: RS232C (In/Out), RJ45	Tizen 7.0	Capacitive
QBC-T	13"	1,920 x 1,080	500 nit (w/o glass)	800:1 (w/o glass)	16/7	- In: HDMI 1.4 (1), USB 2.0 (1, Type-C) for Data transfer dedicated - Out: Stereo Mini Jack, Touch Out - Ext: RS232C (In), RJ45	Tizen 7.0	Capacitive
	24"	1,920 x 1,080	250 nit (w/o glass)	1,000:1 (w/o glass)	16/7	- In: HDMI 1.4 (1), USB 2.0(1) - Out: Stereo Mini Jack, Touch Out (Type-B) - Ext: RS232C(In), RJ45(In), IR(In)	Tizen 7.0	Capacitive

Outdoor Signage

Model	Screen Size	Resolution	Brightness	Contrast Ratio	Operation Hour	Connectivity	Platform	IP Rating
OHA	75"	3,840 x 2,160	3,500 nit (peak 4,000 nit)	1,200:1	24/7	- In: DP 1.2 (1), HDMI 2.0 (2), USB 2.0 (1) - Out: Stereo Mini Jack - Ext: RS232C (In), RJ45 (In)	Tizen 5.0	IP56
OHDX	46", 55"	1,920 x 1,080	3,500 nit (peak 4,000 nit)	6,000:1	24/7	- In: HDMI 2.0 (2), HDBaseT (LAN Common), HDCP 2.2 HDCP 2.2, USB (2) - Out: Stereo Mini Jack - Ext: RS232C (In/Out), RJ45 (In/Out), HDBaseT	Tizen 8.0	IP56
OHB	24"	1,920 x 1,080	1,500 nit	1,000:1	24/7	- In: HDMI 2.0 (1), USB 2.0 (2) - Out: Stereo Mini Jack - Ext: RS232C (In), RJ45 (In)	Tizen 6.5	IP66

Smart Signage

Window Signage

Model	Screen Size	Resolution	Brightness	Contrast Ratio	Operation Hour	Connectivity	Platform	IP Rating
OMA	75"	3,840 x 2,160	4,000:1 (w/o glass)	1,200:1	24/7	- In: DP 1.2 (1), HDMI 2.0 (2), USB 2.0 (1) - Out: HDMI 2.0, Stereo Mini Jack - Ext: RS232C (In/Out), RJ45 (In)	Tizen 5.0	IP5X
OMB	46", 55"	1,920 x 1,080 (46") 3,840 x 2,160 (55")	4,000 nit (46") 3,000 nit (55")	6,000:1 (46") 1,200:1 (55")	24/7	- In: HDMI 2.0 (2), USB 2.0 (1) - Out: HDMI 2.0 (1), Stereo Mini Jack - Ext: RS232C (In/Out), RJ45 (In/Out)	Tizen 5.0	IP5X
OMN, OMN-D	55"	1,920 x 1,080	4,000 nit 3,000/1,000 nit (-D)	6,000:1	24/7	- In: DP 1.2 (1), HDMI 2.0 (2), USB2.0 (1) / (-D) HDMI 2.0 (2), USB 2.0 (2) - Out: HDMI 2.0 (1), Stereo Mini Jack / (-D) N/A - Ext: RS232C (In/Out), RJ45 (In/Out) / (-D) RS232C (In), RJ45 (In)	Tizen 5.0	IP5X
OMDX	32"	1,920 x 1,080	2,000 nit	4,000:1	24/7	- In: HDMI 2.0 (2), HDCP 2.2, USB 2.0 x 1 - Out: Stereo Mini Jack - Ext: RS232C (In/Out), RJ45 (In/Out)	Tizen 8.0	IP5X

Stretched Signage

Model	Screen Size	Resolution	Brightness	Contrast Ratio	Operation Hour	Connectivity	Platform
SHC	37"	1,920 x 540	700 nit	4,000:1	24/7	- In: HDMI2.0 (3), USB (2) - Out: Stereo Mini Jack - Ext: RS232C (In/Out), RJ45, IR (In)	Tizen 7.0

Small Signage

Model	Screen Size	Resolution	Brightness	Contrast Ratio	Operation Hour	Connectivity	Platform
QB13C	13"	1,920 x 1,080	500 nit	800:1	16/7	- In: HDMI 1.4 (1), Type C (USB 2.0)(1) - Out: Stereo Mini Jack - Ext: RS232C (In), RJ45 (In)	Tizen 7.0
QB24C	24"	1,920 x 1,080	250 nit	1,000:1	16/7	- In: HDMI 1.4 (1), USB 2.0 (1) - Out: Stereo Mini Jack - Ext: RS232C (In), RJ45 (In)	Tizen 7.0

Specifications

Smart Signage

Business TV

Model	Screen Size	Resolution	Brightness	Contrast Ratio	Operation Hour	Connectivity	Platform
BEFX-H	43", 50", 55", 65", 75", 85"	3,840 x 2,160	300 nit	N/A	16/7	- In: HDMI x 3, USB x 1 - RF : 1 Terrestrial / 1 Cable / 0 Satellite (EN/XU/C) 1 Terrestrial, 1 Cable, 1 Satellite / (NZ) 1 Terrestrial, 1 Satellite 85"(EN/XU) 1 Terrestrial, 1 Cable, 1 Satellite / (NZ) 1 Terrestrial, 1 Satellite - Ext: RJ45	Tizen 9.0
BED-H	98"	3,840 x 2,160	400 nit	N/A	16/7	- In: HDMI x 3, USB x 2 - RF : 1 Terrestrial / 1 Cable / 0 Satellite (EN/XU) 1 Terrestrial, 1 Cable, 1 Satellite / (NZ) 1 Terrestrial, 1 Satellite - Ext: RJ45	Tizen8.0

LED Signage

The Wall

Model	Pixel Pitch	Diode Type	Brightness (peak)*	Contrast Ratio	Certification	Cabinet size (L x H x D, per cabinet)	Weight (per cabinet)	Service**	IP Rating
MPF	P0.8, P1.2, P1.6	Flip-chip RGB LED	1,800 nit (P0.8, P1.2) 1,600 nit (P1.6)	29,000:1 (P0.8) 41,000:1 (P1.2) 43,000:1 (P1.6)	EMC Class B TUV Eye Comfort Safety 62368-1, 60950-1	806.4 x 453.6 x 49.4 mm	9.2 kg	Front	IP40/20 (Front/Rear)
MMF	P0.9, P1.2, P1.5	Flip-chip RGB LED	600 nit	8,000:1 (P0.9, P1.2) 10,000:1 (P1.5)	EMC Class A TUV Eye Comfort Safety 62368-1, 60950-1	600 x 337.5 x 49.8 mm	5.1 kg	Front	IP40/20 (Front/Rear)
IVC	P1.6, P2.1	Flip-chip RGB LED	1,500 nit	31,000:1 (P1.2) 35,000:1 (P1.6)	EMC Class A Safety 62368-1, 60950-1	403.1 x 907.0 x 83 mm	13.3 kg	Front (Module/Tcon) Rear (Tcon/SMPS)	IP20

* Peak value according to IDMS (Information Display Measurement Standard)
** Front service: Front service to power supply and main board on a cabinet level.

Onyx Cinema LED

Model	Pixel pitch	Diode Type	Brightness (peak)*	Contrast Ratio	Certification	Cabinet size (L x H x D, per cabinet)	Weight (per cabinet)	Service**	IP Rating
ICD 5m	P1.2 (5m) P2.5 (10m) P3.3 (14m)	Surface Mount Device (SMD)	300 nit	∞:1in Dark room	DCI (Digital Cinema Initiatives) EMC Class A Safety 60950-1	640 x 900 x 125 mm	14.1 kg	Rear	IP20

LED Signage

Indoor LED

Model	Pixel pitch	Diode Type	Brightness (peak)*	Contrast Ratio	Certification	Cabinet size (L x H x D, per cabinet)	Weight (per cabinet)	Service**	IP Rating
IFR/IFR-F	P1.5, P2.0, P2.5, P4.0	Surface Mount Device (SMD)	1,600 nit (P1.5, P2.0) 2,000 nit (P2.5) 1,500 nit (P4.0)	12,000:1 (P1.5) 7,200:1 (P2.0) 8,000:1 (P2.5) 8,300:1 (P4.0)	EMC Class A Safety 62368-1, 60950-1	960 x 540 x 79.5 mm (IFR) 240 x 540 x 81 mm (IFR-F)	11.8 kg (IFR P1.5) 12.4 kg (IFR P2.0/P2.5/P4.0) 3.2 kg (IFR-F)	Front	IP20
IFR-V/IFR-VF	P1.5, P2.0, P2.5, P4.0	Surface Mount Device (SMD)	1,600 nit (P1.5, P2.0) 2,000 nit (P2.5) 1,500 nit (P4.0)	12,000:1 (P1.5) 7,200:1 (P2.0) 8,000:1 (P2.5) 8,300:1 (P4.0)	EMC Class A Safety 62368-1, 60950-1	960 x 540 x 79.5 mm (IFR-V) 240 x 540 x 81 mm (IFR-VF)	11.8 kg (IFR P1.5) 12.4 kg (IFR P2.0/P2.5/P4.0) 3.2 kg (IFR-F)	Front	IP20
IEA/IEA-F	P1.5, P2.0, P2.5, P4.0	Surface Mount Device (SMD)	1,000 nit (P1.5, P2.0, P2.5) 800 nit (P4.0)	6,000:1 (P1.5) 7,500:1 (P2.0) 5,000:1 (P2.5, P4.0)	EMC Class A Safety 62368-1, 60950-1	960 x 540 x 79.5 mm (IEA) 240 x 540 x 81 mm (IEA-F)	11.8 kg (IEA P1.5) 12.4 kg (IEA P2.0) 10.8 kg (IEA P2.5, P4.0) 3.2 kg (IEA-F)	Front	IP20
IEF	P1.2	Surface Mount Device (SMD)	600 nit	4,000:1	EMC Class A Safety 62368-1, 60950-1	600.1 x 337.5 x 50.2 mm	5.4 kg	Front	IP40/20 (Front/Rear)

* Peak value according to IDMS (Information Display Measurement Standard)
** Front service: Front service to power supply and main board on a cabinet level.

High Brightness LED

Model	Pixel pitch	Diode Type	Brightness (peak)*	Contrast Ratio	Certification	Cabinet size (L x H x D, per cabinet)	Weight (per cabinet)	Service**	IP Rating
ISC-X/ISC-Y/ISC-L	P3.9, P5.9	Surface Mount Device (SMD)	2,000 nit	6,000:1	EMC Class A	500 x 500 x 64 mm (ISC-X) 500 x 1,000 x 64 mm (ISC-Y) 500 x 500 x 64 mm (ISC-L)	7.9 kg (ISC-X) 12.2 kg (ISC-Y) 6.8 kg (ISC-L)	Front (Module/Tcon) Rear (Tcon/SMPS)	IP50
IHC-X/IHC-Y/IHC-L	P3.9, P5.9	Surface Mount Device (SMD)	4,000 nit	8,000:1	EMC Class A	500 x 500 x 64 mm (IHC-X) 500 x 1,000 x 64 mm (IHC-Y) 500 x 500 x 64 mm (IHC-L)	7.9 kg (IHC-X) 12.2 kg (IHC-Y) 6.8 kg (IHC-L)	Front (Module/Tcon) Rear (Tcon/SMPS)	IP50
IBF/IBF-T/IBF-Q	P2.5	Surface Mount Device (SMD)	3,500 nit	10,000:1	EMC Class A	1,000 x 500 x 42 mm (IBF) 750 x 500 x 42 mm (IBF-T) 250 x 500 x 42 mm (IBF-Q)	13 kg (IBF) 10 kg (IBF-T) 3.7 kg (IBF-Q)	Front	IP30

Specifications

LED Signage

All-in-One LED

Model	Pixel pitch	Diode Type	Brightness (peak)*	Contrast Ratio	Certification	Cabinet size (L x H x D, per cabinet)	Weight (per cabinet)	Service**	IP Rating
IAB 146" 4K	P0.8	Flip-chip RGB LED	1,600 nit	24,000:1	EMC Class A TUV Eye Comfort Safety 62368-1, 60950-1	3,229.5 x 1,818.0 x 49.1 mm	160 kg	Front	IP20
IAB 146" 2K	P1.6		1,400 nit	22,000:1					
IAB 110" 2K	P1.2		1,600 nit	24,000:1					
IAC	P1.5	Surface Mount Device (SMD)	1,000 nit	6,000:1	EMC Class A TUV Eye Comfort Safety 62368-1, 60950-1	2,888.5 x 1,628.5 x 56.2 mm	125 kg	Front	IP20
MMF-A 108" 2K	P1.2	Flip-chip RGB LED	500 nit	8,000:1	EMC Class A TUV Eye Comfort Safety 62368-1, 60950-1	2,408.2 x 1,365.2 x 62.8 mm	80.5 kg	Front	IP40/20 (Front/Rear)
MMF-A 136" 2K	P1.5		500 nit	10,000:1					

Hospitality TV

The Frame

Model	Screen Size	Resolution	Feature	Connectivity
HL03H	43"/55"/65"/75"	3,840 x 2,160	Modern Frame Design, Generative Wall Paper, Artful Picture Quality with QLED, Glare Free, LYNK Cloud, Google Cast, Apple AirPlay, Samsung Knox Security, NQ4 AI Gen2 Processor, Live Translate	Wi-Fi 5, Bluetooth 5.2, 2 x HDMI, 1 x USB-A

* Except North America.

Hospitality TV

Crystal UHD

Model	Screen Size	Resolution	Features	Connectivity
HU8000F	43", 50", 55", 65", 75", 85"	3,840 x 2,160	LYNK Cloud, Tizen Enterprise Platform, Google Cast, Apple AirPlay, Smart Hub, Samsung TV Plus, Multi-Code Remote, SmartThings Pro, Samsung Knox Security, AirSlim Design, Crystal Processor 4K, Dynamic Crystal Color, 4K Upscaling, Motion Xcelerator, HDR, Contrast Enhancer	Wi-Fi 5, Bluetooth 5.2, 3 x HDMI, 2 x USB-A
HU7010F	43", 50", 55", 65", 75"	3,840 x 2,160	LYNK Cloud, Tizen Enterprise Platform, Google Cast, Apple AirPlay, Smart Hub, Samsung TV Plus, Multi-Code Remote, SmartThings Pro, Samsung Knox Security, Swivel Stand*, Crystal Processor 4K, Dynamic Crystal Color, 4K Upscaling, Motion Xcelerator, HDR, Contrast Enhancer	Wi-Fi 5, Bluetooth 5.2, 2 x HDMI, 2 x USB-A
HU7000F	43", 50", 55", 65", 75"	3,840 x 2,160	LYNK Cloud, Tizen Enterprise Platform, Google Cast, Apple AirPlay, Smart Hub, Samsung TV Plus, Multi-Code Remote, SmartThings Pro, Samsung Knox Security Metal Stream Design, Crystal Processor 4K, 4K Upscaling, Motion Xcelerator, HDR	Wi-Fi 5, Bluetooth 5.2, 1 x HDMI, 1 x USB-A
HU6000F	43", 50", 55", 65", 75"	3,840 x 2,160	Crystal Processor 4K, 4K Upscaling, HDR, Motion Xcelerator, Multi-Code Remote, Q-Symphony, OTS Lite, Adaptive Sound, MetalStream Design	Wi-Fi 5, Bluetooth 5.2, 1 x HDMI, 1 x USB-A

* Swivel Stand: US Only - HU7010F : 43", 50", 55"

Full HD for small spaces

Model	Screen Size	Resolution	Features	Connectivity
HF8000F	24", 32**	1,920 x 1,080	Compact Design, LYNK Cloud, Tizen Enterprise Platform, Google Cast, Apple AirPlay, Smart Hub, Samsung TV Plus, Multi-Code Remote, SmartThings Pro, Samsung Knox Security	Wi-Fi 5, Bluetooth 5.2, 2 x HDMI, 1 x USB-A

** A 32" model is planned for a future update.