



# Webex on Display

## Samsung SMART Signage with Cisco Video Conferencing Solution

Future of work. On display.

Collaboration is the foundation for success in today's fast-paced business world. Industry leaders Samsung and Cisco have come together to transform the modern workplace with Webex on Display. The partnership unites Cisco's innovative Webex solution with leading Samsung signage technology, providing a seamless, integrated meeting experience.

A best-in-class solution for any business environment, workstyle, or workspace, Samsung SMART Signage paired with Cisco video conferencing changes the way work gets done. This is the future of work. On display.

### Highlights

- Foster more productive and engaging collaboration in any business setting
- Facilitate smoother video conferencing through crystal-clear audio and detailed picture quality
- Preserve valuable space through single-source solution integration
- Share and source content from multiple connected devices
- Establish and immediately activate desired meeting room settings
- Customize solutions to meet the demands of small- and large-sized spaces

**SAMSUNG**

**Cisco Webex**



## Why Webex on Display?

By aligning its industry-best visual display technologies with Cisco's market-leading video collaboration solutions, Samsung's professional offerings transform the modern meeting space. Today's professionals cannot afford to lose valuable time navigating meeting technology. The Samsung and Cisco solutions eliminate these challenges through a convenient and intuitive operational flow.

Bringing together a comprehensive suite of features that can be tailored for individual business needs, Webex on Display unites Samsung's powerful display technology and Cisco's advanced meeting solution to enable more accessible meetings and more intelligent collaboration.

### Cisco Webex Room Kit Series



### Samsung SMART Signage



*\*Please note that you must purchase Cisco Webex Room Kit Series separately at Cisco.*

# Future of work. On display.

Experience integrated meeting solution

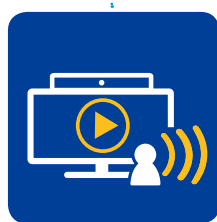


Whether for a small meeting room or a large boardroom, these offerings foster more dynamic and engaging interaction in an easy-to-use format. Videoconferences operate without delay, content appears clearer and discussions become more informed and productive. Each solution stores and activates pre-configured settings, including optimal color, audio and video conditions, without delay. Users experience an optimal 4K viewing experience with the ability to control multiple collaborative solutions through a single remote device. Samsung and Cisco solutions provide customers a variety of options that can be customized for any meeting room environment.

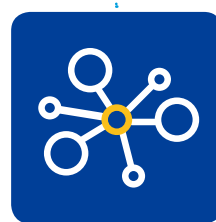
## Cisco Webex



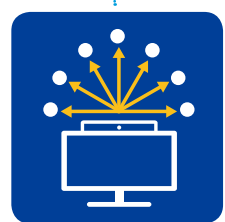
Optimal Viewing Experience



Intelligent Video Conferencing



Smart Operations







Various Lineup

## What is Cisco Webex Room Kit?

The Cisco Webex Room Kit Series is video conferencing technology that combines with flat-panel displays to bring more intelligence and usability to meeting rooms on premises or in the cloud. The Cisco Webex Room Kit Series provides devices for varying sizes of meeting rooms, as described in the table below. They enable smarter meetings with intelligent videos, dual screen options, easy screen integration, and additional capabilities enabled through the cloud.

### Lineup Comparison

		Webex Room Kit Mini	Webex Room Kit	Webex Room Kit Plus	Webex Room Kit Pro
					
<b>Recommended Meeting Room Type</b>		For huddle spaces that seat up to 5 people	For rooms that seat up to 7 people	For rooms that seat up to 14 people	For rooms that seat more than 14 people
<b>Camera</b>	<b>Resolution</b>	4K UltraHD 3840 x 2160p	5K UltraHD 5184x2916p		
	<b>Frame Rate</b>	Up to 60 fps			
	<b>Zoom</b>	2X zoom	3X zoom	5X digital zoom	
	<b>Field of View</b>	120° (Horizontal), 72° (Vertical)	83° (Horizontal), 51.5° (Vertical)		
	<b>Features</b>	Auto framing (face detect), Auto focus, brightness, and white balance	Auto framing (audio + face detect), Auto focus, rightness, and white balance		
<b>Video</b>	<b>Input</b>	1 HDMI 4K 30fps & 1080 60fps		1 HDMI 1080 60fps 2 HDMI 4K 30fps	2 HDMI 1080 60fps 3 HDMI 4K 30fps
	<b>Output</b>	1 HDMI 4K 60fps	2 HDMI 4K 60fps		2 HDMI 4K 60fps 1 HDMI 4K 30fps
<b>Audio / Speakers</b>	<b>Speaker</b>	3 speakers 24W amplifier Max output SPL 84 dB	5 speakers 24W amplifier Max output SPL 86 dB	5 speakers 24W amplifier Max output SPL 90 dB	5 speakers 24W amplifier Max output SPL 90 dB
	<b>Features</b>	Internal microphone, Automatic noise reduction, Active lip synchronization	Internal microphone, Speaker tracking, Automatic noise reduction, Active lip synchronization		Internal microphone, Speaker tracking, Automatic Gain Control, Automatic noise reduction, Active lip synchronization

### Features



#### Smart Meetings

Powerful, integrated cameras deliver intelligent views capabilities, such as automatic framing and speaker tracking



#### Smart Presentations

Features include dual screens, dual content sources, wireless sharing, and 4K content make for effective presentations



#### Smart Integrations

Tracking meeting attendees for resource allocation, automatic screen integration, in-room controls such as light and curtain adjustments



#### Registration Flexibility

Built for both cloud and on-premises deployment, protecting your investment

# What is Samsung UHD Signage?

Samsung's UHD Signage delivers UHD picture quality for an optimal viewing experience in video conferencing. The powerful graphic performance of built-in software creates efficient operations in business environments, and the 3-layer protection by KNOX helps secure important data. Additionally, the PC-less solution allows user to access and edit content through a remote laptop or PC, eliminating the need to bring devices to meeting rooms.

## Lineup Comparison

	QMR	QMN	QBR	QBN
				
Screen Size	43", 49", 55", 65", 75"	43", 49", 55", 65", 75"	43", 49", 55", 65", 75"	43", 49", 55", 65", 75"
Resolution	UHD (3,840 x 2,160)			
Brightness	500 nit	500 nit	350 nit	350 nit
Color Gamut	92% (DCI-P3, CIE 1976)	72%	92% (DCI-P3, CIE 1976)	72%
Haze	Non-glare	Non-glare	Glare	Glare
Operation Hour	24/7	24/7	16/7	16/7
IP5x Rating	Yes	Yes	Yes	Yes
Operating System	SSSP 6	SSSP 6	SSSP 6	SSSP 6
Others	Symmetric design & Clean cable management		Symmetric design & Clean cable management	



### UHD Picture Quality

Showcases content with four times the ultra-realistic detail and clarity of standard alternatives



### Powerful Performance

Business-critical capabilities ranging from secure in-platform application development to remote management



### Data Security

KNOX platform provides rigid 3-layer protection, restricting file and data access to an exclusive user base



### PC-less Solution

Access and edit content from remote laptop using the Remote Workspace connection

# Samsung and Cisco offer Webex on Display for smarter collaboration

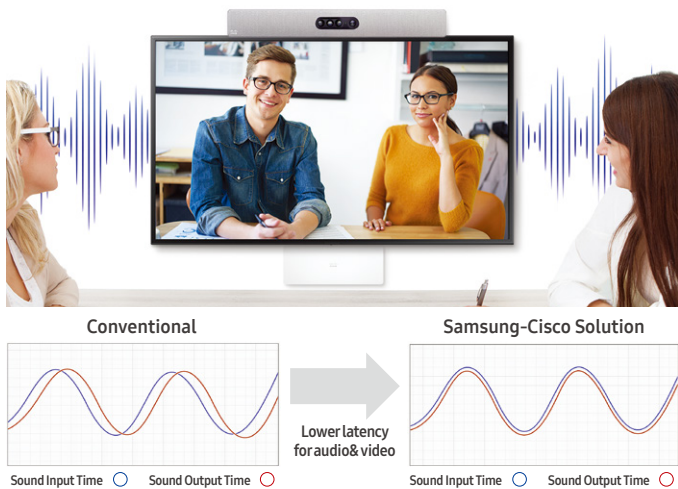
Samsung and Cisco together provide businesses with optimal meeting room solutions to create a highly efficient workspace. As experts in technology and business solutions, Samsung professional displays and Cisco video conferencing provide powerful video conferencing technology and stunning UHD signage for impactful message delivery.

Features are robust and innovative, including Customer Electronics Control (CEC) for streamlined usage, UHD and auto-configured settings for consumer ease and intelligent video conferencing that can be customized for any meeting room.



## Prioritize meeting simplicity

When connected, the Samsung SMART Signage and the Cisco Webex Room Kits are compatible with each other seamlessly through the use of the Consumer Electronics Control (CEC) technology. This technology simplifies the operation of displays by automatically configuring settings.

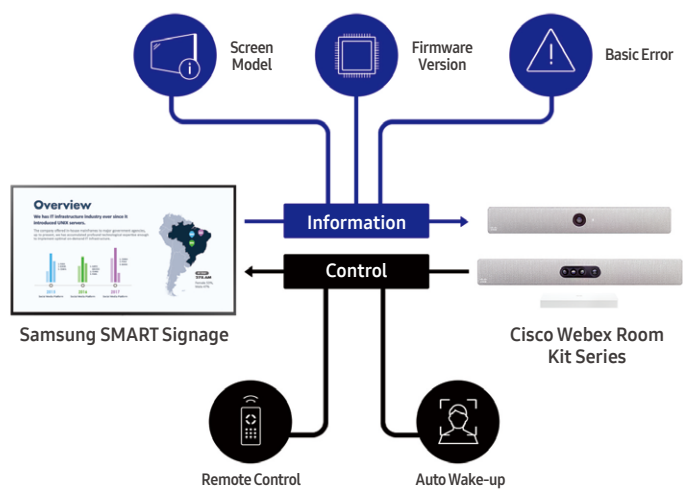


## Intelligent video conferencing

Lag time between video and audio is a common issue in video conferencing. The Samsung and Cisco solutions help to create a smooth video conference experience by automatically going into optimized mode to minimize lag in video playback, eliminate echo and solve lip syncing issues.

## Optimal viewing experience for meetings

The Samsung and Cisco solutions deliver superior color settings that are auto configured for optimal resolution. This offering supports 4K visuals for a high-quality viewing experience and the under and over- scan handling automatically adjusts the screen to ensure a perfect fit.



## Smart operation of displays

The solutions facilitate smart operations by using a mutual connection. The Samsung display information is synced with the Cisco codec, allowing users to manage the displays efficiently. Additionally, the Cisco cameras can recognize attendees entering the room and wake the display automatically.

# Choose the solution that's right for your meeting room

Every office space is different. Some use small huddle rooms, while others require technology to support large boardrooms, with every variation in between. Regardless of your office setup, Samsung and Cisco have product options perfectly suited for your business scenario.

## Huddle spaces

Samsung QM49R + Cisco Webex Room Kit Mini has everything users need to quickly connect and get to work.



QM49R + Webex Room Kit Mini



### How do open offices benefit from huddle spaces?

Many businesses today opt for open space floor plans and agile teams that combine local and remote workers. To help enable this workstyle, small, private meeting areas, or huddle spaces, allow teams to quickly gather for informal discussions, brainstorms or other extemporaneous collaboration sessions and get work done.



Bright Environment



Up to 5 Participants

## Small meeting rooms

Samsung's UHD signage under 55-inches + Webex Room Kit includes refined UHD picture quality and a full web conference kit in a single device from Cisco.



QM 55" ↓ + Webex Room Kit



Bright Environment



Up to 7 Participants



QB 55" ↓ + Webex Room Kit



Dark Environment



Up to 7 Participants

## Large meeting rooms

Samsung's UHD signage over 65-inches + Webex Room Kit Plus or Webex Room Kit Pro delivers unmatched picture quality and size with powerful technology for specialized conferencing scenarios from Cisco.



QM 65" ↑ + Webex Room Kit Plus/Pro



Bright Environment



More than 7 Participants



QB 65" ↑ + Webex Room Kit Plus/Pro



Dark Environment



More than 7 Participants

## **About Samsung Electronics Co., Ltd.**

Samsung Electronics Co., Ltd. inspires the world and shapes the future with transformative ideas and technologies. The company is redefining the worlds of TVs, smartphones, wearable devices, tablets, cameras, digital appliances, medical equipment, network systems, and semiconductor and LED solutions. For the latest news, please visit the Samsung Newsroom at [news.samsung.com](https://news.samsung.com). For more information about Samsung SMART Signage, visit [www.samsung.com/business](https://www.samsung.com/business) or [www.samsung.com/displaysolutions](https://www.samsung.com/displaysolutions).

## **About Cisco**

Cisco (NASDAQ:CSCO) is the worldwide technology leader that has been making the Internet work since 1984. Our people, products and partners help society securely connect and seize tomorrow's digital opportunity today. Discover more at [thenetwork.cisco.com](https://thenetwork.cisco.com) and follow us on Twitter at @Cisco.

Copyright © 2020 Samsung Electronics Co. Ltd. All rights reserved. Samsung is a registered trademark of Samsung Electronics Co. Ltd. Specifications and designs are subject to change without notice. Non-metric weights and measurements are approximate. All data were deemed correct at time of creation. Samsung is not liable for errors or omissions. All brand, product, service names and logos are trademarks and/or registered trademarks of their respective owners and are hereby recognized and acknowledged.

Samsung Electronics Co., Ltd.  
416, Maetan 3-dong, Yeongtong-gu, Suwon-si, Gyeonggi-do 443-772, Korea

2020-02