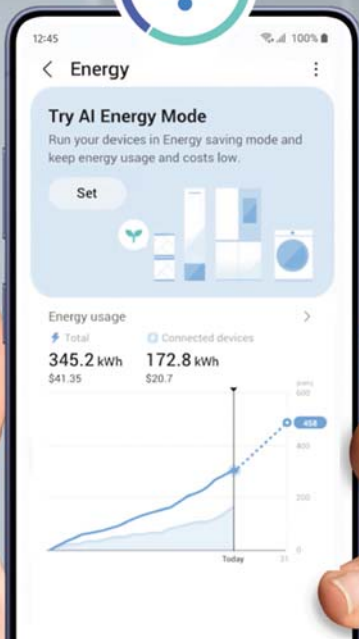


# SAMSUNG

## A smarter home that saves every day for you.

Think less. Save more. Live smarter.

Promotion Period: 16 June - 7 September 2026



Sit back, relax.  
Your home appliances got this!

Switch on AI Energy Mode

Save up to **\$2,080<sup>+</sup>**  
in 5 years

 SmartThings

Check out  
the deals inside!

# Smarter living starts with



# SmartThings

SmartThings brings your home together effortlessly — connecting what you love and simplifying how you live. It's the foundation of smart living.

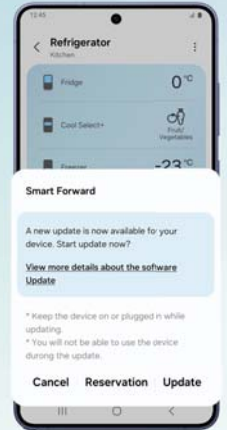
## 1 Instantly see what's going on in your home

Assign your appliances to rooms via Map View for easy overall control — anytime, anywhere.



## 2 Future-proof your existing appliances

Smart Forward ensures that your Wi-Fi-connected appliances are protected and regularly updated.



## The power of connection, enhanced by Bespoke AI



### AI Home

The AI Home smart screen monitors your devices and tracks energy use to make life easier. From clean clothes to fresh food, your home works smarter, keeping everything running seamlessly.



### Bixby

Talk to your home appliances directly or via your phone. Simply say, "Hi Bixby," and let your voice do the work — starting a wash, checking what's in the fridge, and more.



### Knox Security

Feel safe every step of the way. With Samsung Knox, your data and smart connections stay private, protected, and worry-free.

## Simply connect and try it now at:

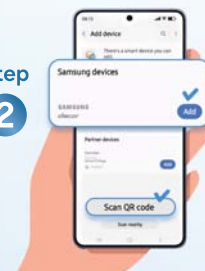
<https://www.samsung.com/sg/home-appliances/bespoke-ai-smarththings/>

Step 1



Open the app and tap (+)

Step 2



Tap "Add" button or "Scan QR Code"

Step 3



If you selected 'Scan QR code' in the app, simply scan the code on your appliance.

# Let your home appliances do the saving for you!



## Worry less about your energy bill

Activate AI Energy Mode<sup>1</sup> via the SmartThings App to track energy consumption and enjoy savings.



### Reduce energy usage by up to:

**70%**<sup>4</sup>

**Bespoke AI Washer**  
Washes effectively with cold water using EcoBubble™ technology.

**28%**<sup>6</sup>

**Bespoke AI WindFree™ Air Conditioner**  
Learns your usage patterns and analyses room conditions to adjust the room temperature and compressor frequency.

**15%**<sup>3</sup>

**Bespoke AirDresser**  
Intelligently reduces energy usage for certain cycles.

**20%**<sup>5</sup>

**Bespoke AI Dryer**  
Optimises the cycle time and the Inverter compressor speed.

**15%**<sup>2</sup>

**Bespoke AI Refrigerator**  
Optimises compressor speed and operation.

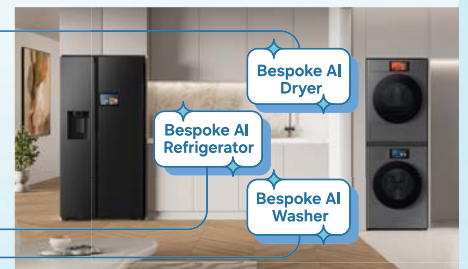
**23%**<sup>7</sup>

**Bespoke Dishwasher**  
Monitor and intelligently uses less energy with the 'Pots & Pans' program.

## Build your own energy-saving AI home



**Save up to \$2,080<sup>8</sup>**  
Big energy wins with AI Energy Mode<sup>1</sup>  
That's how much you can save with our Bespoke AI Appliances in 5 years



**Calculate your potential savings with our Energy Rate Calculator**

Curious how much your smart home can save you? Just enter your energy cost (\$/kWh) and appliance details to see your savings. Try now: [www.samsung.com/sg/home-appliances/sustainable-home/](http://www.samsung.com/sg/home-appliances/sustainable-home/)

## Get the most out of every dollar you spend

Plus, get up to \$400 off\* when you redeem your Climate Vouchers on our energy-efficient appliances.



\*Values estimated on a five-year basis. AI energy-saving calculator only provides estimated values for guidance only. For accurate and precise estimates, we recommend consulting with your utility provider or a qualified energy professional. Actual energy bills may vary depending on various factors, including, but not limited to, product model, and usage condition and patterns. <sup>1</sup>Subject to eligibility under the Climate-Friendly Households Programme by NEA and PUB. For a full list of participating retailers, visit [www.go.gov.sg/cfhp](http://www.go.gov.sg/cfhp)

# Oven

Culinary magic unfolds with every dish



## SmartThings Pro Tip

Relaxing on the sofa after a long day? Keep dinner under control without leaving your seat. With your Samsung oven connected to the SmartThings app, you can check the cooking progress, and adjust the settings from your phone. Perfect dinner, uninterrupted comfort.



Cook with upper and lower zones

Cook with the whole oven



## Dual Cook Steam™

Whether you're preparing a multi-course meal or perfecting a single dish, enhance your creations by adding steam for perfectly moist and flavourful results.



## Air Fry

Indulgence does not have to be sinful! With hot air circulation, food is cooked with less oil and reduced fat, while staying crispy on the outside and juicy on the inside.



## Air Sous Vide<sup>8</sup>

Perfectly cooked food, no fuss! Enjoy even cooking with a system that maintains consistent temperatures, ensuring your food is deliciously tender and moist throughout.

## Dual Cook

Double the flavour, double the fun! With Dual Cook, roast vegetables to perfection at 220°C while baking apple pies to golden glory at 165°C — two dishes, two settings, endless culinary creativity! You can even use the entire oven to roast a whole chicken.

Elevate your love for cooking with our oven suite. Find the perfect oven for your kitchen and create dishes that bring joy and togetherness to every meal.



**Bespoke Built-in Oven**  
NV7B6675CAA/SP  
60cm, 76L  
Satin Beige

**\$3,128**

- Features:
- 10 Multi Functions
  - Dual Cook
  - Dual Cook Steam™
  - Air Fry, Air Sous Vide<sup>8</sup>
  - Pyrolytic Cleaning
  - Wi-Fi<sup>®</sup> Smart Control<sup>9</sup>

WxDxH: 595x570x596mm

SmartThings



**Built-in Oven**  
NV7B4430ZAB/SP  
60cm, 76L  
Black Stainless Steel

**\$1,999**  
RRP: ~~\$2,220~~

Special price\*

- Features:
- 8 Multi Functions
  - Dual Cook
  - Air Sous Vide<sup>8</sup>
  - Pyrolytic Cleaning
  - Wi-Fi<sup>®</sup> Smart Control<sup>9</sup>

WxDxH: 595x570x596mm

SmartThings



**Built-in Oven**  
NV7B41201AS/SP  
60cm, 76L  
Stainless Steel

**\$1,349**  
RRP: ~~\$1,715~~

Special price\*

- Features:
- 7 Multi Functions
  - 20 Auto Cook Programmes
  - Catalytic Cleaning
  - Wi-Fi<sup>®</sup> Smart Control<sup>9</sup>

WxDxH: 595x570x596mm

SmartThings



## SmartThings Cooking<sup>9</sup>

Get personalised recipe recommendations or even do smart meal planning. You can also monitor and control the oven remotely.

# Hood and Hob

Where all the culinary magic happens



Experience convenience at its best. Auto connectivity syncs your hob and hood\* seamlessly.

Auto Connectivity

\*Selected hood models only.



Whip up a delicious meal completely stress-free with Dual Flex Zone — cook larger quantities at once by combining burners to accommodate bigger pans.

Transform your kitchen with hoods that seamlessly integrate into your space. Make a statement with our Wall-Mount Hood, or enjoy sleek efficiency with our Telescopic Hood for added freedom and flexibility, elevating your cooking experience.



**Bespoke Wall-mount Hood**  
NK36CB665WWHSP  
90cm, 1,070 m<sup>3</sup>/hr  
Clean White

**\$1,816**

- Features:
- 3 Speed Levels + Boost
  - Baffle Grease Filters (Dishwasher safe)
  - Charcoal Filter
  - LED Bar Lighting
  - Auto Connectivity<sup>10</sup>: Hob to Hood communication
  - Wi-Fi<sup>®</sup> Smart Control<sup>9</sup>

WxDxH: 898x500x646~1066mm

SmartThings

FREE\*  
\$200 e-voucher



**Wall-mount Hood**  
NK36C5703TS/SP  
90cm, 744 m<sup>3</sup>/hr  
Stainless Steel with Black Glass

**\$1,299**

- Features:
- 3 Speed Levels + Boost
  - Aluminum Mesh Filters
  - Auto Connectivity<sup>10</sup>: Hob to Hood communication
  - Touch Control

WxDxH: 900x455x620~1145mm

FREE\*  
\$50 e-voucher



**Telescopic Hood**  
NK36M1030IS/UR  
90cm, 379 m<sup>3</sup>/hr  
Stainless Steel

**\$509**

- RRP: ~~\$605~~
- Special price\*
- Features:
- 3 Speed Levels
  - Aluminium Mesh Filters
  - Charcoal Filters

WxDxH: 898x301x180mm

FREE\*  
\$50 e-voucher



**Telescopic Hood**  
NK24M1030IS/UR  
60cm, 392 m<sup>3</sup>/hr  
Stainless Steel

**\$449**

- RRP: ~~\$504~~
- Special price\*
- Features:
- 3 Speed Levels
  - Aluminium Mesh Filters
  - Charcoal Filters

WxDxH: 598x301x180mm

FREE\*  
\$50 e-voucher

Get cooking with confidence using our induction hobs! Combining sleek, modern design with effortless operation, our hobs make cooking a breeze. Whether you're a seasoned cook or a culinary newbie, our range has got your covered!



**Bespoke Induction Hob**  
NZ64B5067YY/SP  
60cm, 7.4 kW/30A<sup>®</sup>  
White & Glam Beige

**\$2,624**

- Features:
- 4 Zones with Dual Flex Zone
  - 15 Power Levels + Max Boost
  - Slim Fit
  - Auto Connectivity<sup>10</sup>: Hob to Hood communication
  - Wi-Fi<sup>®</sup> Smart Control<sup>9</sup>
- \*Power Limit Adjustment: 3.0kW (HDB Friendly), 4.0kW, 7.4kW

WxDxH (Cut-out size): 560x480x58mm

SmartThings HDB FRIENDLY

FREE\*  
\$200 e-voucher



**Induction Hob**  
NZ63B5056AK/SP  
60cm, 3.4 kW/15A  
Black

**\$1,799**

- RRP: ~~\$2,018~~
- Special price\*
- Features:
- 3 Zones with Single Flex Zone
  - 9 Power Levels + Max Boost
  - Slim Fit
  - Wi-Fi<sup>®</sup> Smart Control<sup>9</sup>

WxDxH (Cut-out size): 560x480x58mm

SmartThings HDB FRIENDLY

FREE\*  
\$100 e-voucher



**Induction Hob**  
NZ63B4026AK/SP  
60cm, 3.4 kW/15A  
Black

**\$1,449**

- RRP: ~~\$1,614~~
- Special price\*
- Features:
- 3 Zones with Dual Ring
  - 9 Power Levels + Max Boost
  - Slim Fit
  - Wi-Fi<sup>®</sup> Smart Control<sup>9</sup>

WxDxH (Cut-out size): 560x480x58mm

SmartThings HDB FRIENDLY

FREE\*  
\$350 e-voucher

# Cooking Appliances Deals

## Buy more, save more on your dream kitchen!

Mix and match, bundle selected ovens, hobs and hoods to maximise savings plus free e-vouchers!



**Bespoke Built-in Oven**  
NV7B6675CAA/SP  
60cm, 76L  
Satin Beige

**\$3,128**



**Bespoke Induction Hob**  
NZ64B5067YY/SP  
60cm, 7.4 kW/30A<sup>o</sup>  
White & Glam Beige

**\$2,624**



**Bespoke Wall-mount Hood**  
NK36CB665WWHSP  
90cm, 1,070 m<sup>3</sup>/hr  
Clean White

**\$1,816**



**Total savings: \$600**



**Built-in Oven**  
NV7B4430ZAB/SP  
60cm, 76L  
Black Stainless Steel

**\$1,999**

RRP: \$2,220



**Induction Hob**  
NZ63B5056AK/SP  
60cm, 3.4 kW/15A  
Black

**\$1,799**

RRP: \$2,018



**Wall-mount Hood**  
NK36C5703TS/SP  
90cm, 744 m<sup>3</sup>/hr  
Stainless Steel with Black Glass

**\$1,299**



**Total savings: \$1,040**



**Induction Hob**  
NZ63B4026AK/SP  
60cm, 3.4 kW/15A  
Black

**\$1,449**

RRP: \$1,614



**Telescopic Hood**  
NK36M1030IS/UR  
90cm, 379 m<sup>3</sup>/hr  
Stainless Steel

**\$509**

RRP: \$605



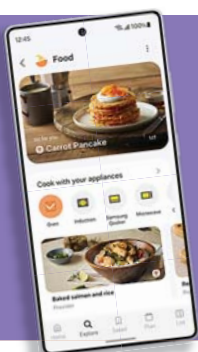
**Total savings: \$661**

Images are for illustrative purposes only.



**FREE\***

**1 x cooking lesson (2 pax) @ Let's Yori Cooking Studio**  
when you buy 2 or more cooking appliances +++++



**Samsung  
Food**

Meet your new personal kitchen assistant —  
the all-in-one app with SmartThings!

- 1 Browse and save recipes with AI
- 2 Prepare healthy meals for the week
- 3 Send recipe settings directly to your oven

For more details:

<https://www.samsung.com/sg/home-appliances/samsung-food/>

# Dishwasher

Powerful cleaning that fits your everyday routine

Big meals. Piles of dirty dishes? Bring it on. Our dishwashers tackle the chores with powerful cleaning and smart convenience — so you can get back to the moments that matter.



NEW

**Freestanding Dishwasher**  
**DW80H73KBBFSP**  
14 Place Settings  
Black DOI

**\$1,999**

- Features:
- AI Energy Mode™
  - AI Wash
  - WaterJet Clean™
  - AutoRelease™
  - Wi-Fi® Smart Control®

WxDxH: 598x600x845mm

SmartThings



NEW

**Freestanding Dishwasher**  
**DW70H73YCFESP**  
14 Place Settings  
Stainless Steel Black

**\$1,299**

- Features:
- Hygiene Care
  - AutoRelease™
  - Wi-Fi® Smart Control®

WxDxH: 598x600x845mm

SmartThings



NEW

**Freestanding Dishwasher**  
**DW70H73YCFRSP**  
14 Place Settings  
Stainless Steel

**\$1,299**

- Features:
- Hygiene Care
  - AutoRelease™
  - Wi-Fi® Smart Control®

WxDxH: 598x600x845mm

SmartThings



## Relax, SmartThings has dishwashing covered

Remotely monitor and control your dishwasher, track energy use and get smart tips for effortless clean-ups.

Just finished cooking? Connect your oven and dishwasher for the right wash cycle recommendations — so your dishes get the care they need while you sit back and relax.

## Built for big meals, messy moments and zero sink drama.



### WaterJet Clean™

Cleans thoroughly from every angle with dual rotating wash arms that help remove stubborn food residue with ease.



### AutoRelease™

No guesswork, no waiting. As soon as the cycle wraps, the door pops open automatically\*, releasing steam and cutting down excess moisture. The result? Faster, more effective drying.



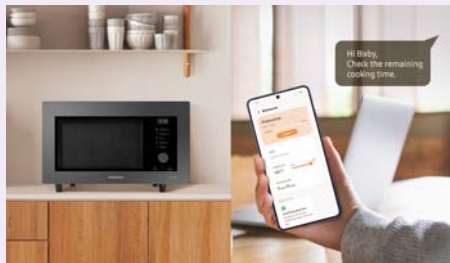
# Microwave Oven

Cook smart and in style

## Discover culinary finesse and style

Be delighted by our smart microwave oven, equipped with a myriad of features for your culinary adventures.

 SmartThings



### Smart & Effortless

With SmartThings, your microwave becomes part of an intelligent kitchen ecosystem. Adjust settings remotely from your smartphone, receive cooking notifications and access personalised recipes for your culinary adventures.



### All-in-one Oven

Cook and prepare different types of food. Oven cook, grill, steam, air fry, microwave and even ferment ingredients, like dough and yoghurt with this all in one appliance.



### Healthier Fried Food

Blending modern elegance with practicality, enjoy healthier fried food with Air Fry. Effortlessly prepare crispy favourites, making it a versatile addition to any kitchen.

## Convection Microwave Oven



MC35R8088LC/SP | 35L

**\$948**

Features:  
• HotBlast™ for faster cooking time  
• PowerGrill Duo for perfectly grilled food

WxDxH: 528x481x404mm



MC32DB7746KCSP | 32L

**\$749**

Features:  
• Air Fry for healthier fried food  
• Steam Function  
• Wide Grill for consistent cooking  
• Wi-Fi® Smart Control\*

WxDxH: 523x515x330mm

 SmartThings



MC28A5137CK/SP | 28L

**\$499**

Features:  
• SlimFry™ with less oil needed  
• Sensor Cook for precise cooking  
• 15 Auto Cook Programmes for effortless meals

WxDxH: 517x476x310mm

## Grill Microwave Oven



MG30T5018CW/SP | 30L

**\$343**

Features:  
• Grill Fry with Crusty Plate  
• Home Dessert Function  
• Bread Defrost Function

WxDxH: 517x425x297mm



MG23K3513AK/SP | 23L

**\$211**

Features:  
• Browning Plus Function  
• Quick Defrost Function

WxDxH: 489x392x275mm



## Solo Microwave Oven



MS30T5018AK/SP | 30L

**\$272**

Features:  
• Home Dessert Function  
• Power Defrost Function  
• Full Glass Touch Panel

WxDxH: 517x410x297mm



MS23DG4504AGSP | 23L

**\$201**

Features:  
• Home Dessert Function  
• Power Defrost Function  
• Dial Control

WxDxH: 489x377x275mm



MS23K3513AK/SP | 23L

**\$181**

Features:  
• Quick Defrost  
• Auto Cook Programme

WxDxH: 489x374x275mm

# The smarter way to manage your home and food

Featuring AI-powered convenience, SmartThings connectivity and intelligent energy management, the Bespoke AI Side-by-Side Refrigerator Family Hub 9" is designed for homes that want the best of smart living.



### 9" LCD AI Home Screen<sup>17</sup>

Easily manage your smart devices, access apps and get personalised information all from an intuitive control centre on the door.



### Auto Open Door<sup>18</sup>

When your hands are full, sensors on both sides let you open the door with a light tap.



### AI Energy Mode

Reduce energy consumption by up to 10%. Automatically adjust your usage with AI Energy Mode<sup>2</sup> in SmartThings Energy.



### On-device Bixby<sup>7</sup>

Open the fridge doors with a simple voice command, or even ask Bixby to tell you the temperature inside!



### SmartThings<sup>9</sup>

Plan meals, track expiry dates and discover recipes — enabling you to cook smarter and reduce food waste.

## More room and freshness for life's everyday moments

Thoughtful innovations work behind the scenes to keep your food fresh and your kitchen running smoothly.

### More room for what matters

Store more groceries, drinks and family favourites with SpaceMax™ technology, which maximises storage space without increasing the fridge's exterior size.

### Freshness you can count on, year after year

Enjoy dependable cooling with a 10-year warranty on the Digital Inverter Compressor.



# Refrigerator

Elevating the standards of refrigeration

From compact apartments to growing families, Samsung offers a refrigerator designed for every home.



French Door Refrigerator

Side-by-Side Refrigerator

Top Mount Freezer

Bottom Mount Freezer

1-Door Refrigerator

## For growing households

Generous storage and flexible organisation for family meals and entertaining.

### French Door Refrigerator

**RF59C7664B1/SS**  
648L, Black DOI  
Non-Plumbing Dispenser

**\$3,899**



**Features:**

- AI Energy Mode<sup>2</sup>
- All-Around Cooling System
- Auto Ice Maker
- Wi-Fi<sup>®</sup> Smart Control<sup>3</sup>
- Beverage Center™ - In-door Water Dispenser & AutoFill Water Pitcher<sup>®</sup>

WxDxH:  
912x723x1779mm



**RF59C7004B1/SS**  
649L, Black DOI

**\$3,699**



**Features:**

- AI Energy Mode<sup>2</sup>
- All-Around Cooling System
- Auto Ice Maker
- Wi-Fi<sup>®</sup> Smart Control<sup>3</sup>

WxDxH:  
912x723x1779mm



**RF59A70T4S9/SS**  
649L, Refined Inox

**\$3,099**



**Features:**

- All-Around Cooling System
- Power Cool & Power Freeze Function

WxDxH:  
912x723x1779mm



**RM70F63R3WSS**  
648L

**\$3,999**



**Features:**

- AI Energy Mode<sup>2</sup>
- All-Around Cooling System
- Kitchen Fit
- Wi-Fi<sup>®</sup> Smart Control<sup>3</sup>

WxDxH:  
912x683x1853mm



**RF49C5103B1/SS**  
550L, Black DOI

**\$1,799**



**Features:**

- AI Energy Mode<sup>2</sup>
- Twin Cooling Plus™ System
- Wi-Fi<sup>®</sup> Smart Control<sup>3</sup>

WxDxH:  
817x765x1776mm



**RF49C5103S9/SS**  
550L, Refined Inox

**\$1,799**



Free\* Pairing Kit (worth \$111) with purchase of every 2 Bespoke units

## Connected living, made simple

Stay effortlessly in control with AI-powered features and SmartThings connectivity that work around your lifestyle.

### Side-by-Side Refrigerator

**RS90F65D3FSS**  
615L, Black DOI  
Non-Plumbing Dispenser

**\$4,399**



**Features:**

- AI Home
- AI Energy Mode<sup>2</sup>
- Auto Open Door<sup>®</sup>
- All-Around Cooling System
- Wi-Fi<sup>®</sup> Smart Control<sup>3</sup>

WxDxH:  
912x716x1786mm



**RS70H65K3TSS**  
635L, Matt DOI Metal  
Non-Plumbing Dispenser

**\$2,799**



**Features:**

- AI Energy Mode<sup>2</sup>
- All-Around Cooling System
- Wi-Fi<sup>®</sup> Smart Control<sup>3</sup>

WxDxH:  
912x716x1786mm



**RS70F65K3FSS**  
635L, Black DOI  
Non-Plumbing Dispenser

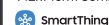
**\$2,799**



**Features:**

- AI Energy Mode<sup>2</sup>
- All-Around Cooling System
- Wi-Fi<sup>®</sup> Smart Control<sup>3</sup>

WxDxH:  
912x716x1786mm



**RS70F65Q3FSS**  
655L, Black DOI

**\$2,199**



**Features:**

- AI Energy Mode<sup>2</sup>
- All-Around Cooling System
- SpaceMax™ Technology
- Wi-Fi<sup>®</sup> Smart Control<sup>3</sup>

WxDxH:  
912x716x1780mm



**RS70F65Q3TSS**  
655L, Matt DOI Metal

**\$2,199**



**Features:**

- AI Energy Mode<sup>2</sup>
- All-Around Cooling System
- SpaceMax™ Technology
- Wi-Fi<sup>®</sup> Smart Control<sup>3</sup>

WxDxH:  
912x716x1780mm



Use your \$400\* climate e-vouchers on our 3 and 4-Ticks refrigerators!



\*Valid for all 3 and 4-Ticks Samsung Refrigerator models. Subject to eligibility, under the Climate-Friendly Households Programme by NEA and PUB. For a full list of participating retailers, visit [www.go.gov.sg/cfhp](http://www.go.gov.sg/cfhp)

# Freshness you can count on

Practical, energy-efficient and reliable, these refrigerators are designed to meet the everyday needs of modern homes.

## Top Mount Freezer

**RT62K705JBS/SS**  
622L, Black Inox

**\$1,988**



Features:  
• Twin Cooling Plus™ System  
• SpaceMax™ Technology

WxDxH:  
836x788x1862mm

**RT53DG7A6CB1SS**  
530L, Black DOI

**\$1,599**



Features:  
• AI Energy Mode<sup>2</sup>  
• Twin Cooling Plus™ System  
• Wi-Fi® Smart Control<sup>9</sup>

WxDxH:  
790x725x1855mm

SmartThings

**RT53DG7A6CS9SS**  
530L, Refined Inox

**\$1,599**



Features:  
• AI Energy Mode<sup>2</sup>  
• Twin Cooling Plus™ System  
• Wi-Fi® Smart Control<sup>9</sup>

WxDxH:  
790x725x1855mm

SmartThings

**RT47CB668B1SS**  
460L, Black DOI

**\$1,449**



Features:  
• AI Energy Mode<sup>2</sup>  
• All-Around Cooling System  
• SpaceMax™ Technology  
• Auto Ice Maker  
• Wi-Fi® Smart Control<sup>9</sup>

WxDxH:  
700x717x1825mm

SmartThings

**RT47CG6444S9SS**  
465L, Refined Inox

**\$1,399**



Features:  
• All-Around Cooling System  
• SpaceMax™ Technology

WxDxH:  
700x717x1825mm

**RT42CB668B1SS**  
410L, Black DOI

**\$1,299**



Features:  
• AI Energy Mode<sup>2</sup>  
• All-Around Cooling System  
• SpaceMax™ Technology  
• Auto Ice Maker  
• Wi-Fi® Smart Control<sup>9</sup>

WxDxH:  
700x672x1785mm

SmartThings

**RT42CG6644S9SS**  
415L, Refined Inox

**\$1,249**



Features:  
• AI Energy Mode<sup>2</sup>  
• All-Around Cooling System  
• SpaceMax™ Technology

WxDxH:  
700x672x1785mm

SmartThings

**RT35CG5444S9SS**  
348L, Refined Inox

**\$1,099**



Features:  
• All-Around Cooling System  
• SpaceMax™ Technology

WxDxH:  
600x709x1715mm

**RT40H25W3PSS**  
256L, Elegant Inox

**\$799**



Features:  
• All-Around Cooling System  
• Deodorising Filter

WxDxH:  
555x657x1635mm



**RT31CB5644C2SS**  
305L, Cotta Charcoal

**\$1,049**



Features:  
• AI Energy Mode<sup>2</sup>  
• All-Around Cooling System  
• SpaceMax™ Technology  
• Wi-Fi® Smart Control<sup>9</sup>

WxDxH:  
600x647x1715mm

SmartThings

**RT31CG5424S9SS**  
305L, Refined Inox

**\$999**



Features:  
• All-Around Cooling System  
• SpaceMax™ Technology

WxDxH:  
600x647x1715mm

**SmartThings Pro Tip**  
Curious about your energy consumption?  
SmartThings alerts you and automatically optimises cooling to help save energy via AI Energy Mode.

## Bottom Mount Freezer

**RB45DG600EB1SS**  
458L, Black DOI

**\$1,499**



Features:  
• AI Energy Mode<sup>2</sup>  
• All-Around Cooling System  
• SpaceMax™ Technology  
• Wi-Fi® Smart Control<sup>9</sup>

WxDxH:  
759x711x1780mm

SmartThings

**RB34T6054B1/SS**  
325L, Black DOI

**\$1,499**



Features:  
• All-Around Cooling System  
• SpaceMax™ Technology

WxDxH:  
595x658x1853mm

**RB43DG6005B1SS**  
427L, Black DOI

**\$1,399**



Features:  
• AI Energy Mode<sup>2</sup>  
• All-Around Cooling System  
• SpaceMax™ Technology  
• Wi-Fi® Smart Control<sup>9</sup>

WxDxH:  
700x705x1700mm

SmartThings

**RB43DG6005S9SS**  
427L, Refined Inox

**\$1,399**



Features:  
• AI Energy Mode<sup>2</sup>  
• All-Around Cooling System  
• SpaceMax™ Technology  
• Wi-Fi® Smart Control<sup>9</sup>

WxDxH:  
700x705x1700mm

SmartThings

**RB34C7B5CAP/SS**  
344L

**\$1,806**



Features:  
• AI Energy Mode<sup>2</sup>  
• All-Around Cooling System  
• Metal Cooling  
• Reversible Door<sup>13</sup>  
• Wi-Fi® Smart Control<sup>9</sup>

WxDxH:  
595x658x1853mm

SmartThings

**\$1,831** Clean White  
RRP: \$2,464



## Find the right fit for your kitchen

Whether you need a standalone refrigerator, freezer or modular configuration, enjoy flexibility that adapts to your changing lifestyle.

### 1-Door Refrigerator

**RR70H39C3TSS**  
387L, Gentle Silver

**\$1,799** NEW



Features:  
• All-Around Cooling System  
• Reversible Door<sup>13</sup>  
• Wi-Fi® Smart Control<sup>9</sup>

WxDxH:  
595x694x1858mm

SmartThings

**RZ32T7443AP/SS**  
323L

**\$1,897** NEW **\$1,922** Clean White  
RRP: \$2,160



Features:  
• All-Around Cooling System  
• Metal Cooling  
• Reversible Door<sup>13</sup>  
• Freezer / Fridge Convertible

WxDxH:  
595x688x1853mm

**RZ70H32H3TSS**  
323L, Gentle Silver

**\$1,799** NEW



Features:  
• Twist Ice Maker  
• Reversible Door<sup>13</sup>  
• Wi-Fi® Smart Control<sup>9</sup>

WxDxH:  
595x694x1858mm

SmartThings



# Washer Dryer Combo

Every wash a smart and hygienic clean

## One-stop laundry solution

Experience effortless, intelligent cleaning with our first heat pump washer dryer combo



### AI Home

7" wide LCD display touchscreen intuitive control centre



### AI Wash & Dry

Wash thoroughly but gently with less water and detergent



### Heatpump Drying Technology

Enhances fabric care and reduces drying time by up to 65%<sup>20</sup> as compared to a conventional washer dryer combo



### Auto Open Door

Allows humid air to escape to prevent damp odours



## Bespoke AI Laundry Combo

WD25DB8995BZSP  
25kg Wash/15kg Dry

**\$5,499**

### Features:

- AI Energy Mode<sup>4</sup>
- AI Home
- AI Wash & Dry
- Heatpump Drying
- Auto Open Door

WxDxH: 686x875x1110mm

Water Efficiency:   
Water Consumption: 3.90L/kg  
Reg. No: WM-2024/043454/TUV

**FREE\***

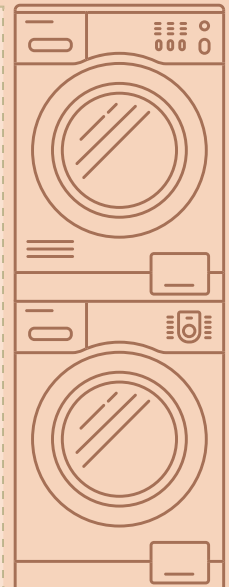
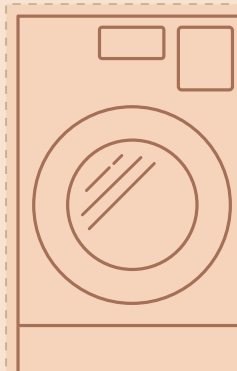
### Pedestal (worth \$299)

Raises the washer dryer to a comfortable height and includes storage space



### Space-saving

Free up valuable space for your laundry and storage needs



## Washer Dryer Combo



**NEW**

WD90F21BCSSP  
21kg Wash/11kg Dry

**\$2,649**

RRP: ~~\$3,299~~

### Features:

- AI Energy Mode<sup>4</sup>
- AI Home
- AI Wash
- AI Wash+
- AI EcoBubble™
- Auto Detergent Dispenser

WxDxH: 686x796x984mm

Water Efficiency:   
Water Consumption: 4.70L/kg  
Reg. No: WM-2025/046465/TUV



WD11DB9B84GDSP  
11kg Wash/7kg Dry

**\$2,149**

### Features:

- AI Energy Mode<sup>4</sup>
- AI Home
- AI Wash
- AI Ecobubble™
- Auto Detergent Dispenser

WxDxH: 600x550x850mm

Water Efficiency:   
Water Consumption: 4.50L/kg  
Reg. No: WM-2023/039784/TUV



WD12BB944DGBSP  
12kg Wash/8kg Dry

**\$2,139**

### Features:

- AI Energy Mode<sup>4</sup>
- AI Control
- AI Wash
- AI Ecobubble™
- Auto Detergent Dispenser

WxDxH: 600x695x850mm

Water Efficiency:   
Water Consumption: 4.00L/kg  
Reg. No: WM-2023/039674/TUV



WD11DB88B85GHSP  
11kg Wash/7kg Dry

**\$1,899**

### Features:

- AI Energy Mode<sup>4</sup>
- AI Control
- AI Wash
- AI Ecobubble™
- Auto Detergent Dispenser

WxDxH: 600x600x850mm

Water Efficiency:   
Water Consumption: 4.80L/kg  
Reg. No: WM-2024/042811/TUV



**NEW**

WD90HG6U94BBSP  
9kg Wash/6kg Dry

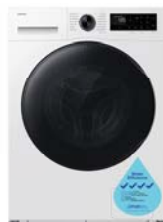
**\$1,499**

### Features:

- AI Energy mode<sup>4</sup>
- AI Control
- AI Wash
- AI Ecobubble™
- Flex Auto Dispense System

WxDxH: 600x590x850mm

Water Efficiency:   
Water Consumption: 5.10 L/kg  
Reg. No: WM-2026/049274/TUV



**NEW**

WD90HG5U34BESP  
9kg Wash/6kg Dry

**\$1,349**

### Features:

- AI Energy mode<sup>4</sup>
- AI Ecobubble™
- Super Speed
- Hygiene Steam

WxDxH: 600x590x850mm

Water Efficiency:   
Water Consumption: 5.10 L/kg  
Reg. No: WM-2026/049272/TUV



**NEW**

WD90HG4U04BESP  
9kg Wash/6kg Dry

**\$1,299**

### Features:

- Hygiene Steam
- Air Wash

WxDxH: 600x590x850mm

Water Efficiency:   
Water Consumption: 4.90 L/kg  
Reg. No: WM-2026/049461/TUV



# Front Load Washer

Every wash a smart and hygienic clean

## Bundle up for more savings!



**WW12BB944DGBSP**  
12kg Wash

**\$1,968**

- Features:
- AI Energy Mode<sup>4</sup>
  - AI Control
  - AI Wash
  - AI EcoBubble™
  - Auto Detergent Dispenser

WxDxH: 600x695x850mm

Water Efficiency: ✓✓✓✓  
Water Consumption: 4.00L/kg  
Reg. No: WM-2023/039674/TUV

SmartThings ecobubble™  
DIGITAL INVERTER QDrive™



**WW11DB9B84GDSP**  
11kg Wash

**\$1,949**

- Features:
- AI Energy Mode<sup>4</sup>
  - AI Home
  - AI Wash
  - AI EcoBubble™
  - Auto Detergent Dispenser

WxDxH: 600x550x850mm

Water Efficiency: ✓✓✓✓  
Water Consumption: 4.70L/kg  
Reg. No: WM-2024/042928/TUV

SmartThings ecobubble™  
DIGITAL INVERTER QDrive™



**WW11CB944DGHSP**  
11kg Wash

**\$1,699**

- Features:
- AI Energy Mode<sup>4</sup>
  - AI Control
  - AI Wash
  - AI EcoBubble™
  - Auto Detergent Dispenser

WxDxH: 600x600x850mm

Water Efficiency: ✓✓✓✓  
Water Consumption: 4.60L/kg  
Reg. No: WM-2024/042035/TUV

SmartThings ecobubble™  
DIGITAL INVERTER QDrive™



**WW90DB8U94GBSP**  
9kg Wash

**\$1,299** RRP: ~~\$1,499~~

- Features:
- AI Energy Mode<sup>4</sup>
  - AI Control
  - AI Wash
  - AI EcoBubble™
  - Auto Detergent Dispenser

WxDxH: 600x595x850mm

Water Efficiency: ✓✓✓✓  
Water Consumption: 5.50L/kg  
Reg. No: WM-2025/045437/TUV

SmartThings ecobubble™  
DIGITAL INVERTER QDrive™



**WW90DB7U94GESP**  
9kg Wash

**\$1,299** RRP: ~~\$1,499~~

- Features:
- AI Energy Mode<sup>4</sup>
  - AI Control
  - AI Wash
  - AI EcoBubble™
  - Auto Detergent Dispenser

WxDxH: 600x595x850mm

Water Efficiency: ✓✓✓✓  
Water Consumption: 5.50L/kg  
Reg. No: WM-2025/045436/TUV

SmartThings ecobubble™  
DIGITAL INVERTER QDrive™



**WW90DG6U34LESP**  
9kg Wash

**\$1,149**

- Features:
- AI Energy Mode<sup>4</sup>
  - AI Control
  - AI EcoBubble™

WxDxH: 600x595x850mm

Water Efficiency: ✓✓✓✓  
Water Consumption: 5.50L/kg  
Reg. No: WM-2025/045435/TUV

SmartThings ecobubble™  
DIGITAL INVERTER



**WW80FG3M05AWSP**  
8kg Wash

**\$899**

- Features:
- Hygiene Steam
  - Drum Clean
  - Digital Inverter Technology

WxDxH: 595x480x850mm

Water Efficiency: ✓✓✓✓  
Water Consumption: 5.10L/kg  
Reg. No: WM-2025/046618/SLS

DIGITAL INVERTER



**WW75TA046TE/SP**  
7.5kg Wash

**\$849**

- Features:
- Hygiene Steam
  - Super Eco Wash
  - EcoBubble™

WxDxH: 600x550x850mm

Water Efficiency: ✓✓✓✓  
Water Consumption: 4.80L/kg  
Reg. No: WM-2020/031260/TUV

ecobubble™  
DIGITAL INVERTER

### Energy-Saving Pro Tip

Smart washes, happier bills.

SmartThings AI Energy mode tracks energy use and helps reduce it by up to 70%.

# Dryer

Wash smarter, clean better

## Washer + Dryer Bundle deals

Ultimate Duo



**DV10DB94A0GDSP**  
10kg Dry

**\$2,199**

- Features:
- AI Energy Mode<sup>5</sup>
  - AI Home
  - AI Control
  - Intelligent AI Dry
  - Heatpump Technology

WxDxH: 600x600x850mm

SmartThings QDrive™  
DIGITAL INVERTER



**DV10BB9440GBSP**  
10kg Dry

**\$2,049**

- Features:
- AI Energy Mode<sup>5</sup>
  - AI Control
  - Intelligent AI Dry
  - Heatpump Technology

WxDxH: 600x600x850mm

SmartThings QDrive™  
DIGITAL INVERTER



**DV10BB9440GHSP**  
10kg Dry

**\$2,049**

- Features:
- AI Energy Mode<sup>5</sup>
  - AI Control
  - Intelligent AI Dry
  - Heatpump Technology

WxDxH: 600x600x850mm

SmartThings QDrive™  
DIGITAL INVERTER



+

Any Washer

Enjoy \$100 off\*



+

Any Washer

Enjoy \$100 off\*



+

Any Washer

Enjoy \$100 off\*



Premium Duo



**DV90BB7440GESP**  
9kg Dry

**\$1,699**

- Features:
- AI Energy Mode<sup>5</sup>
  - AI Control
  - Intelligent AI Dry
  - Heatpump Technology

WxDxH: 600x600x850mm

SmartThings QDrive™  
DIGITAL INVERTER

+

Any Washer

Enjoy \$100 off\*



Deluxe Duo



**DV90T6240LE/SP**  
9kg Dry

**\$1,499**

- Features:
- AI Control
  - Optimal Dry
  - Heatpump Technology

WxDxH: 600x600x850mm

SmartThings  
DIGITAL INVERTER

+

Any Washer

Enjoy \$100 off\*



Use your \$400\* climate e-vouchers on our 4-Ticks washing machines!

\*Valid for all 4-Ticks Samsung Washing Machine models. Subject to eligibility, under the Climate-Friendly Households Programme by NEA and PUB. For a full list of participating retailers, visit [www.go.gov.sg/cfhp](http://www.go.gov.sg/cfhp)

# Top Load Washer

Powerful and efficient washing

## Bespoke AI Top Load Washers



Intelligent washing that suggests suitable settings like water level, washing and rinsing time



Washes at 60°C to sanitise clothes and eliminate 99.9% of bacteria



Saves energy by up to 20% with AI Energy Mode<sup>4</sup>.



### Powerful wash, more savings with our 4 ticks Top Load Washers

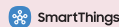


**WA80F15B6BSP**  
15kg Wash

**\$1,499**

- Features:
- AI Wash
  - Hygiene Steam
  - AI Energy Mode<sup>4</sup>
  - Digital Inverter Technology

WxDxH: 610x675x1089mm



Water Efficiency: ✓✓✓  
Water Consumption: 5.50L/kg  
Reg. No: WM-2025/045248/TUV



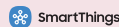
**WA80F13B6BSP**  
13kg Wash

**\$1,149** RRP: ~~\$1,299~~

Special price

- Features:
- AI Wash
  - Hygiene Steam
  - AI Energy Mode<sup>4</sup>
  - Digital Inverter Technology

WxDxH: 610x675x1059mm



Water Efficiency: ✓✓✓  
Water Consumption: 5.20L/kg  
Reg. No: WM-2025/045249/TUV



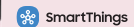
**WA80F13S5CSP**  
13kg Wash

**\$899** RRP: ~~\$1,049~~

Special price

- Features:
- AI Wash
  - AI Energy Mode<sup>4</sup>
  - Digital Inverter Technology

WxDxH: 610x675x1059mm



Water Efficiency: ✓✓✓  
Water Consumption: 5.20L/kg  
Reg. No: WM-2025/045250/TUV



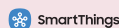
**WA10CG4546BVSP**  
10kg Wash

**\$799** RRP: ~~\$899~~

Special price

- Features:
- Super Speed
  - Compact Size
  - Digital Inverter Technology

WxDxH: 540x577x1008mm



Water Efficiency: ✓✓✓  
Water Consumption: 5.50L/kg  
Reg. No: WM-2024/044330/TUV

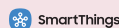


**WA80CG4546BVSP**  
8kg Wash

**\$699**

- Features:
- Super Speed
  - Compact Size
  - Digital Inverter Technology

WxDxH: 540x577x1008mm



Water Efficiency: ✓✓✓  
Water Consumption: 5.70L/kg  
Reg. No: WM-2024/044328/TUV



Use your \$400\* climate e-vouchers on our 4-Ticks washing machines!

**Climate Vouchers** ✓✓✓✓

\*Valid for all 4-Ticks Samsung Washing Machine models. Subject to eligibility, under the Climate-Friendly Households Programme by NEA and PUB. For a full list of participating retailers, visit [www.go.gov.sg/cfhp](http://www.go.gov.sg/cfhp)

AirDresser

Refresh and sanitise your laundry

# Bespoke AirDresser

Made in KOREA

### Suitable for:



Quick refresh and odour removal



Delicate or natural fabrics



Padded suits/ Dry-clean items



Sanitisation of household fabric items

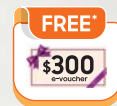
DF18CB8700CRSP  
Crystal Mirror

Special price\*

**\$2,399** RRP: ~~\$2,699~~

Features:

- Dual AirWash
- Dual JetSteam
- AI Dry
- AI Energy Mode<sup>3</sup>



WxDxH:  
445x595x1960mm

SmartThings

## Care for your clothes everyday from the comfort of home

Remove **99%** of odours<sup>23</sup>



Effective clothing care and deodorisation with Dual AirWash

Eliminate **99.9%** of bacteria and viruses<sup>24</sup>



Sanitise with Dual JetSteam



Gentle drying with Heatpump Technology

### Intelligent control



**AI Dry**  
Humidity-sensing technology detects clothes' dryness and intelligently adjusts drying time



**AI Energy Mode**  
Reduce energy consumption by up to 15%<sup>3</sup> by selecting AI Energy Mode

# Stick Vacuum

Complete hygienic cleaning solution

## Bespoke AI Jet Ultra

Our most powerful AI clean yet, with up to 400W<sup>25</sup> suction power and upgraded AI Cleaning Mode

**Bespoke AI Jet Ultra**  
**VS90F40DAK/SP**  
 400W<sup>25</sup> Suction Power  
 Satin Black

**\$1,699**

**Features:**

- All-in-One Clean Station™
- AI Cleaning Mode
- HEPA Filtration System
- 2 Removable Batteries (Up to 160 min run-time<sup>26</sup>)



**Main Brush 1:**

- Slim LED Brush+

**Main Brush 2:**

- Active Dual Brush

**Main Brush 3:**

- Spray Spinning Sweeper

WxDxH: 250x243x1036mm



### HEPA Filtration System

Enjoy peace of mind with the upgraded fine dust filter in the vacuum cleaner's HEPA Filtration system. Fine dust<sup>27</sup> particles are effectively captured, keeping your home environment clean.



### All-in-One Clean Station™

Charge and dispose dust automatically and hygienically, at the same time.

### AI Cleaning<sup>33</sup>

Experience intelligent cleaning - identifies different floor types and automatically adjusts suction power and brush speed.





## Bespoke AI Jet Handstick Vacuum

**Bespoke AI Jet Lite**  
**VS80F28DAS/SP**  
 280W<sup>28</sup> Suction Power  
 Santorini Beige

**\$1,499**

**Features:**

- All-in-One Clean Station™
- AI Cleaning Mode
- HEPA Filtration System
- 2 Removable Batteries (Up to 120 min run-time<sup>29</sup>)

**Main Brush 1:**

- Slim LED Brush+

**Main Brush 2:**

- Jet Dual Brush

**Main Brush 3:**

- Spray Spinning Sweeper

WxDxH: 250x202x1000mm



## Jet Series

**Jet 75E multi**  
**VS20B75AER1/SP**  
 200W<sup>29</sup> Suction Power  
 Teal Mint

**\$504**

**Features:**

- 99.999%<sup>30</sup> Multi-layered Filtration System
- 1 Removable Battery (Up to 60 min run-time<sup>29</sup>)
- 0.8L Fully Washable Bin

WxDxH: 250x215x1123mm



# Robot Vacuum

Complete hygienic cleaning solution

## Bespoke Jet Bot Combo

Intelligent all-in-one cleaning with steam sanitisation

**Bespoke Jet Bot Combo**  
VR7MD96514G/SP  
Vacuum and Mop

**\$1,799**

Features:

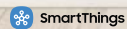
- Clean Station™ Steam+
- LIDAR Sensor
- Spinning Mops
- AI Floor Detect

**Jet Bot**

WxDxH: 359x364x100mm

**Clean Station™**

WxDxH: 444x510x547mm



### SmartThings Pro Tip

Spend less time cleaning and more time living.

Just set the area you want cleaned via the SmartThings app and let the Jet Bot Combo take care of it. Fast, precise, and effortlessly done.



### All-in-One Clean Station™ Steam+

It automatically washes and sanitises mops at high temperature<sup>31</sup> before drying them. It also empties the dust bag<sup>32</sup>, refills the water tank and recharges the battery.



### Powerful Mop Pads

Enjoy enhanced mopping for deep cleaning stains with dual rotating mop pads that spin at 170rpm.



### AI Floor Detect<sup>33</sup>

Identifies different floor types and lifts mop pads on carpets to avoid cross contamination by the wet mops.



### Steam Sanitisation of Mop Pads

High-temperature steam<sup>34</sup> is sprayed onto mop pads in the Clean Station™ to keep them hygienic and odourless.



### Remove human hairs and pet fur easily

A hair grinder in the brush cuts up hair finely, preventing tangles when sweeping up hairs.

#### Terms and conditions:

\*Promotion is only valid for customers who purchase selected Samsung products during the promotion period from 16 Jun - 17 Sep 2026 on Samsung Online Store (including Samsung Official Store on Lazada Singapore, Samsung Brand Store SG on Shopee Singapore, and Samsung Singapore on TikTok Shop), selected authorised consumer electronics and IT stores, and is subject to stock availability. To qualify for the bundle package(s), all purchased products must be from the same store and made on the same day to the same delivery address. Multiple invoices are allowed if the purchases are made in the same location, on the same day. Free gift(s) may only be redeemed on Samsung Digital Appliances Online Redemption Portal, during the Redemption Period from 13 Jul - 31 Dec 2026 and upon submission of valid Redemption Documents. Check in-store for more details. Redemption terms and conditions apply. No extension of Redemption Period will be allowed. Samsung reserves the right to reject any redemption that is not submitted with the Redemption Documents or in accordance with these terms. Gift(s) are while stocks last and are not exchangeable for cash or in-kind. Payment must be made in full or hire purchase approved before redemption is allowed. Samsung reserves the right to replace any gift with any item of similar or other value. Promotion is applicable to end-consumers only; not applicable to trade, corporate, or bulk purchase. Enhanced Partnership Programme (EPP) and staff purchases are not eligible for free gift(s) or bundle package(s). Display units are excluded from receiving free gift(s) and bundle package(s). Each customer can redeem gifts for a maximum of 4 product purchases. Products purchased under promotion are not eligible for exchange and/or refund, save in accordance with warranty terms. Samsung reserves the right to amend these terms and conditions without prior notice and without assigning any reason. Premium Slider Stacking Kit is only compatible with WW75TA046TE/SP, WW80T534DTT/SP, WW80T754DWH/SP, WW90T754DWH/SP, WW10T784DBX/SP, WD10T784DBX/SP, WD80TA046BE/SP, WD90T634DBN/SP, WD90T754DBX/SP. Information and specifications are accurate at the time of print and subject to change without prior notice. Images simulated for illustrative purposes only.

<sup>31</sup>Based on internal testing on AJ018DBAPKF/SP and AJ045DCJ2KF/SP models, comparing AI Energy Mode vs AI Auto Mode. Requires SmartThings App and Samsung account login required. Actual savings may vary by usage patterns and environment. <sup>32</sup>Value estimated on a five-year basis and based on a combination of System 4 units (9k + 9k + 12k + 24k). AI energy-saving calculator only provides estimated values for guidance only. For accurate and precise estimates, we recommend consulting with your utility provider or a qualified energy professional. Actual energy bills may vary depending on various factors, including, but not limited to, product model, and usage condition and patterns.

For more details, visit <https://www.samsung.com/sg/offer/bespokemylife/terms-and-conditions/>

# Escape the heat with Bespoke AI WindFree™ Air Conditioners



Whatever the weather brings, Samsung helps keep your home cool, comfortable and in control, so every day feels just right.

## WindFree™ Cooling

### Stay comfortably cool without the chill

Gentle, even airflow dispersed through 23,000 micro air holes for ultimate comfort.

## Welcome Cooling

### Arrive to a perfectly cooled home

Pre-cool your home remotely to your ideal temperature and come home to a perfectly cooled room.

## AI Energy Mode

### Smarter living, bigger savings

AI learns your usage habits and room conditions to automatically optimise the temperature, reducing energy use by up to 28%<sup>6</sup>.

## Fast Cooling

### Too hot to wait?

Cools the entire room up to 43%<sup>35</sup> faster than conventional air conditioners.

# Smarter control. Greater convenience.

Galaxy Ring | Galaxy Watch

**Sleep soundly all night with WindFree™ Good Sleep**  
Automatically<sup>36</sup> syncs with your Galaxy Watch or Galaxy Ring to optimise temperature based on your sleep patterns.

Samsung Knox Security on Galaxy Devices keeps your private information safe!

Hi, Bixby!  
Turn on WindFree™

**Remote control with smart Voice Control**  
Remotely control your home temperature with voice commands

# Cleaner air. Better comfort.

- 99% Antivirus
- 99% Anti-Bacteria
- 99% PM2.5 Reduction
- 99% Anti-Allergy

**Remove fine dust with 4-in-1 Filter**  
Removes 99%<sup>37</sup> of fine dust, bacteria, viruses and allergens, keeping your air fresh for greater comfort

**Simply cleans itself with Auto Clean**  
Automatic drying of the Heat Exchanger, removing 95%<sup>38</sup> of microorganisms and preventing buildup of bacteria and odour

System 4	Indoor Unit ('K Btu)				Price
	9	9	9	18	\$ 5,425
	9	9	9	24	\$ 5,525
	9	9	12	18	\$ 5,470
	9	9	12	24	\$ 5,570

**System 4**  
Fan Coil Unit includes: **\$5,425**  
9k Btu x3 + 18k Btu

**System 4**  
Fan Coil Unit includes: **\$5,345**  
9k Btu x2 + 12k Btu x2

SmartThings



System 3	Indoor Unit ('K Btu)			Price
	9	9	9	\$ 4,285
	9	9	12	\$ 4,330
	9	9	18	\$ 4,455
	9	12	18	\$ 4,500

**System 3**  
Fan Coil Unit includes: **\$4,330**  
9k Btu x2 + 12k Btu

**System 3**  
Fan Coil Unit includes: **\$4,545**  
12k Btu x2 + 18k Btu

SmartThings



System 2	Indoor Unit ('K Btu)		Price
	9	9	\$ 2,920
	9	12	\$ 2,965

**System 2**  
Fan Coil Unit includes: **\$2,920**  
9k Btu x2

SmartThings

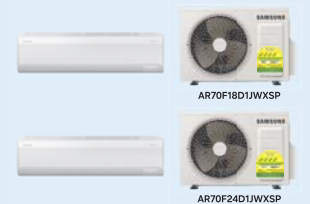


System 1	Indoor Unit ('K Btu)		Price
	9	9	\$ 1,499
	12	12	\$ 1,699
	18	18	\$ 1,899
24	24	\$ 2,299	

**System 1**  
Fan Coil Unit includes: **\$1,899**  
18k Btu x1

**System 1**  
Fan Coil Unit includes: **\$2,299**  
24k Btu x1

SmartThings



Check in-store for more combinations

Use your \$400<sup>\*</sup> climate e-vouchers on our 5-Ticks air conditioners!

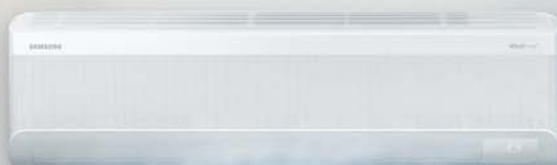
\*Promotion valid for specific Samsung Bespoke AI WindFree™ Air Conditioner system combinations. Free \$400 e-voucher with purchase of System 4 Air Conditioner (AJ070DCJ4KF/SP), \$300 e-voucher with System 3 (AJ065DCJ3KF/SP), and \$200 e-voucher with System 2 (AJ045DCJ2KF/SP). T&Cs apply. While stocks last. Price is inclusive of installation (for HDB standards only). Additional costs may apply depending on installation requests. Check in-store for more details. \*Valid for selected 5-Ticks Samsung Air Conditioner models. Subject to eligibility, under the Climate-Friendly Households Programme by NEA and PUB. For a full list of participating retailers, visit [www.go.gov.sg/cfhp](http://www.go.gov.sg/cfhp)

# SAMSUNG

## Feeling the unbearable heat?

### 3 STEPS to outsmart it

## Bespoke AI WindFree™ Air Conditioners



# 1

### Cool your home before you get in

No more walking into a hot space

Welcome Cooling

# 2

### Keep things comfortably cool

No harsh, direct air drafts, just the right temperature

WindFree™ Cooling

# 3

### Run your home efficiently

AI Energy Mode keeps saving for you in the background

AI Energy Mode

**PRO TIP**

AI Energy Mode reduces energy by 28%<sup>6</sup> saves up to **\$1,900<sup>^</sup>** in 5 years



## It doesn't end here: More savings, more rewards for you

### Enjoy free\* vouchers

Up to  
**\$400**  
e-voucher  
System 4  
(4 indoor units)

Up to  
**\$300**  
e-voucher  
System 3  
(3 indoor units)

Up to  
**\$200**  
e-voucher  
System 2  
(2 indoor units)

### Islandwide Promotion Redemption Details

Promotion Period: 16 Jun – 7 Sep 2026

Redemption Period: 13 Jul – 31 Dec 2026

Online Redemption Portal:

[www.samsung.com/sg/da-redemption](http://www.samsung.com/sg/da-redemption)

Redemption Documents:

- To upload to Online Redemption Portal
- Proof of purchase including original invoices/sales order confirmation/receipt
- Image of product serial number

Samsung Customer Care Hotline

1800-SAMSUNG (1800-7267864)  
+65 6228-3737 (from Overseas)

SmartThings Hotline

(Please contact this hotline only for SmartThings setup support.)  
WhatsApp +65 8085-9337

**SAMSUNG Members**

Register your product warranty with this app



Like & Share about us on  
[www.facebook.com/samsungsingapore](https://www.facebook.com/samsungsingapore)

Monday to Friday (Including Public Holidays)  
9am - 6pm