



Copyright © 2025 Samsung Electronics Co. Ltd. All rights reserved. Samsung is a registered trademark of Samsung Electronics Co. Ltd. Specifications and designs are subject to change without notice. Non-metric weights and measurements are approximate. All data were deemed correct at time of creation. Samsung is not liable for errors or omissions. All brand, product, service names and logos are trademarks and/or registered trademarks of their respective owners and are hereby recognized and acknowledged.



IoT solutions that drive business value

SmartThings Pro

Beyond devices, we design the complete experience

SmartThings Pro goes beyond simple connectivity — seamlessly bringing together diverse systems into one cohesive platform.

With AI-powered analytics and automated control, SmartThings Pro delivers an intuitive, user-centered environment.

From HVAC and displays to watches, energy, and lighting, SmartThings Pro allows you to effortlessly manage and control complex systems through a single solution.

Boost operational efficiency, enhance service quality, and improve user satisfaction — all at once.

With features that enhance the capabilities, flexibility and safety of spaces, SmartThings Pro becomes the core hub that connects it all.



Residential

Retail



Office

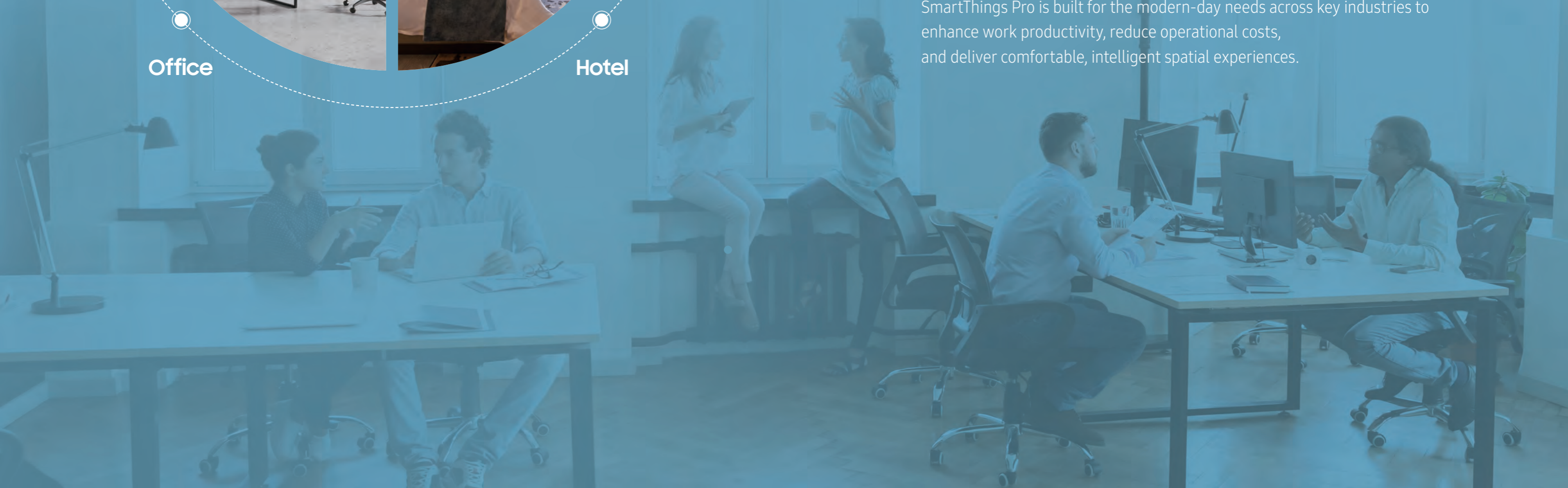
Hotel

Across every space, we provide tailored intelligence that fits your unique needs

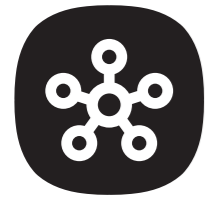
SmartThings Pro is an IoT solution optimized for diverse environments and needs, including offices, retail, hotels, and residential spaces.

By integrating real-time data analytics, energy efficiency, safety, and personalized user services,

SmartThings Pro is built for the modern-day needs across key industries to enhance work productivity, reduce operational costs, and deliver comfortable, intelligent spatial experiences.

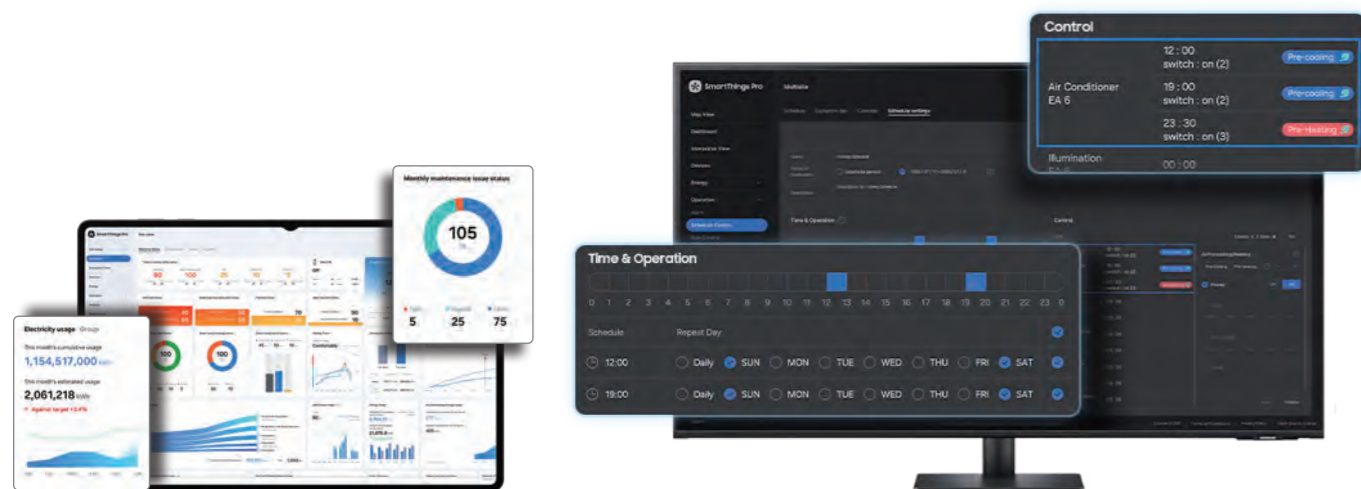


IoT Solution for integrated control of diverse devices



SmartThings Pro

- Control and manage system air conditioners (VRF), displays, home appliances, IoT sensors, and more
- Enable preventive maintenance with AI diagnostics on device performance and anomalies
- Optimize costs leveraging AI algorithm that detects and notifies inefficient operations



contents

01 SmartThings Pro	08
02 Key Features	10
03 Vertical Scenario	38
04 References	52
05 FAQ	56

01

SmartThings Pro

The IoT solution that brings together devices across homes, businesses, and schools into one platform, offering energy savings and streamlined management built for modern enterprises.

Key Features

- Integrated Management** Expand your business and manage devices seamlessly through a comprehensive ecosystem
- Automated Operations** Remotely manage multiple sites across different locations using a variety of automated settings
- Energy & Sustainability** Monitor energy consumption and maximize savings with optimal energy-saving solutions
- Operational Safety** Improve workplace safety and efficiency with real-time alerts on employee health status and task assignment

- Support for Various Device Types**
- Remote Integrated Control**
- Energy Management**
- Automated Operations**
- Safety Management**

Key Business Areas

Residential Facilities			
	Condos / Apartments Smart Apartment : Whole Unit Control	Rental Housing / Co-Living Smart Community for Owners, Operators, and Residents	Single Family Home Home Energy Management and Optimization
Commercial and Educational Facilities			
	Office / Retail (Franchise) Multi-site Management and Energy Efficiency Optimization	Hotel Personalized and customized Guest Room Experience	Education Multi-Site Management and Remote Maintenance
			Industrial Workplace Operational Safety and Task Coordination

Awards & Certifications

Future Publications Installation's Best of Show Future Publications Sound & Video Contractor's Best of Show Future Publications IT Pro's Best of Show	U.S. EPA certified Smart Home Energy Management System	Best Digital Signage Software Best Large Scale Control Systems	SmartThings platform certified with ISO 27001
red dot winner 2025	International Forum Design	Industrial Designers Society of America	

02

Key Features

SmartThings Pro connects various devices into one system, supporting efficient management and smart operation of business spaces.

1 Cloud-based platform

Broad Connectivity and Unified Management

SmartThings Pro connects a wide range of devices and solutions, from Samsung products to third-party systems, enabling data collection and analysis for seamless and comprehensive management.

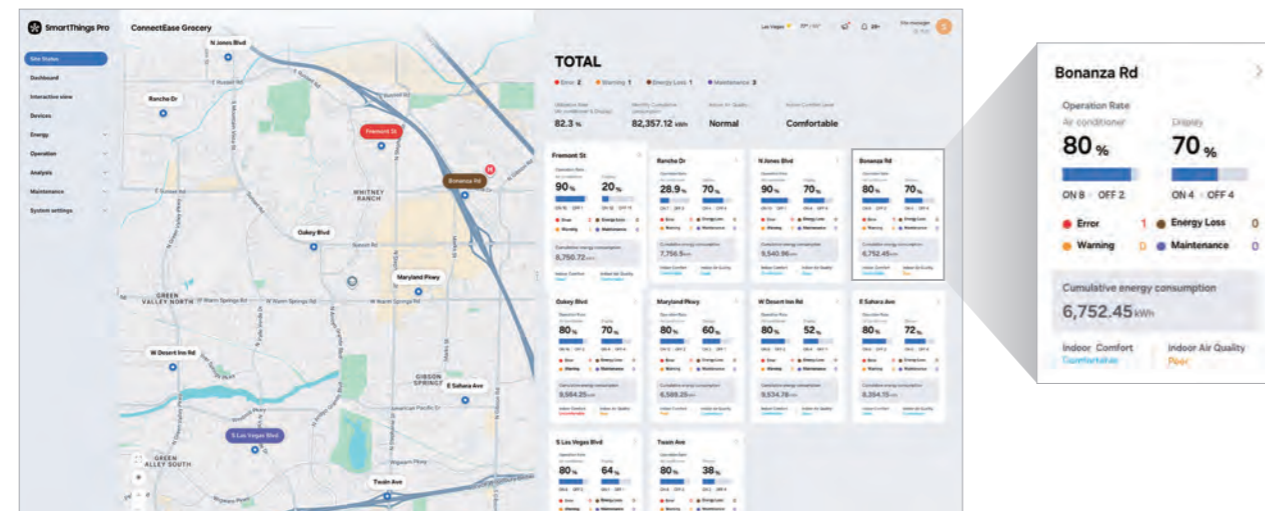


* Galaxy Watch has to be registered via SmartThings Pro

2 Multi-Site Management

Maximizing Operational Efficiency

Centrally monitor sites across multiple locations and maximize operational efficiency through automated control functions.



- Provides statistics for all sites (alerts, uptime, cleanliness, comfort)
- Maps each individual site's location with markers based on their address
- Allows for an easy view of alert status at a glance through marker colors

Multi-site Monitoring

Corporate and local teams are able to access real-time status of multiple sites. Easily scale from a few locations to hundreds without infrastructure complexity. Enable efficient management of sites through map display and card-based layouts.

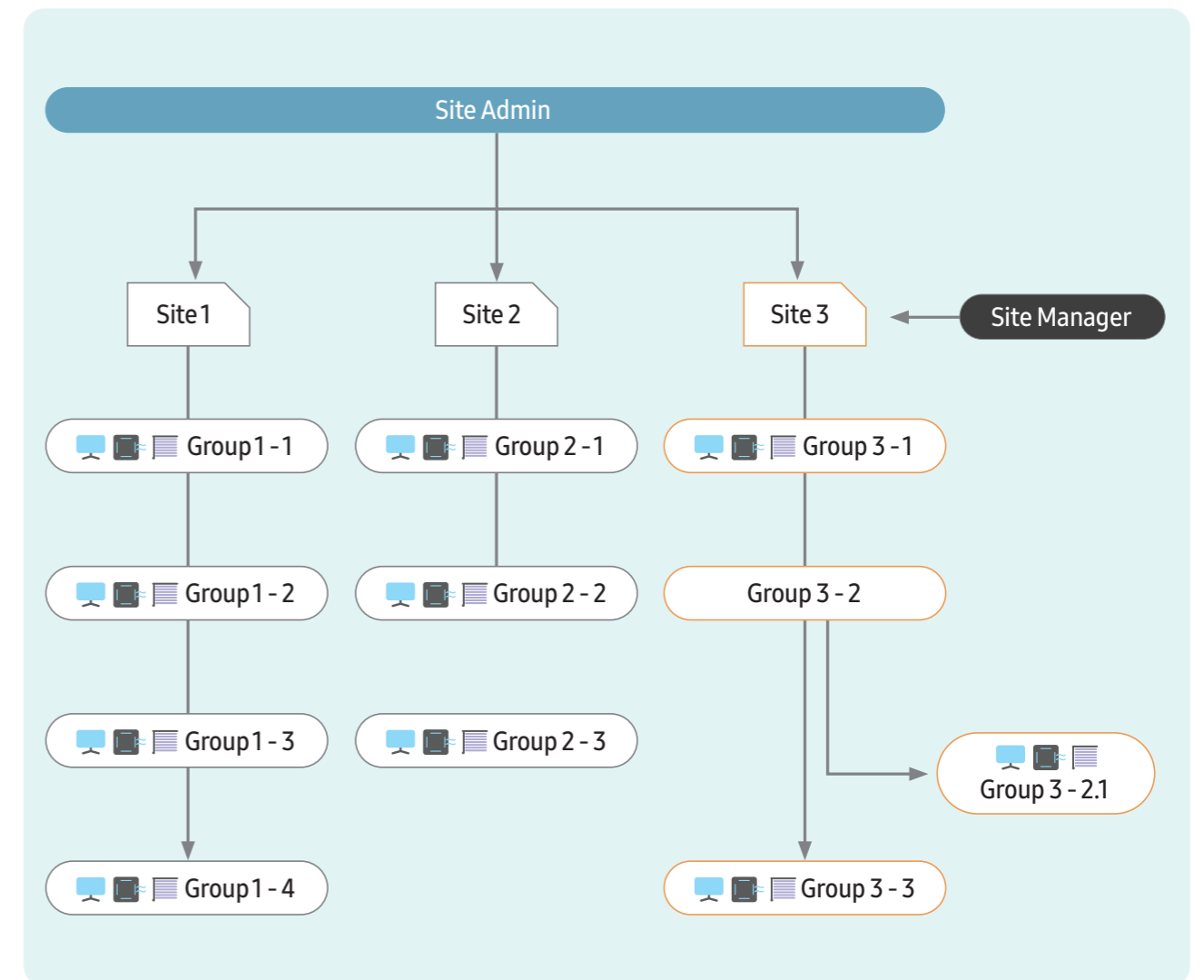


Multi-site map display Multi-site dashboard Site Status Cards Report for multi-site admins



Shows location information on the map based on building addresses Provides comprehensive ranking cards for managed sites (Uptime, event occurrences, energy consumption, etc.) Displays uptime, event status, energy usage, and air quality information for each site Offers comprehensive reports for all managed sites

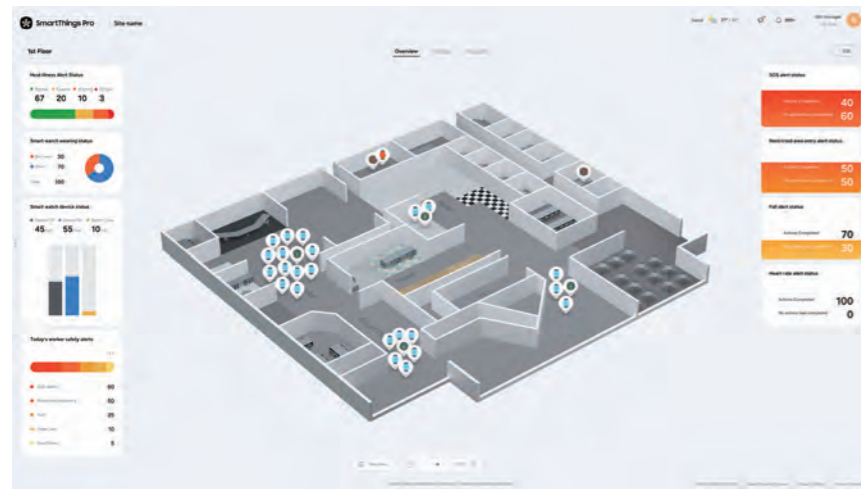
User account and access



Account	Site Admin	Site Manager
Definition	Admin account responsible for site creation and operation	Sub-account that can only use menus assigned by the Site Admin
Account Approval	Regional SmartThings Pro Operator	Each Site Admin
Associated sites	Main site and sub-sites created by this account	Single site
Device Control	Available	Available depending on permission level
Automation	Check and configure available	Available depending on permission level
Operation Data	Check and download available	Available depending on permission level
Alerts / Warnings	Check available	Available depending on permission level
Account Approval Authority	Site Manager	-
Installation Management	Device connection and license management	Device connection: Available depending on permission level License: Check available depending on permission level
Inspection Status	Check inspection status	Available depending on permission level

3 Interactive View

Navigate physical spaces using 3D interactive layout

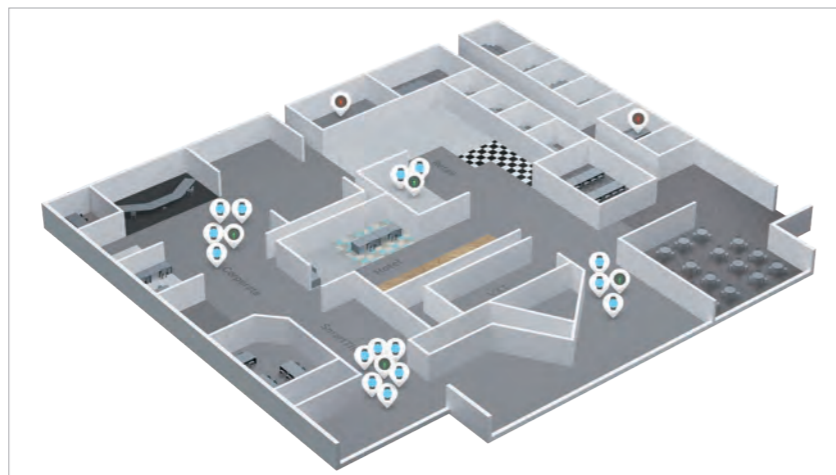


- Place devices and furniture on the 3D map
- Display additional information for device control through side widgets
- Utilize navigation to move between multiple floor plans

Indoor location tracking via Galaxy Watch

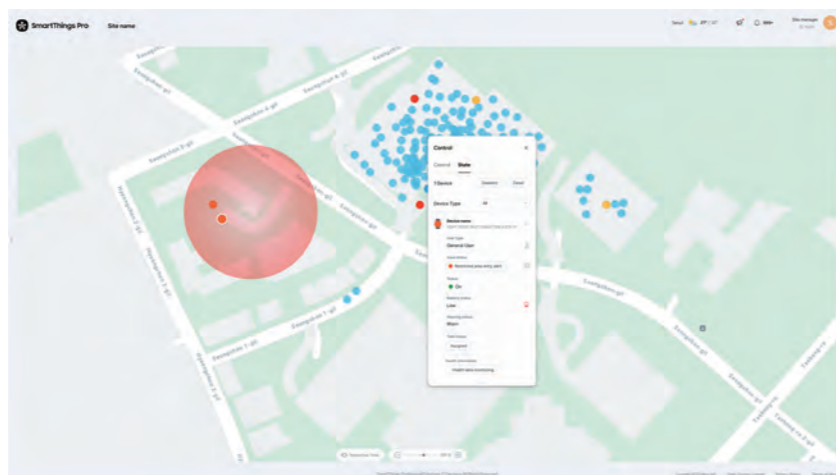
- By placing BLE beacons, when the watch detects a beacon, it is displayed next to that beacon
- Available to check the watch's status and the wearer's health information
- A shorter beacon scanning interval increases indoor location accuracy but reduces battery life

* BLE : Bluetooth Low Energy



Map View based on Galaxy Watch's GPS

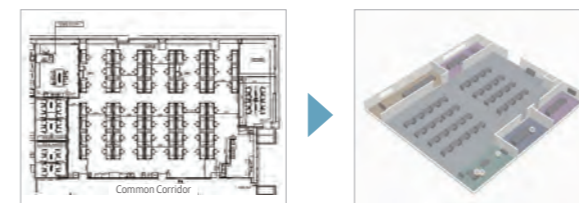
- The watch's GPS information is used to display its location on a map
- Available to check the watch's status and the wearer's health information
- A shorter GPS update interval increases outdoor location accuracy but reduces battery life



Gain in-site analytics and enable data-driven decisions

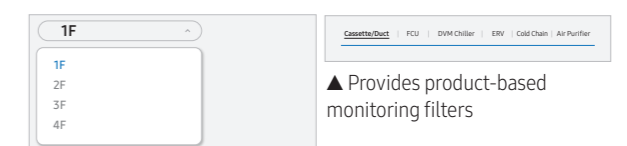
AI automatically converts architectural or sketched 2D floor plans into 3D models, creating realistic 3D layouts. Devices can be intuitively monitored and controlled by placing icons directly on the 3D map. * Available with Advanced License only

1. 3D Modeling Conversion of Floor Plans



Upload architectural floor plans or sketched images to automatically generate 3D layouts

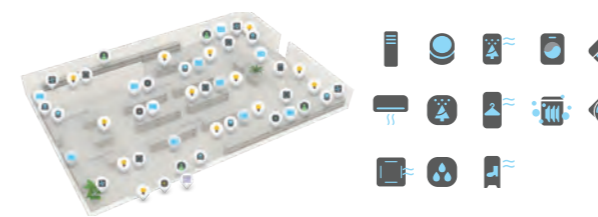
2. Systematic 3D Map Management Support



▲ Supports 3D map generation by floor and space

Create 3D layouts organized by floors and monitor devices by product category

3. Device Icon Placement

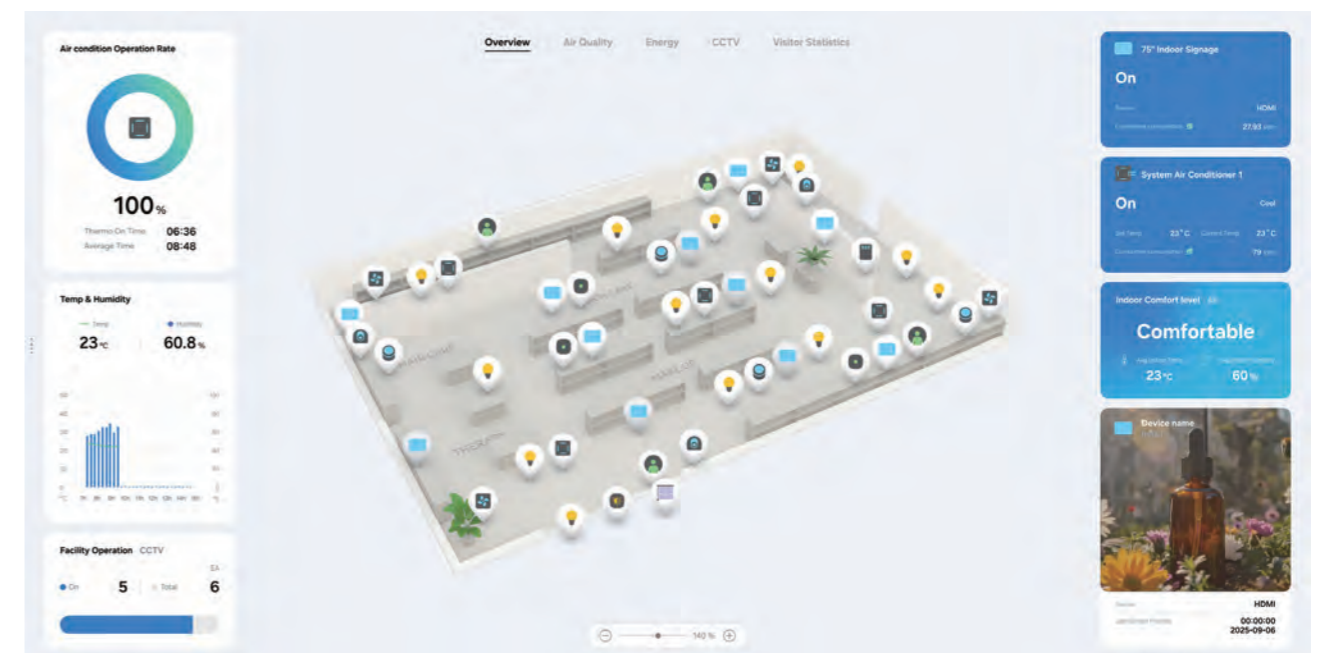


Place and manage devices directly on the 3D layout for easy visualization and control

4. Side Widget Card Placement



Add dashboard cards on both sides of the 3D map to monitor detailed operational information simultaneously



4 Custom Dashboard Widgets

Infographic Dashboard

Provides dashboard cards in a drag & drop format, allowing each account user to add or arrange various types of information on their personalized dashboard.

- Personalized dashboard customization by account
- Six categories (Operation / Air Quality / Environmental Information / Energy / Safety / Notification)
- A total of 86 widget cards available

Operation Card



1 Running Rate	Check the number and percentage of devices turned ON by device type
2 Cool/Heat Operation Rate	View the heating and cooling operation rate of air handling units for the entire system or by group
3 Device Status	Check detailed status of individual devices
4 Facility Operation	Monitor the number of ON/OFF devices and count of errors/warnings
5 Average Runtime	Check daily runtime of devices
6 Average Runtime Details	View daily runtime and estimated monthly runtime
7 Screen Preview	See now playing content on the display screen
8 Running Rate Trend	Track daily, weekly, monthly, and yearly running rate trends

Air Quality Card



1 Indoor Air Quality	Check indoor air quality (PM10/PM2.5) by group
2 Indoor Comfort Level	Check indoor temperature and humidity status by group
3 Air Purifier Filter Usage Time	Check filter usage time by group
4 Air Quality Sensor	Select a specific sensor to check air quality status
5 Comfort Level Trend	View daily / weekly / monthly / annual comfort trends
6 Air Quality Trend	View daily / weekly / monthly / annual air quality trend

Environmental Information Card



1 Environmental Information Trend	View daily / weekly / monthly / annual environmental information trends by group
2 Device Environment Information Trend	View daily / weekly / monthly / annual environment information trends by device type

Energy Card



1 Energy Usage Records	View energy consumption for the last 6 months, estimated monthly usage, and target comparison
2 Energy usage for this month	Compare daily energy usage this month vs last month
3 Energy Usage Comparison	Compare usage between periods, e.g., last month vs this month
4 Energy usage status by group	Check cumulative usage and billing information for top-consuming groups this month
5 Energy usage cost this month	Check last month's energy costs, this month's forecast, and potential savings by site/group
6 Energy Trend	View daily / weekly / monthly / annual energy trends
7 Energy Saving Solutions Status	Display energy-saving measures (Comfort, High-Efficiency Operation, Tariff-Based Control, AI Saving Mode, Inefficiency Detection)
8 Energy savings this month	Check energy savings by device type for the current month

Safety Card



1 Today's Worker Safety Alerts	Check alerts received by workers
2 SOS Alerts	Check SOS alerts for workers
3 Restricted Area Alerts	Check hazard zone alerts for workers
4 Fall Alerts	Check fall / accident alerts for workers
5 Heart Rate Alerts	Check abnormal heart rate alerts for workers
6 Heat Alerts	Check heat illness warning alerts for workers
7 Smartwatch Wearing Status	Check the wearing status of smartwatches

Notification Card

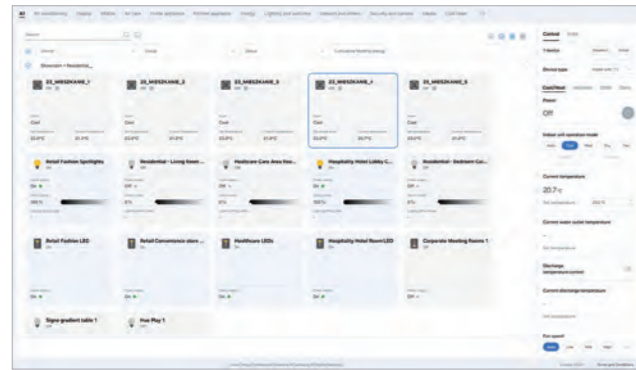


1 Monthly Fault Detection Status	Check the most frequent fault types and their occurrences
2 Monthly Maintenance Issue Status	Check alerts for fault diagnosis, regular inspection, and filter cleaning
3 Monthly Fault Detection and Action Status	Check completed vs pending actions
4 Top 5 Cumulative Errors / Warnings	Check top 5 devices with most errors / warnings by indoor / outdoor units or energy meters
5 Error / Warning	Check current error and warning occurrences
6 Error / Warning (List)	Check the number and details of errors / warnings
7 Inefficiency Notification	Check occurrence of inefficiency alerts
8 System Notification	Check system alert occurrences

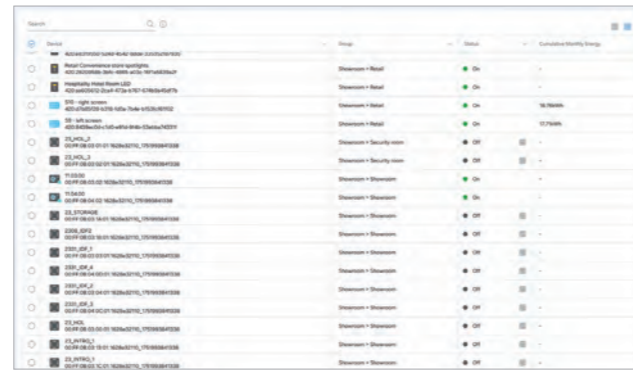
5 Device Control

Device Information Card

Provides a card-style interface to easily view the status of devices at a glance.



Card view



List view



Search device information



View details

Cycle Monitoring

Allows real-time monitoring of outdoor unit cycle information.

- Provides 26 cycle data points at 15-minute intervals (based on outdoor units connected to DMS / TCC)



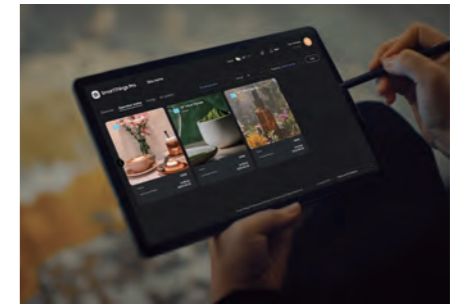
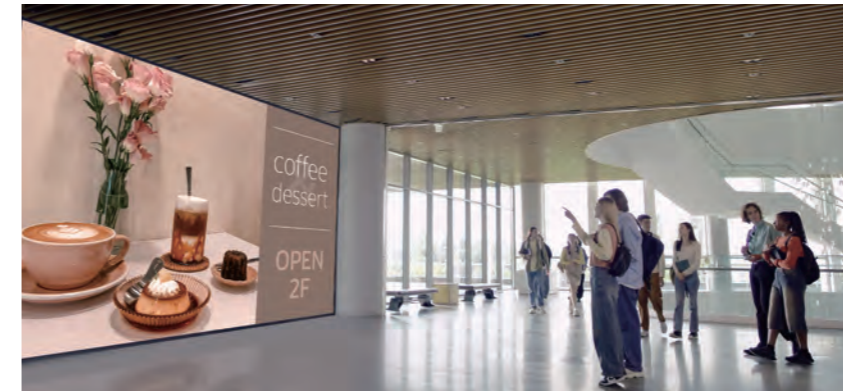
Outdoor unit cycle monitoring

Defrost Operation Status	Compressor Suction Temperature	Condenser Outlet Temperature	Compressor1 Status
Compressor2 Status	Main Cooling Valve Status	High-Pressure Gas Valve1	High-Pressure Gas Valve 2
EVI Bypass Value	Ct1	Ct2	High-Pressure
Low Pressure	Dual-Pipe Sensor Temperature	Electric Valve Opening 1	EVI EEV
Discharge Temperature1	Discharge Temperature 2	Outdoor Unit Fan Step	Compressor Current Frequency1
Compressor Current Frequency2	IPM Temperature1	IPM Temperature2	Compressor Cumulative Operation Time1
Compressor Cumulative Operation Time2	Water Temperature		

Key cycle information

Remote Management for B2B Display

With Screen Preview feature, remotely check the content currently being played in real time, enabling effective monitoring without on-site visits.



Device Information	Model name, firmware version, S/N	Device Control	Power, backlight, input source, volume, mute, channel
Network Information	IP address, wired MAC, wireless MAC	Device Settings	Auto power off, factory reset
Screen Information	Screen size, resolution	Security	Lock (buttons, remote control, USB, input source), PIN setup
Screen Preview	Monitor currently playing content at regular intervals	Energy	AI power-saving mode and energy usage monitoring

* The supported features may vary depending on the type of B2B display product

Safety Management with Galaxy Watch

Leveraging Galaxy Watch, keep track of employee health and emergency status in real time.

Location-based alerts and SOS call features help ensure safe on-site management.

Watch Information	Model Name, Watch Status, Battery Status, Wear Status
Health Information	Heart Rate, Body Temperature, Step Count, Calories, Distance Traveled
Safety Management	Alert Status, Task Status

- Real-time monitoring of heart rate, falls, heat-related illnesses, and alerts to administrators when entering hazardous areas
- Risk management and operational efficiency through data from external environment and location information



Galaxy Watch 8

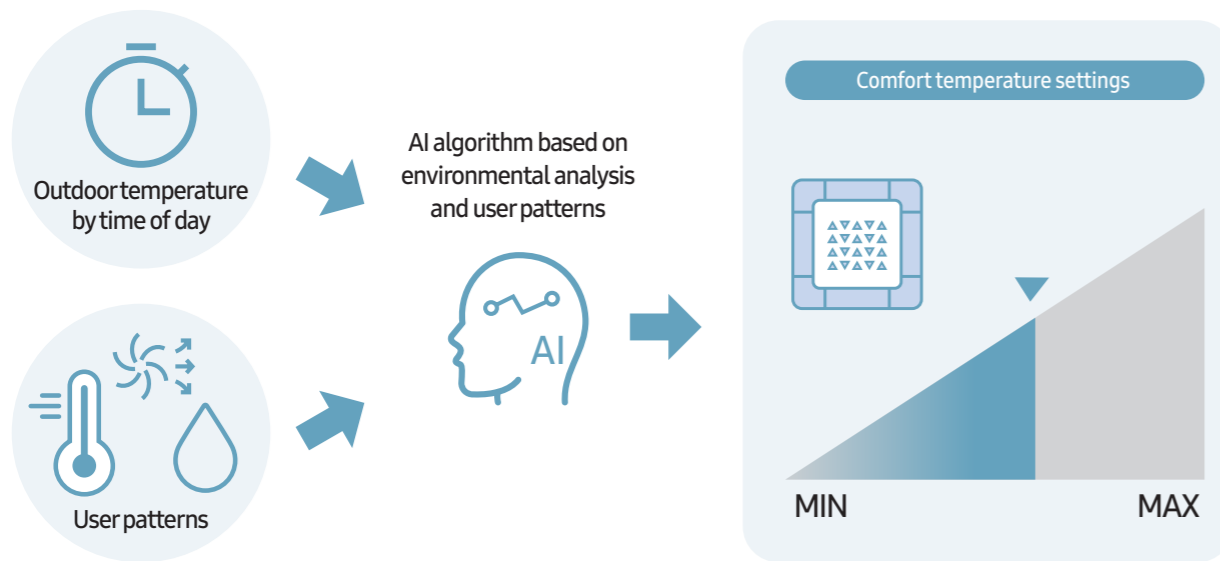


Employee health information

6 Energy Management

AI Comfort Control

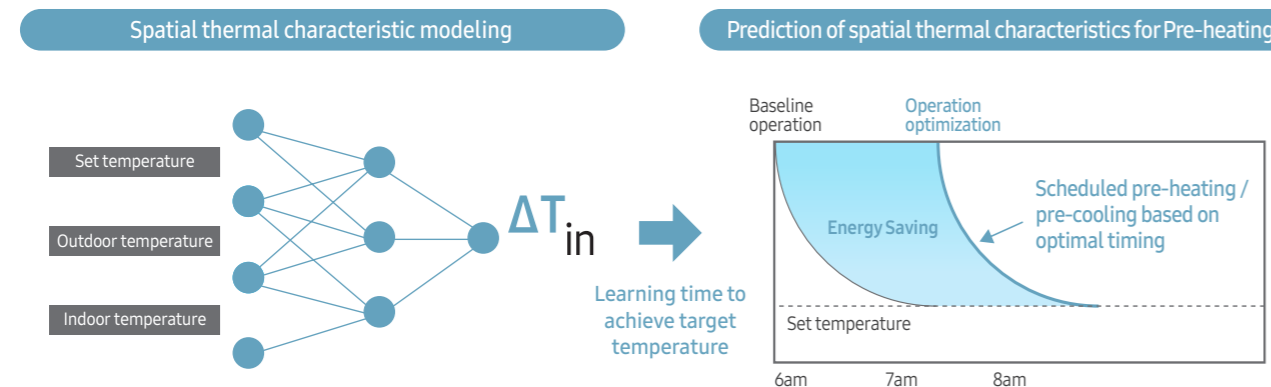
- Automatic control algorithm that prevents overcooling/overheating by learning existing operation patterns, analyzing real-time conditions, and reflecting occupant preferences
- AI modeling predicts optimal comfort temperature for multiple occupied spaces considering outdoor temperature, operational status/history, and indoor heat load
- Ensures comfort with minimal user intervention and preference-based automatic adjustments, providing energy savings by preventing overcooling/overheating



AI Pre-cooling & Pre-heating

- Optimizing the pre-cooling / pre-heating operation time based on spatial thermal conditions
- Estimates the time required to reach the target temperature based on temperature change and HVAC setting data
- Achieve energy savings rate up to 10.6% through learning-based operation optimization

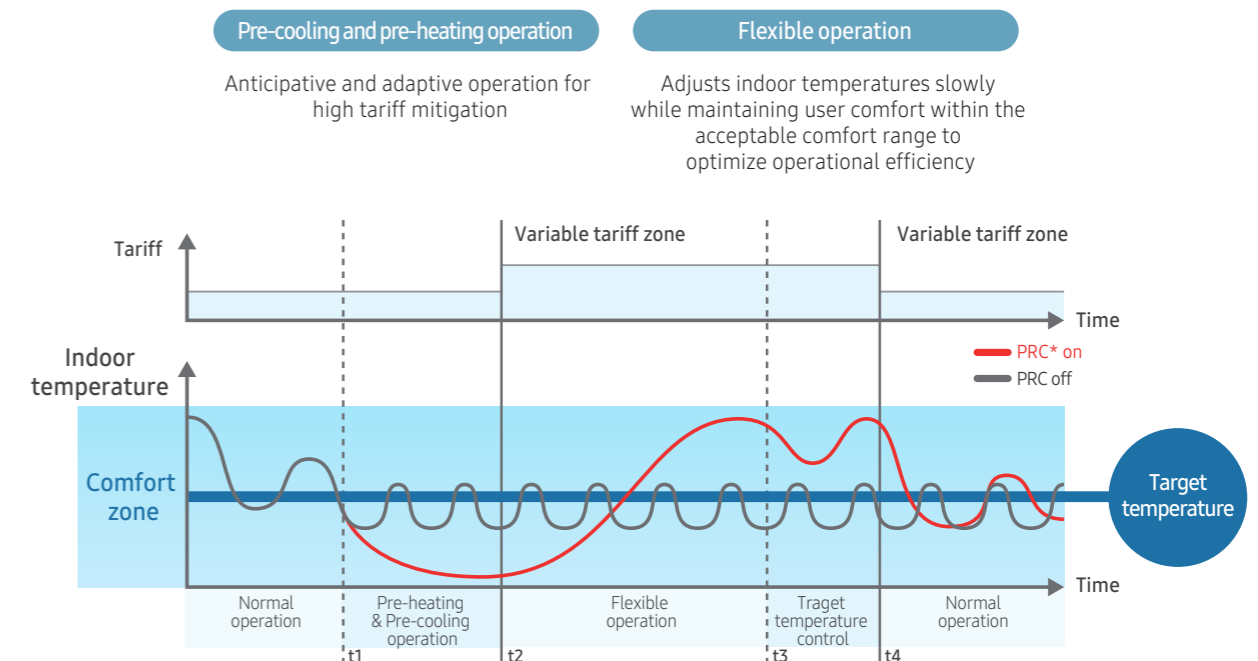
* These figures are based on simulation results and may vary depending on real-world usage conditions.



Pricing Response Control (PRC)

- Controls indoor temperature settings effectively to respond to fluctuating tariff systems over time, reducing energy consumption and operational costs
- Achieve energy savings rate up to 6.7% through variable tariff response control

* These figures are based on simulation results and may vary depending on real-world usage conditions.

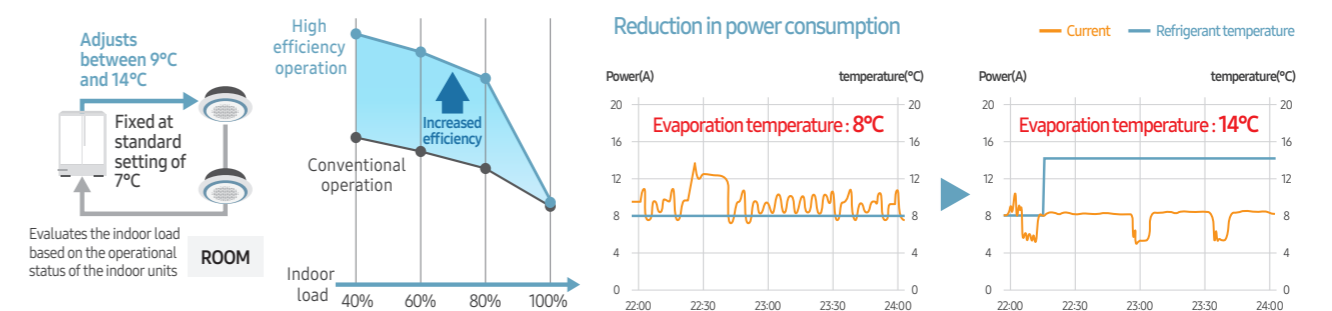


* PRC : Pricing Response Control

High-efficiency Operation Control

- Utilizes operational data from indoor units to forecast the indoor thermal load
- Enhances the efficiency of outdoor unit operation by controlling the temperature of refrigerant evaporation (cooling) and compression discharge (heating)
- Saves energy up to 18.6% through high-efficiency operation of outdoor units

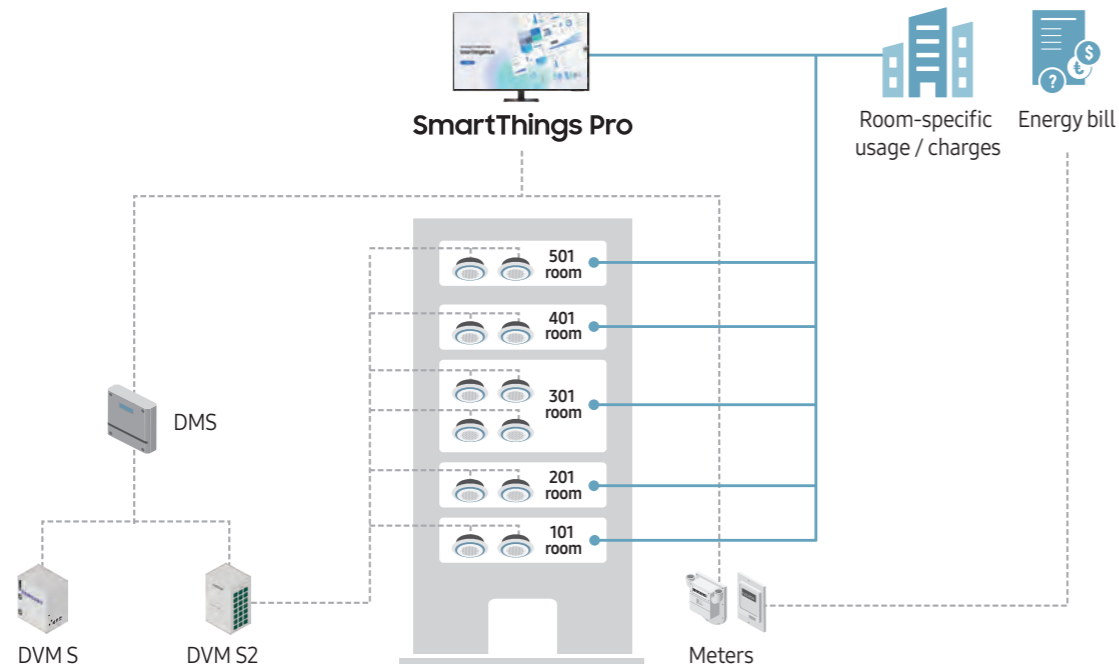
* These figures are based on simulation results and may vary depending on real-world usage conditions.



Energy Distribution

Based on the heat processing capacity of each indoor unit, the energy consumption of chilled / hot water equipment required for the operation of outdoor and system air conditioners is distributed by room.

- Used to identify energy consumption and calculate charges for each room



Energy Monitoring

See trends in energy consumption or production through various analytical charts.

- View energy usage trends by group or device type on a daily, weekly, monthly, or yearly basis
- Energy usage data can be queried for the entire group or individual groups
- Data analysis formats include heatmaps, comparison charts, and cumulative charts to visualize energy usage trends
- Energy usage heatmaps are displayed by dividing usage into quintiles based on maximum energy consumption
- Comparison charts allow you to compare energy usage data by group or device and visualize it in a graph

Energy Usage Heatmap (selected period)

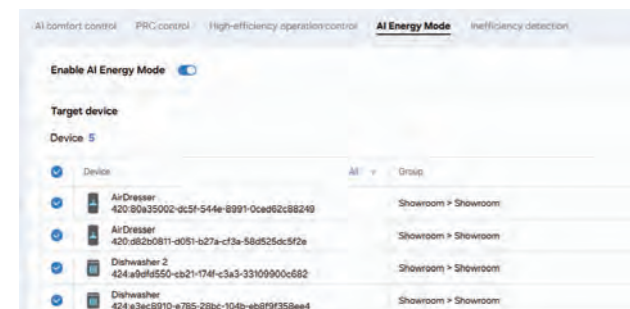


Energy Usage Trend (selected period)



AI Energy Mode

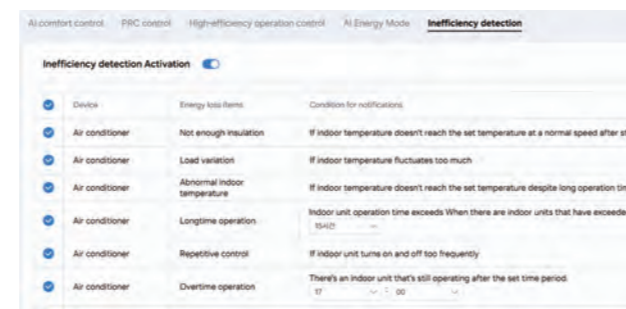
Supported devices : Air conditioners, Refrigerators, Washing machines, Dryers, Dishwashers, Displays



- Automatically adjusts energy usage of each device based on an analysis of environmental impact, energy tariff, and user comfort level
- Allows selection of active devices and control in maximum energy-saving mode

Inefficiency Detection (10 types)

Supported devices : Air conditioners, Refrigerators, Displays



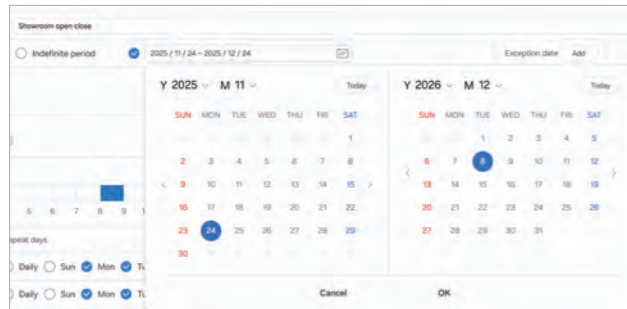
- Based on real-time data analysis of device status, notifications are triggered when inefficient energy use is detected
- For indoor units, inefficiency notification is triggered by setting specific conditions like runtime and on/off times

7 Automations

Schedule Control

Allows devices to be turned ON/OFF or settings to be changed according to a set schedule.

Schedule Settings



- Select only the devices you want
- Days of the week can be selected
- Can be set for a specific period or indefinitely
- When pre-cooling/pre-heating is enabled, the target temperature to reach at the start of the schedule can be set

Calendar Type Schedule Review



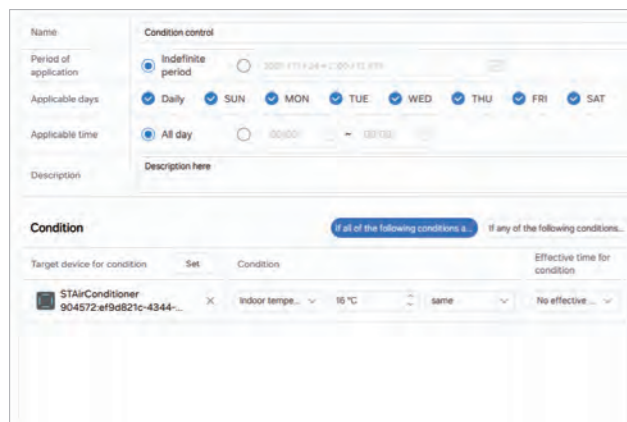
- View schedules set on a monthly basis
- Check detailed information for schedules set on specific dates
- Set exception days when the entire schedule does not operate

Condition Control

Automatically controls devices when user-defined input conditions are met.

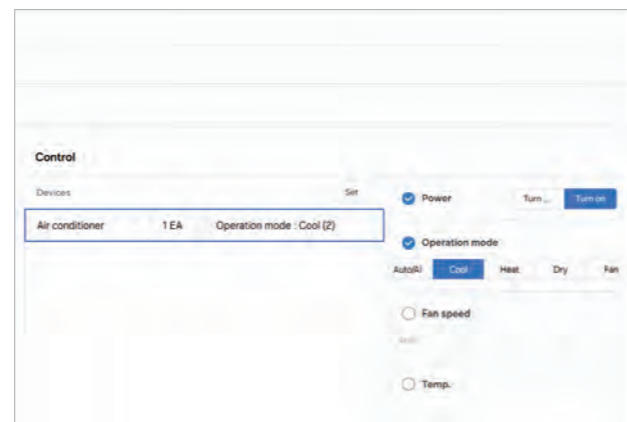
For example, start cooling when indoor temperature rises, or activate an air purifier when indoor air quality deteriorates. Using various conditions allows for more efficient device operation.

Condition Setting Screen



- Can be set for a specific period or indefinitely
- Select the days/times when the condition should be active

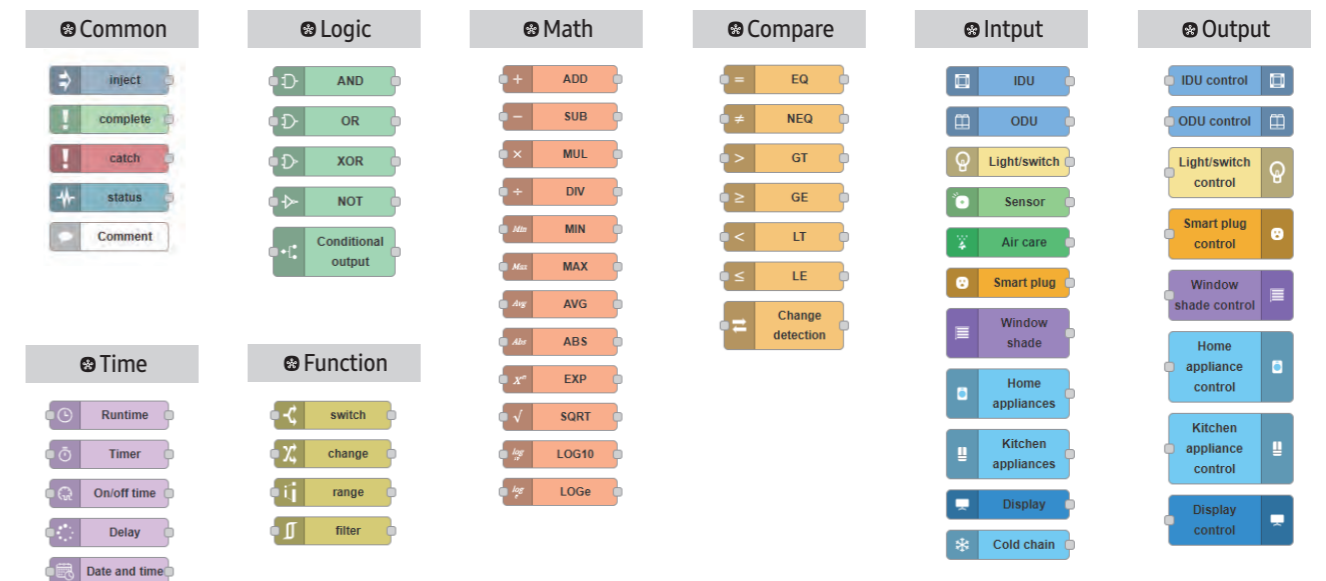
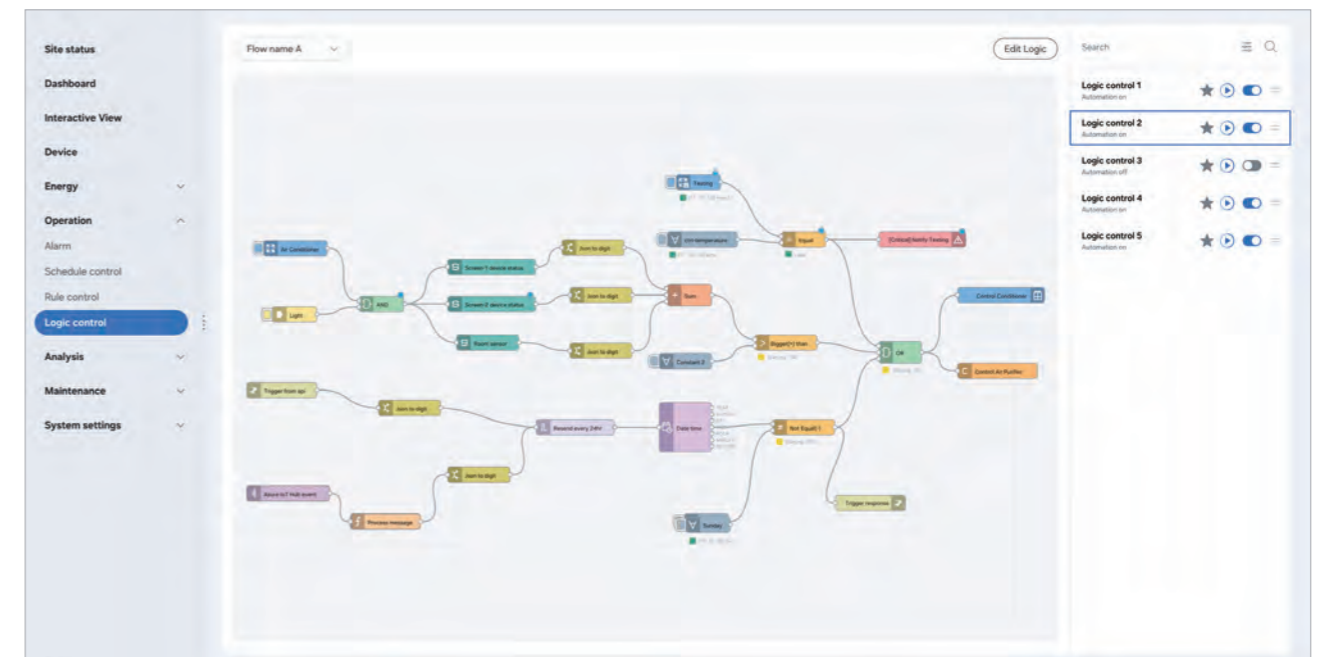
Device Control on Condition Setting Screen



Logic Control

Logic Control is a feature that allows you to create and monitor logic flows to automatically control devices such as air conditioners and lighting on-site, or trigger alerts, based on registered device data and your operational requirements. Each logic flow is called a Flow, and within each flow, Nodes are arranged to perform specific functions. Users can connect nodes to create the desired logic and achieve the intended output.

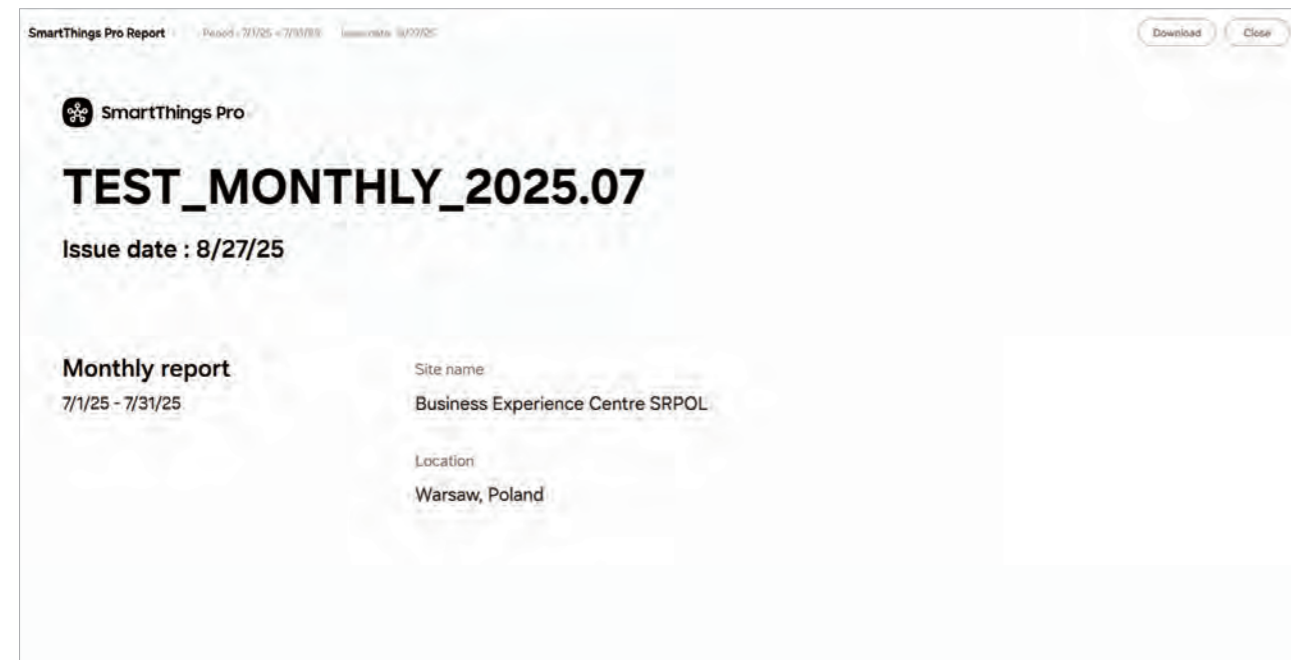
- Enables automation based on device status, weather, or energy usage
- Subflows can be defined as nodes for reuse
- Supports programming nodes (e.g., HTTP request, function)



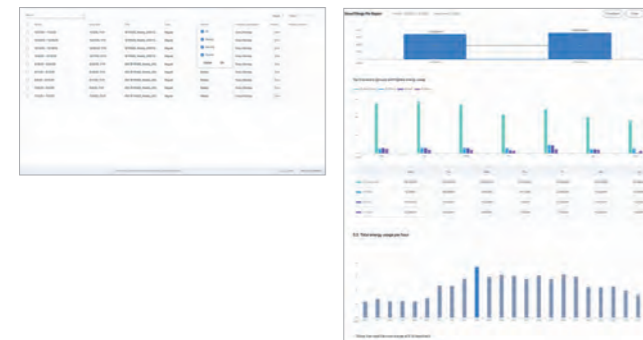
8 Reports

Regular Report / Instant Report

View and export reports that integrate key site operation data, including energy usage, air quality, and error status. Regular reports are available on a weekly, monthly, and yearly basis, along with ad-hoc reports for user-defined time periods.



Regular Report



Available on a weekly, monthly, or yearly basis

Instant Report



Provides an instant report for the period specified by the user

Device Status	Check the connected device items and quantities.
HVAC Operation Status	Check the daily runtime and utilization rates of HVAC devices.
Cold Chain Operation Status	Check the daily runtime and utilization rates of cold chain devices.
Display Operation Status	Check the daily runtime and utilization rates of display devices.
Energy Overview	Check daily/hourly energy consumption, cumulative energy usage, and production.
Air Quality	Check indoor comfort and air quality levels.

9 Analysis

Comparative Analysis

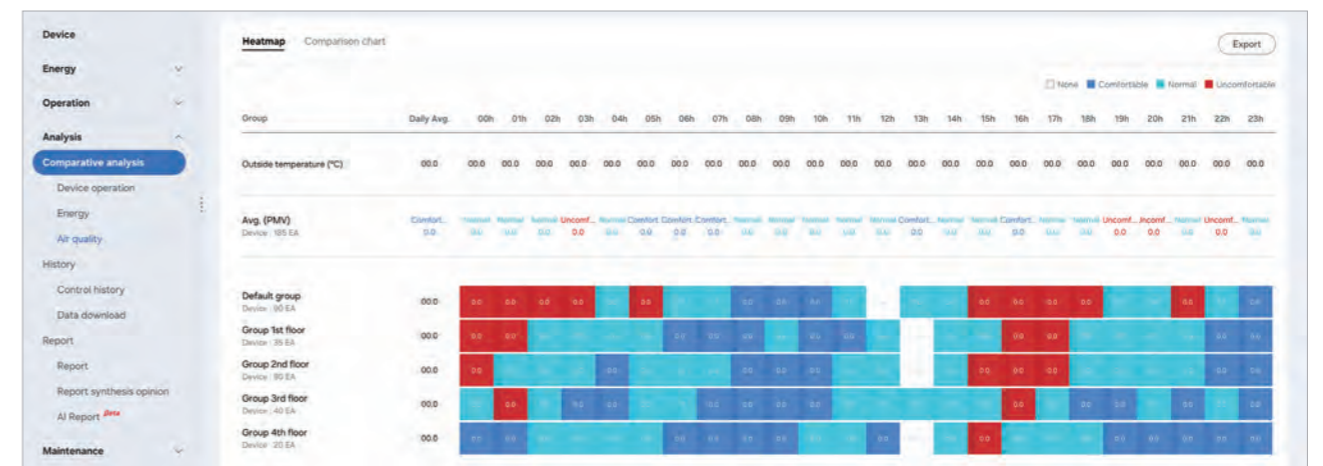
View trends in device operation, energy, and air quality data.

Device Operation



Running Rate	View the operating status of devices on a daily, weekly, monthly, or yearly basis.
Cool/Heat Operation Rate	View the cooling and heating operation rate of system air conditioners on a daily, weekly, monthly, or yearly basis.
Runtime	Check the operating hours of devices on a daily, weekly, monthly, or yearly basis.
Temperature	View the difference between the current temperature and the set temperature. Temperatures above the set point are displayed in red, and those below in blue, allowing easy visualization of the temperature distribution.

Air Quality



Comfort Level Trend	View comfort and thermal sensation trends on a daily, weekly, monthly, or yearly basis. Comfort and thermal sensation are calculated based on the international standard comfort index PMV (Predicted Mean Vote) defined in ISO 7730.
Air Quality Trend	View trends of overall cleanliness, fine dust (PM10), and ultrafine dust (PM2.5) on a daily, weekly, monthly, or yearly basis.

10 SmartThings Pro for Safety

Safer site management made possible with SmartThings Pro

Integrate real-time detection, data-driven risk prediction, and efficient site operations into one comprehensive safety management solution. Respond quickly to emergencies and enable end-to-end safety management - from accident prevention to cost reduction.

Real-time Risk Detection

- Real-time detection of emergencies
- Location-based notifications and SOS calls

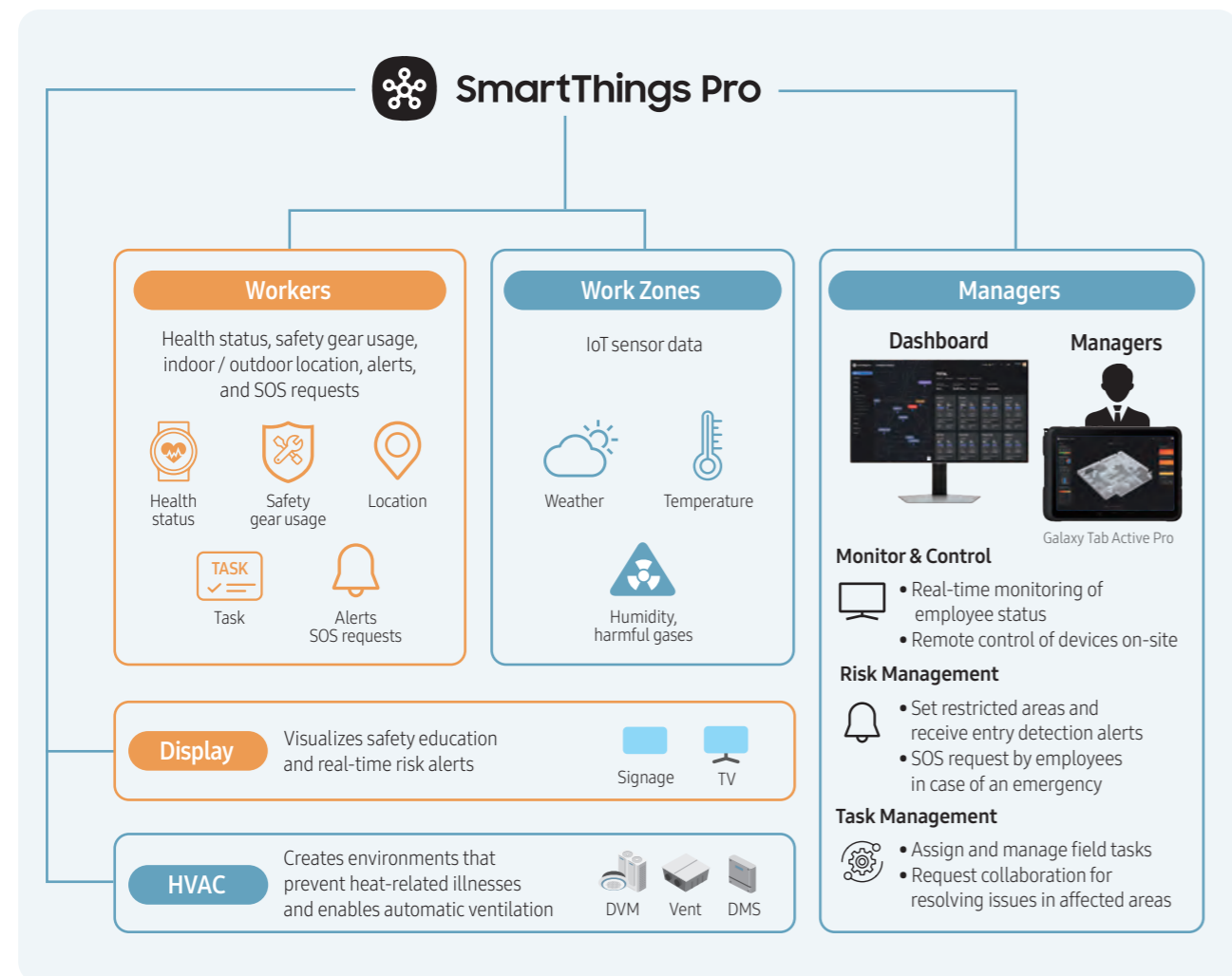
Data-driven Risk Management

Utilizes environmental

- Data collection and analysis through devices such as smart watches
- Creating a Comfortable Environment through Data-Driven Automatic Control

Operational & Cost Efficiency

- Provides easy and fast management solutions
- Reduces risk management and maintenance costs



Watch App for Workers

Notifications based on health and environmental information

Real-time alerts to supervisors and coworkers

Notifications based on activity and location data

Task assignment and progress tracking

Dashboard for Safety Manager

Outdoor location tracking

Admin dashboard (PC View)

Notifications for safety manager

Indoor location tracking


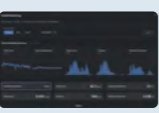


Admin dashboard (Tablet)

Work flow management

Employee Health Monitoring and Environmental Improvement

Heat alerts

Monitors heat conditions and provides step-by-step notifications.

- 1 Data Collection**

 Skin temperature and ambient temperature/humidity
- 2 Threshold Detection**

 Three-stage alerts (Caution / Warning / Danger)
- 3 Notifications by Level**

 Sends alerts to both workers and safety managers (Warning / Danger)
- 4 Action Execution**

 Activates air conditioning and provides rest guidance to workers

Restricted Area Entry Detection

Alerts using Watch/Display

- 1 Set Restricted Areas**

 Configure indoor and outdoor restricted zones
- 2 Entry Detection**

 Detect unauthorized entry into restricted areas
- 3 Device Alerts**





 Send alerts to digital signage and smartwatches
- 4 Action Execution**

 The safety manager issues a warning to the intruder via phone

Risk Management through quick emergency response




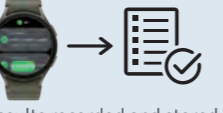
Accident Response (e.g., Falls)

Immediate risk control through real-time alerts and communication

- 1 Fall/Drop Detection**

 Alerts sent to safety manager and nearby coworkers
- 2 Alert Notification**

 Alerts sent to safety manager and nearby coworkers
- 3 Worker Contact & Verification**

 Direct call to the worker's watch
- 4 Action**

 Dispatch ambulance and provide response guidance

Issue Response in Affected Areas

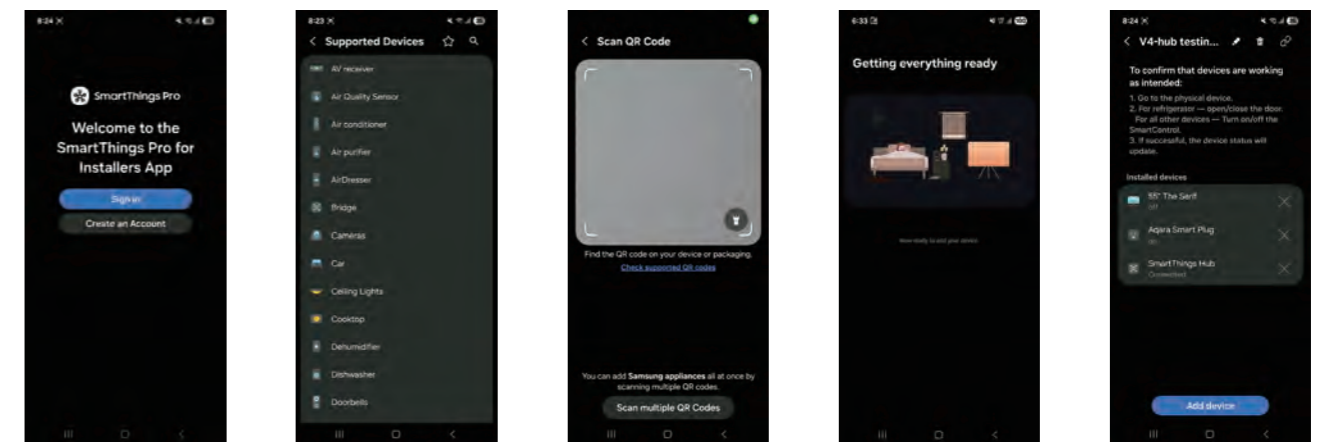
Task management based on the workers location

- 1 Service Request**

 Alerts sent to safety manager and nearby coworkers
- 2 Nearby Identify staffs nearby Location Identification**

 Alerts sent to safety manager and nearby coworkers
- 3 Task Assignment**

 Task details sent to the worker's watch
- 4 Task Completion**

 Results recorded and stored

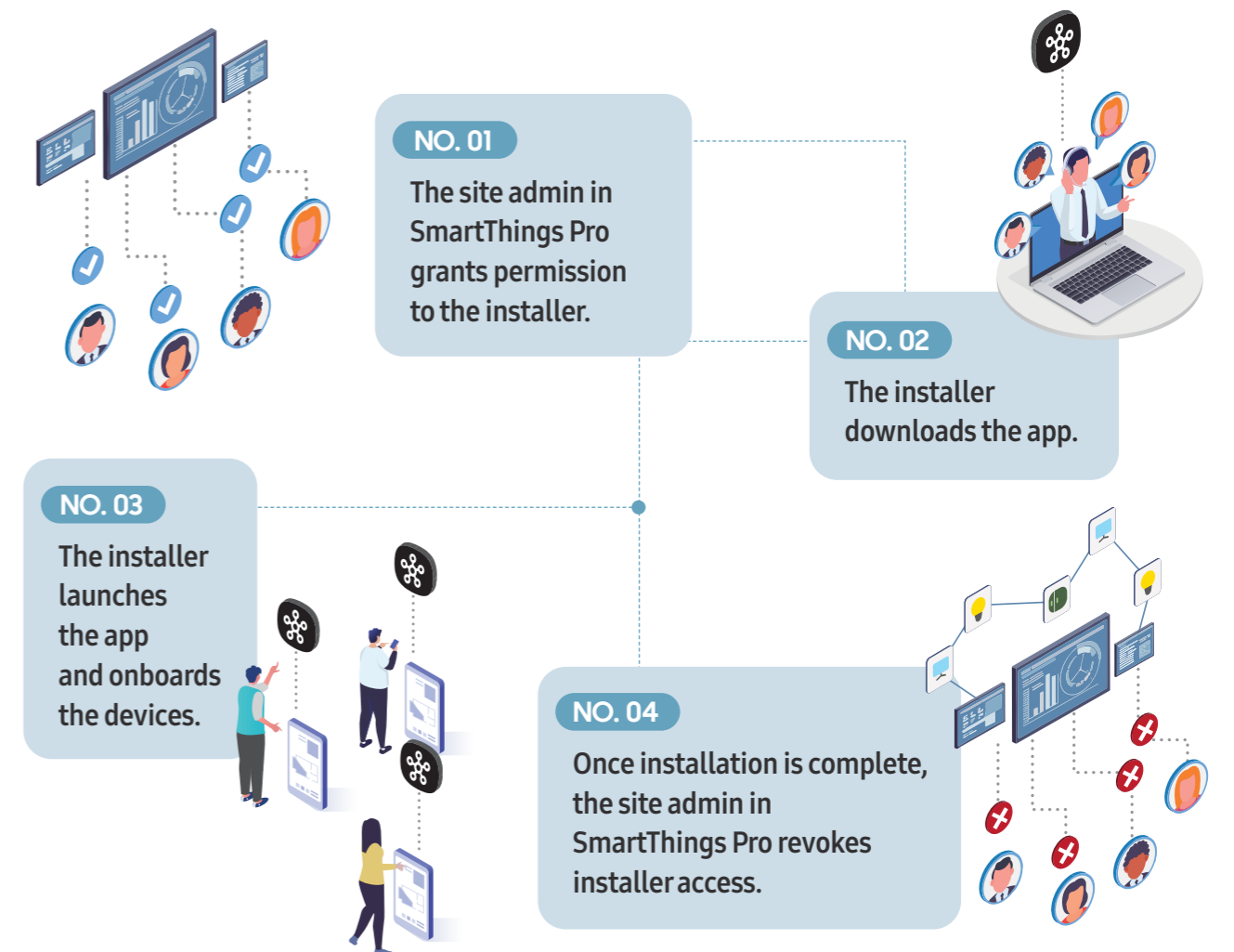
11 Application for Installers

SmartThings Pro for Installers

Seamlessly connect devices to SmartThings Pro, or partner platforms integrated with Enterprise API using SmartThings Pro for Installers App. Devices can be added either by searching with the model number or by scanning a QR code.



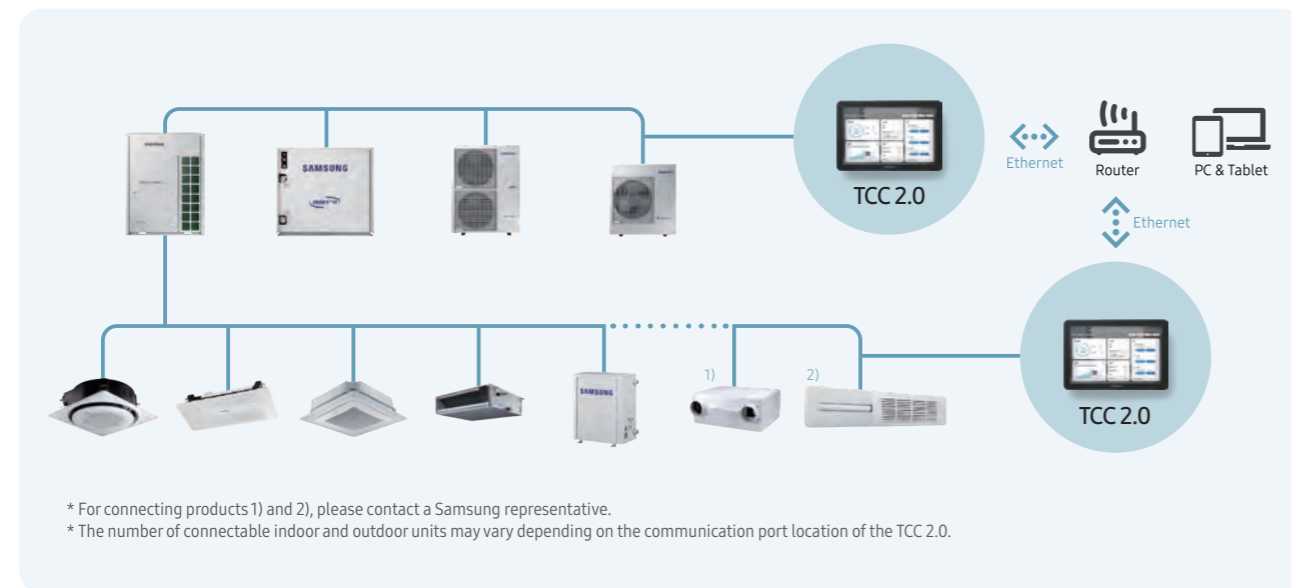
* Supported only on Android mobile and tablet devices (iOS not supported)



12 Supported Devices

Touch Centralized Controller 2.0

Features a customizable design that blends naturally with surrounding interiors, allowing you to freely change the background image to any desired picture.



* Background images support PNG, GIF, and JPG formats. (resolution 1,200×800, maximum 10MB)

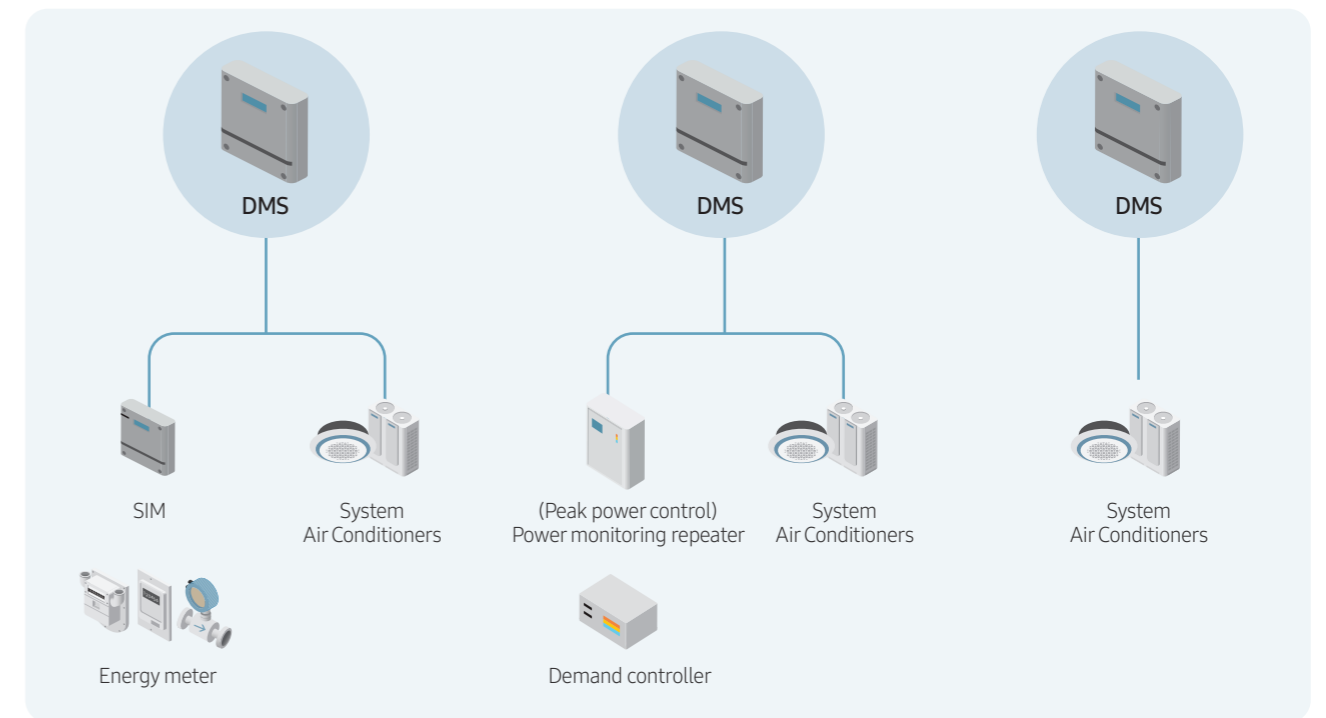


Model Name		ACM-A300BN*	
Size	Display Size	215.2 × 134mm (Bezel size 15 mm)	
	Display Resolution	1,280 × 800 px (253.5mm TFT LCD)	
Maximum Connected Indoor Units		128 units	
Connection Terminals		Outdoor unit – Indoor unit (F1/F2) / Outdoor unit – Controller (R1/R2)	
Hardware	Power Supply	DC 12V Adapter provided (AC 100-240 V, 50/60 Hz)	
	Memory	RAM / Flash 3 GB / 16 GB	
	DI / DO	2 channels / 2 channels	
	SD Card Slot	1 Micro SD	
	RJ45 (LAN)	1 LAN (1 Gbps)	
	Number of Ports	2 ports	
	External Ports	RS485 (NASA)	Indoor F1, F2 Communication Per port : 1 set of outdoor units (up to 4 units per module), maximum 64 indoor units Total ports : 2 sets of outdoor units (up to 8 units per module), maximum 128 indoor units
			Indoor R1, R2 Communication Per port : Up to 16 outdoor units (up to 16 units per module), maximum 128 indoor units Total ports : Up to 32 outdoor units (up to 32 units per module), maximum 128 indoor units
	Functions	Energy Management	●
		Power Consumption	●
Air Quality Management		●	
Expandable Devices	Devices (Access via Local Network)	PC / Tablet	
	Supported Browsers	Web (Chrome)	

* Product features and specifications are subject to change without notice for product performance improvements

Data Management Server 2.5

A comprehensive control system that facilitates the operation and management of multiple VRF units, data storage, peak power management, and precise power distribution.



- VRF control/monitoring**
Control and monitor up to 256 indoor units, manage error logs, and provide user-specific security level features.
- Schedule control**
Weekly/daily repeat schedule settings for up to 256 scheduled automated tasks, with query options for scheduled control history.
- Built-in web server functionality**
Enables remote control and monitoring through a web browser using the built-in web server.
- Power / gas consumption distribution**
Measures air conditioning system usage to allocate electricity (EHP) and gas (GHP) consumption. Supports up to 256 indoor units and stores one year of data.
- Logic control function**
Allows for creation and editing of control logic to operate indoor units in a variety of conditions.
- Peak power control**
Efficient power consumption management with priority control, configuration of two operation modes, and simultaneous peak control for all indoor units in a building.
- Automatic mode switching operation**
Automatically switch between cooling and heating modes during in-between seasons, such as spring and fall, to efficiently maintain optimal indoor temperatures.



Model Name	AIM-D01AN	
Dimensions (W×H×D)	240 × 255 × 64.8 mm	
Power supply	12Vdc 3A	
Communication type	Supported protocol	NASA protocol
Communication ports	VRF Communication (RS-485)	5 port
	Ethernet (10/100Mbps)	1 port
I/O (Default)	DI	10 channels (Dry Contact)
	DO	8 channels (12Vdc)

B2B Display

With a display that offers exceptional visibility and durability, SmartThings Pro can deliver clear and powerful business messages through vibrant and dynamic content.

Smart Signage (Standalone)

A single-panel display that captures attention with outstanding durability and sharp image quality, suitable for a wide range of indoor spaces from retail stores to public areas, corporate offices, and meeting rooms.



Vivid clarity with powerful 4K



Slim three-sided bezel-less design

Hotel TV

Deliver customized in-room entertainment experience for guests during their stay.



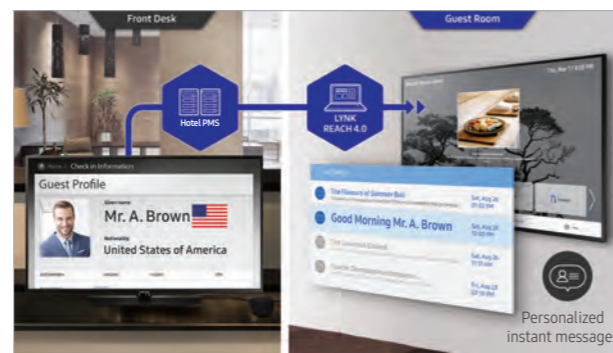
User-friendly customizable home menu



Enhanced Security and Powerful Graphics Performance



Integrated Content Management Solution for Enhanced Hotel Management Efficiency



Offer a unique experience with personalized services

Galaxy Watch

With powerful performance and sophisticated design, Galaxy Watch actively responds to various work environments, from real-time control to business notifications.

Galaxy Watch Ultra

Galaxy Watch Ultra delivers reliable performance even in cold weather or at high altitudes, and the 86dB siren enables rapid response in emergencies. With durable titanium construction and robust design, Galaxy Watch is well-suited for various work environments, providing practical support on-site and in daily operations.



Emergency siren function for safety



Reliable performance in cold environments and at high altitudes

Galaxy Watch 8 / Galaxy Watch 7

Galaxy Watch 8, with its powerful performance and intuitive display layout, is the optimal smartwatch for maximizing efficiency and focus.



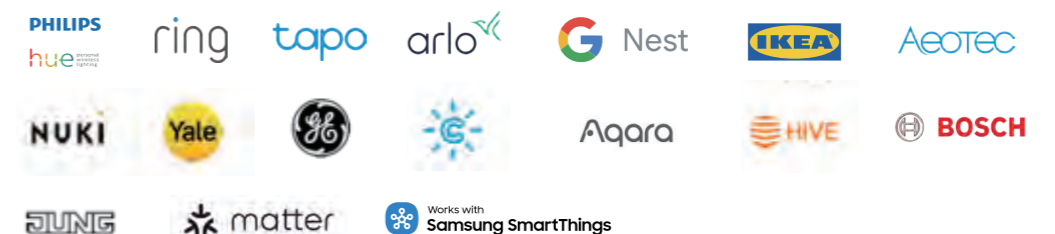
Powerful 3nm processor delivers faster processing speeds and improved energy efficiency



Dynamic lug system ensures a snug fit for enhanced wearing comfort

SmartThings Supported Devices

Supports 57+ connected SmartThings devices, spanning all areas of daily life.



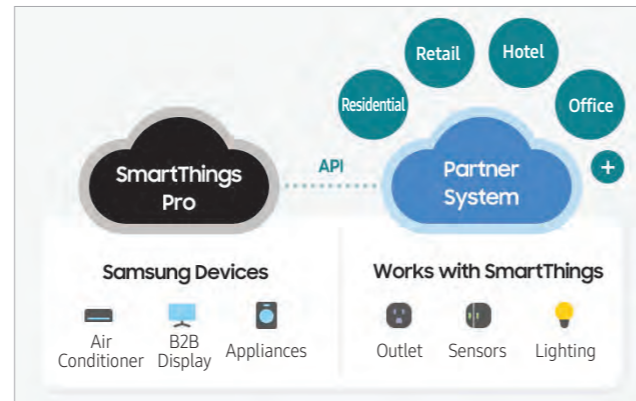
13 Enterprise API

Partner Integration through Enterprise API

Standardized APIs enable integration across diverse business environments, improving system implementation, business management, and operational efficiency.

Key Benefits of Enterprise API Integration

- Enhances Partner Product Development Efficiency
 - Shortens the software development process to reduce time to market
- Expands Partner Device Ecosystem
 - Integrates with various global IoT brands such as Samsung Electronics and others
- Improves Partner Management Convenience
 - Eliminates silos from fragmented management systems or platforms



Enterprise API Usage Guide

Partners can connect their platforms by following the API integration guide available on the Enterprise API developer site.



Enterprise Key Features

By integrating the API into the partner's platform, SmartThings Pro IoT services can be provided.

Smart Device Control

Device Diagnostics

User Access Management

- Remotely monitor and control SmartThings-enabled devices
 - Create and run automations using IF / THEN conditions
 - Receive alerts when Samsung devices need repairs or have issues
 - Check warranty information of faulty devices
 - Invite resident & guest users to control devices in SmartThings app
 - Revoke resident & guest user access after move-out & check-out
- * Diagnostics feature is currently available for SmartThings enabled Samsung appliance & HVAC

14 License Configuration

Tailored Licenses for Every Business Environment

With two license options, Basic and Advanced, users have the flexibility to choose and apply the license that best fits their business needs and operational goals for each space.



Features		Basic	Advanced
Device management	Remote control	●	●
	Schedule and rule based automation	●	●
	Logic editor enabled automation	-	●
Energy management	Energy monitoring and AI Energy Mode	●	●
	Energy saving solutions	-	●
Integrated management	Widget dashboard	●	●
	Multi-site management	-	●
Analysis	Interactive View	-	●
	Operation status and report	●	●
Safety	Alert & action management	●	●
	Setting of safety device	●	●
	User management	●	●
	Basic alerts (SOS, Fall, Heart rate monitoring)	●	●
	Additional alerts (Entered restricted zone, Heat monitoring)	-	●
	Task management	-	●
Developer tool	Zone management	-	●
	Device API	●	●

03

Vertical Scenario

We create efficient spaces with smart solutions optimized for each industry environment.

AI Retail



- **Multi-site management** - Integrated operation
- **Energy management** - Energy saving solutions
- **3D Interactive view** - Intuitive user interface

AI Office



- **Meeting room automation** - Integration with meeting room system and local controller
- **Energy management** - Energy saving solutions

AI Stay



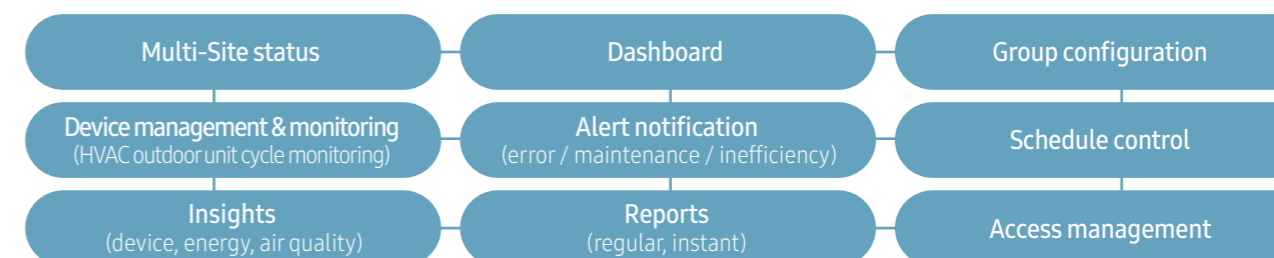
- **Energy management** - Energy saving solutions
- **Guest room experience** - Guest in-room IoT experience
- **Automation** - Room service / housekeeping via robot

AI Residence



- **Regular report** - Analysis & report for property management
- **Senior care** - Watch integration scenario

Key Features



AI Retail

Multi-site Management

“

Is it possible to manage multiple stores at once and assign a manager to each store?

”

“

The system includes a multi-site admin account for managing all stores, as well as site admin and site manager accounts for individual store level.

”



NO. 01

An administrator who needs to manage multiple stores can create the required sites through a Multi-Site Admin account.

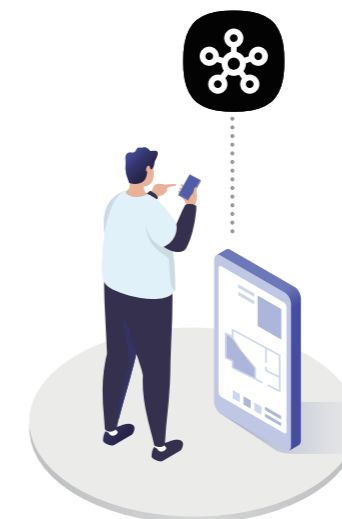
NO. 02

Multi-Site Admin can also designate additional site-specific Admins who will manage each individual site.



NO. 03

For each store in operation, Site Admins and Managers can be granted permission to use the SmartThings app, enabling a smooth and efficient store management environment.



AI Retail

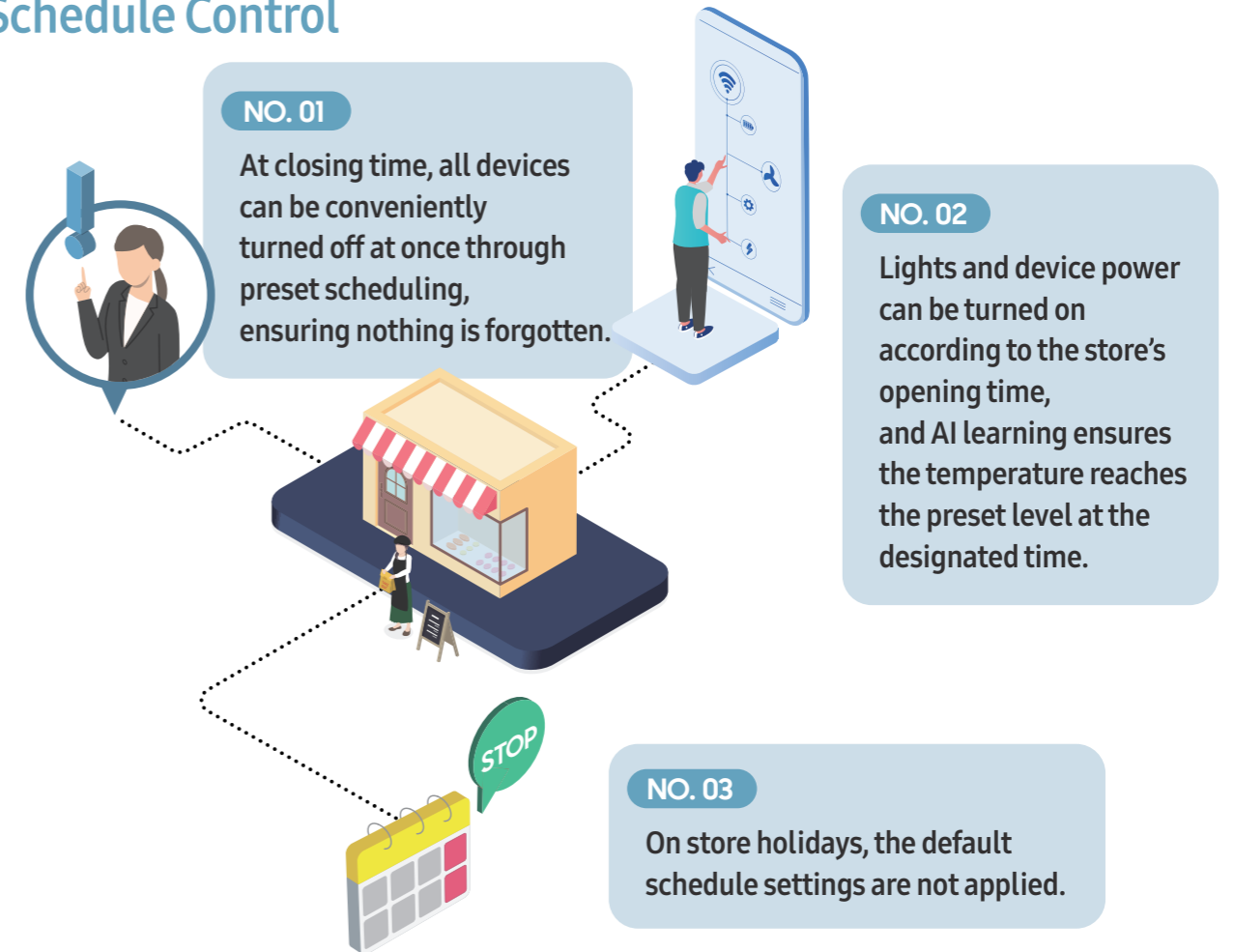
“ Can we reduce the repetitive tasks required when preparing a store? ”

Autonomous Operation

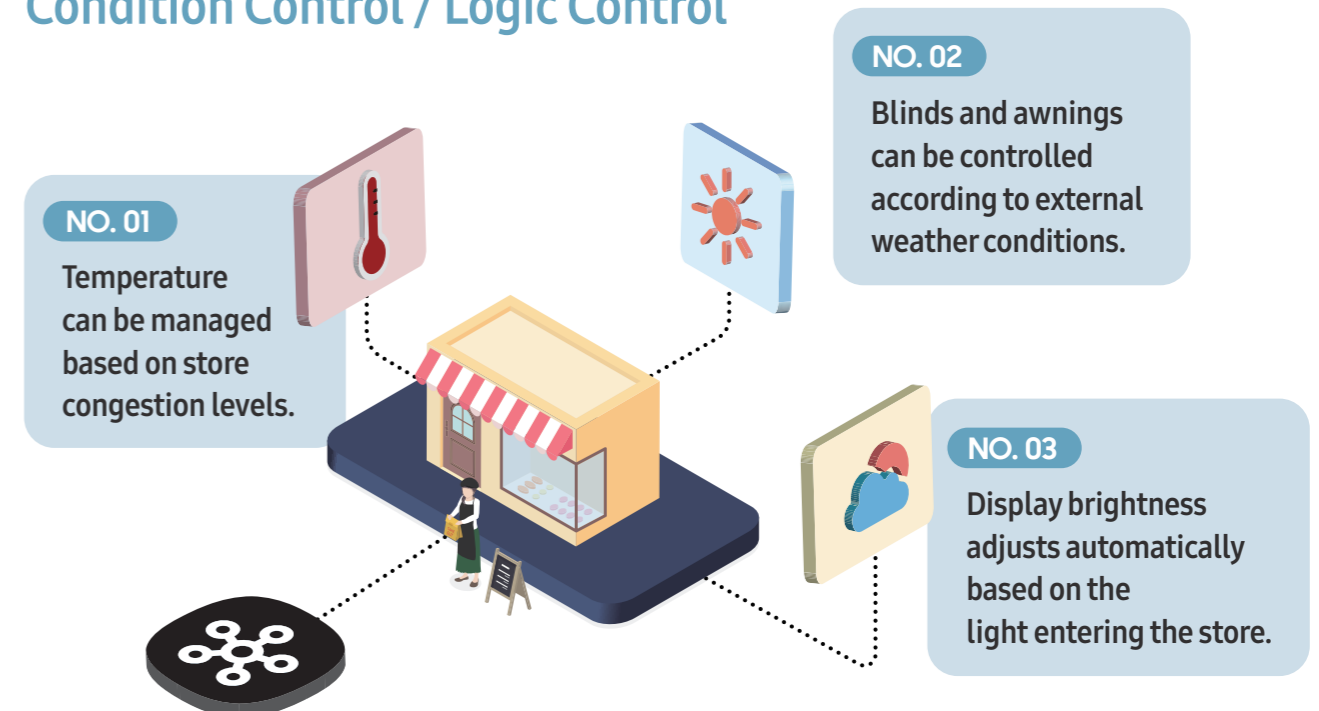
“ Repetitive tasks can be reduced through schedule control based on specific times, as well as condition-based and logic-based control. ”



Schedule Control




Condition Control / Logic Control



AI Office

“ There are so many devices in the office that it’s hard to control them just by their names! ”

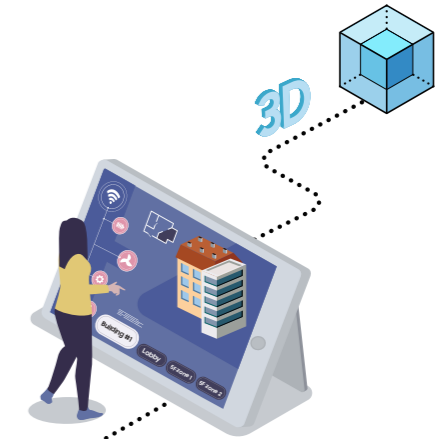


3D Map View

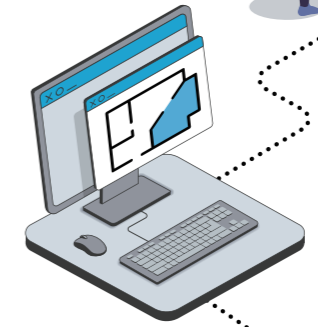
“ Try controlling devices on a map converted from a 3D model that reflects your actual business space. ”



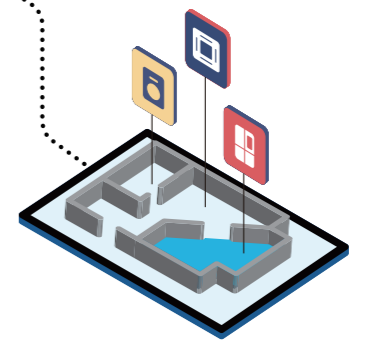
NO. 01
Create groups from physical floor or zone where 3D interactive layout is needed.



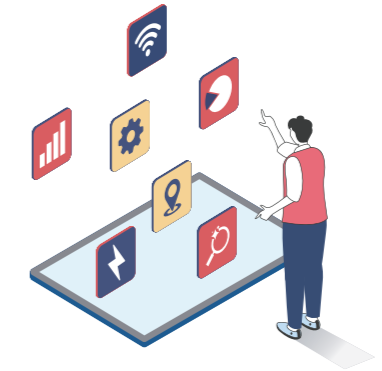
NO. 02
Using Interactive View, render a 3D interactive layout from each group.



NO. 03
Devices can be placed on the generated drawing according to their actual physical locations.



NO. 04
By placing widgets on both sides, access information needed for device control.



NO. 05
By selecting each device icon, check detailed information and control the device.



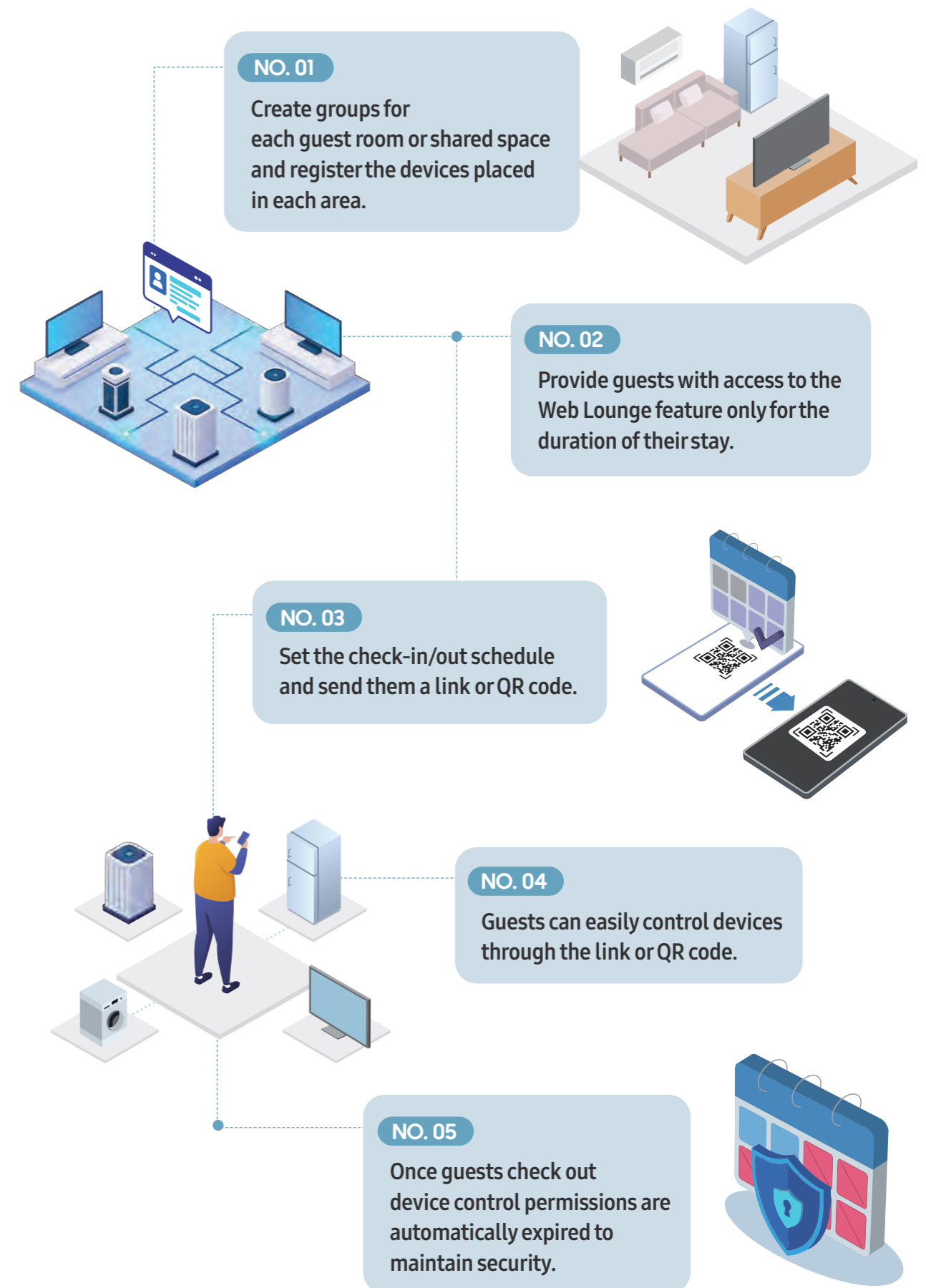
AI Stay

In-room Device Control

“

Guests can conveniently control devices in their room without creating an account or installing a mobile app. They simply access the link or QR code generated by the administrator.

”



AI Residence

“
Can device maintenance in multi-family housing be made more convenient?
”



Regular Report

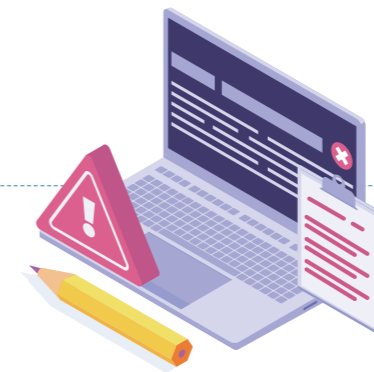
“

With regular reports, you can routinely review device usage status, and when a malfunction occurs, notifications provide error codes to help reduce repeat visits by service technicians.

”



NO. 01
Weekly, monthly, and quarterly reports allow you to manage device operation status, inspection records, air quality data, and more.



NO. 02
When an error occurs, an error code and troubleshooting guide are provided, helping reduce the rate of return visits from technicians.

NO. 03
If you are using a maintenance service (separate partner contract required), notifications are also sent to the partner when a malfunction occurs, enabling faster service support.



AI Residence

“

How can technology help manage a senior's health and respond to emergencies?

”



Senior Care

“

By using a smartwatch, health information can be monitored and real-time alerts can be received for emergencies such as SOS requests, abnormal heart rates, or temperature-related risks.

”



NO. 01

Administrators map the smartwatch and actual user information in SmartThings Pro.

NO. 02

Health data and alerts monitored by the smartwatch are sent to the administrator in real time.



NO. 03

In an emergency, the current location can be tracked via GPS, and if BLE* tags are installed indoors, indoor location can also be determined.

* BLE : Bluetooth Low Energy

04

References

Partnerships built on technology and trust are coming together to turn the future of smart spaces into reality.



Modular Training Facility of Samsung Electronics

The modular construction method, which dramatically shortens the building process, is emerging as a new alternative in the construction industry and continues to gain traction in both domestic and international markets. Modular construction involves assembling prefabricated modules produced in factories, making it easier to apply IoT solutions such as heating and cooling systems, and thus suitable for various types of facilities. The Samsung Electronics Modular Training Facility was established through the design of SAMOO Architects & Engineers, the manufacturing by Yuchang E&C, and the construction by Samsung C&T. By integrating Samsung's business solution, SmartThings Pro, the facility provides employees with an optimized and intelligent user experience.

* To use SmartThings features, installation of the SmartThings app, device registration, and a wireless network connection are required.
* The SmartThings app may not be compatible with certain tablets or devices, and some functions or connected devices may be limited.
* SmartThings support, compatible environments, and specifications may vary depending on the product.

Modular Construction with IoT Solutions

The modular construction method, which assembles factory-manufactured modules on-site, not only shortens the building process but also enhances construction quality by integrating IoT systems from the design stage.



Automated Routines

With SmartThings Pro, users can freely control IoT devices throughout the facility—such as lighting, heating, and cooling—creating a user-centered and smart learning environment.



Education-Specific Devices

By integrating Flip Pro interactive displays with various connected devices, instructors and trainees can easily exchange feedback during sessions, significantly improving learning efficiency.



This is Jeju Apple Mango & Citrus Farm – Smart Farm

Climate change is rapidly transforming Korea’s agricultural landscape. As the number of farms cultivating high-value subtropical crops increases, smart farming technologies that enable the production of premium-quality fruits are gaining significant attention. Located in Seogwipo, Jeju Island, the This is Jeju Apple Mango & Citrus Farm has implemented Samsung’s IoT solution, SmartThings Pro, along with a Samsung system air conditioner, to build a convenient and efficient cultivation environment. Spanning approximately 20,500 square meters, this large-scale farm serves as a successful example of how precise temperature and humidity control and energy-saving technologies can help produce top-quality fruits.

* To use SmartThings features, installation of the SmartThings app, device registration, and a wireless network connection are required.
* The SmartThings app may not be compatible with certain tablets or devices, and some functions or connected devices may be limited.
* SmartThings support, compatible environments, and specifications may vary depending on the product.

Simple and Smart Remote Control System

With SmartThings Pro-enabled tablets, farm managers can monitor real-time conditions and freely adjust temperature, humidity, and device operations for convenient and efficient control.



AI-Based Automation Routines

AI learns user patterns to automatically maintain optimal indoor temperatures, enabling consistent cultivation of high-quality crops at all times.



Efficient Energy Management Solution

Along with high-efficiency indoor units, AI intelligently adjusts the outdoor unit’s power according to real-time conditions, enhancing energy efficiency while reducing operational burden.



AI Residence

Jack Nicklaus Golf Village Eco-friendly House

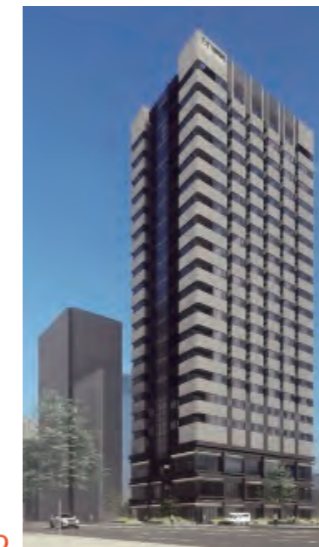
- **Use case** Property IoT management
- **Products** SAC, Home Appliance, TV, SmartThings, eX-Home Dashboard, HVAC, Home Signage



AI Stay

Co-living Space : Episode Yongsan 241

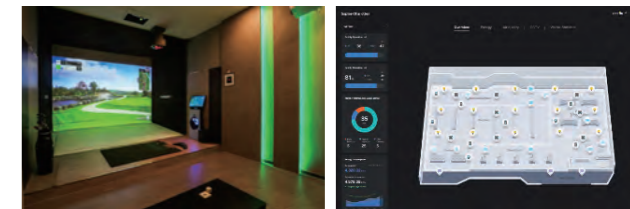
- **Use case** Energy Monitoring and Operational Efficiency
- **Products** Refrigerator, Washer, Induction, SAC, SmartThings Pro



AI Retail

Indoor Golf Franchise

- **Use case** In-store device integrated management
- **Products** SAC, Home Appliance, TV, SmartThings, eX-Home Dashboard, HVAC, Home Signage



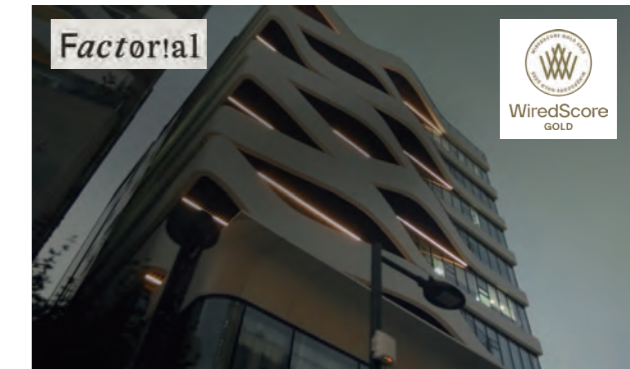
Set automation modes using lighting

Monitoring & control of devices, Energy consumption monitoring

AI Office

Smart Co-working Space : Factorial Seongsu

- **Use case** Building management via SmartThings Pro + b.IoT integration
- **Products** HVAC, b.IoT Solution, SAC, Refrigerator, AirDresser, Signage, Harman Pro, and more



05

FAQ

We've compiled essential questions and answers to help you deeply understand SmartThings Pro—from product usage to technical integration.

Understanding SmartThings Pro

Q. What is SmartThings?

SmartThings is Samsung's Internet of Things (IoT) platform and app that allows users to remotely manage and control compatible smart appliances. It also integrates with SmartThings-certified third-party devices, creating a richer and more connected IoT environment. In addition, users can experience a more convenient smart life through SmartThings specialized services—such as Energy, Food, Air Quality, and Pet Care—available to everyone free of charge.

Q. What is SmartThings Pro?

While SmartThings is a B2C IoT solution available to all users, SmartThings Pro is a paid IoT platform designed specifically for B2B customers. It can be applied to various types of buildings, including residential complexes, commercial properties such as hotels, offices, franchise stores, and educational facilities.

Through SmartThings Pro, users can remotely control all connected devices in residential buildings—such as apartments—using a single app, while integrating multiple services for a seamless smart living experience. In shared or rental housing, SmartThings Pro enables centralized management and monitoring, enhancing the smart home experience for residents. For business facilities, an intuitive dashboard allows efficient multi-site and individual building management, helping streamline operations. Additionally, SmartThings Pro provides dedicated B2B accounts and a professional device installation program to support business integration and scalability.

Q. Is SmartThings Pro safe in terms of security?

SmartThings Pro is built on the Microsoft Azure Cloud and has obtained CSA STAR Level 2 certification, ensuring enhanced security and reliable data protection. * Cloud Security Alliance

License Information

Q. If I want to register a new device to replace an existing one, can I use the same license?

Yes, you can. Licenses are based on the total number of currently registered devices. Please delete the existing device first, and then register the new device to use the license.

Q. Can I check the remaining period of my license?

You can check it under System Settings – License Management. If you purchase a new license, the usage period will be extended. Devices not included in the license will not be displayed on the dashboard. If you want to use more devices than the number specified in your license, you will need to purchase additional licenses.

Dashboard Differentiation Features

Q. What are the seven advanced features of SmartThings Pro Advanced?

- 1. High-Efficiency Operation Control:** This control technology improves operational efficiency by predicting indoor load using indoor operation data and controlling refrigerant evaporation temperature and compressor current.
- 2. Inefficiency Detection:** Detects inefficient operations caused by time, space, or human errors and provides alarms and corrective actions through the solution.
- 3. AI Comfort Control:** Analyzes existing operation patterns and real-time environmental data to prevent overcooling or overheating.
- 4. Pricing Response Control:** Adjusts indoor temperature and outdoor unit performance according to time-of-use electricity rates, reducing energy consumption and operating costs.
- 5. Energy Consumption Prediction (Schedule-Based Operation):** Predicts energy consumption based on schedule-driven operation and any changes in set parameters (e.g., temperature).
- 6. Energy Distribution:** Distributes energy consumption to tenants (zones, rooms, departments, etc.) based on the heat processed by devices, supporting detailed consumption analysis.
- 7. Pre-Heating and Pre-Cooling:** Controls operation to reach the set temperature at the designated time based on learned operation data (temperature changes, setpoint history), optimizing runtime.

Q. What are the benefits of using the logic control feature of SmartThings Pro?

It allows you to easily create complex automation scenarios using a graphical interface—scenarios that cannot be implemented with basic condition-based controls.

Q. What are the advantages of SmartThings Pro Web Lounge control?

Even if the mobile phone does not have the SmartThings app installed, users can simply scan a QR code and use it with a Look & Feel similar to the SmartThings app, without installing anything. Technically, this is provided through the web browser that comes pre-installed on the mobile device.

Q. What widgets are currently supported?

We provide 86 widget cards across six categories (Operations / Energy / Air Quality / Environmental Information / Safety / Notification). For details, please refer to page 16 (④ Custom Dashboard Widgets).

Q. Are automations created on the dashboard synchronized with the SmartThings app?

Automations created on the dashboard are not synchronized with the SmartThings app. (Each platform supports different devices.)

Enterprise API Guide

Q. What is an API?

API stands for Application Programming Interface.

It is a set of rules that enables communication between different types of devices.

For example, by using an API, the SmartThings app can control and manage products from other companies. Conversely, apps from other companies can use Samsung's API to control and manage Samsung products.

Q. Is there a procedure for 3rd party companies to use the Enterprise API?

Yes. First, register on the Samsung Developer Site. (<https://developer.smarthings.com/docs/api/public>)

The site allows you to create projects and provides developer documentation on how to use the API.

Q. What is the Enterprise API?

The Enterprise API is designed specifically for managing residential and commercial buildings composed of multiple units or generations. For example, in a rental housing building, the Enterprise API can be integrated with the Property Management Software (PMS) used for building operations. This allows administrators to control smart devices in vacant units or immediately detect device malfunctions through the integrated PMS, enabling unit management based on IoT technology.

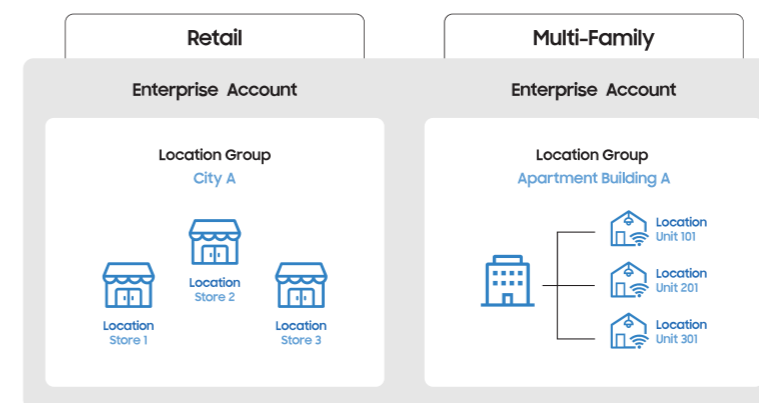
Q. What are Location Group, Location, and Room?

Location Group, Location, and Room are structural elements of the Enterprise API designed to reflect real-world spaces.

In software integrated with the Enterprise API, these units serve as the basic building blocks for controlling devices, receiving fault notifications, and other functions.

Location Group can be mapped to a building in the real world. Location represents a unit or floor within the building.

Room corresponds to individual rooms or units within a floor or apartment.



If you have any further questions regarding solution adoption, installation, or usage, please contact us at the email below.
stpro.kr@samsung.com