



The Wall

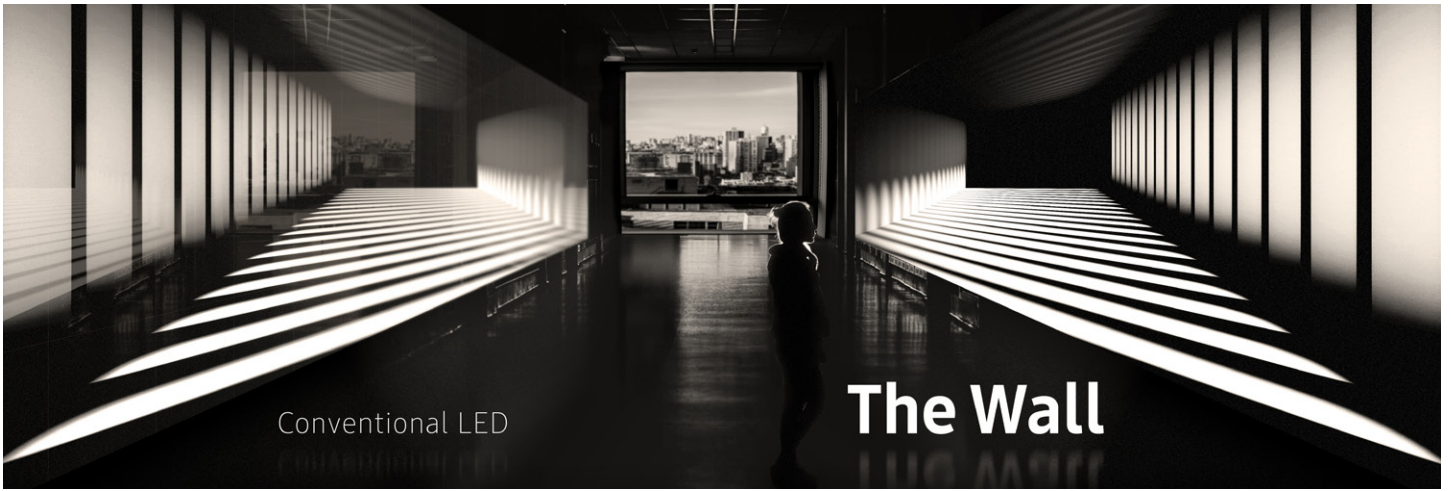
See the Greatness

Highlights

- Perfect black in all ambient lighting with a unique ultra-low reflection black technology
- Superior color purity with an innovative color enhancing LED chip technology
- LED HDR and HDR 10+ support for optimum peak brightness and accurate grayscale expression.
- Flexible modular formation that is customizable according to spatial and aesthetic needs
- Sleek, seamless surface to complement various luxury environments
- Durable shock-resistance technology with higher energy efficiency

The Wall is a next-generation display redefining what it means to deliver a one-of-a-kind visual experience. With perfect black and pure colors, users will experience the magnitude of The Wall's picture quality, while its radiant design is a perfect fit for any luxury space—a high-end hotel lobby, museum or VIP stadium suite—enhancing the environment's beauty, sophistication and elegance. Ultimately, Samsung has created a truly innovative and opulent display that will change the future of display technology.

SAMSUNG

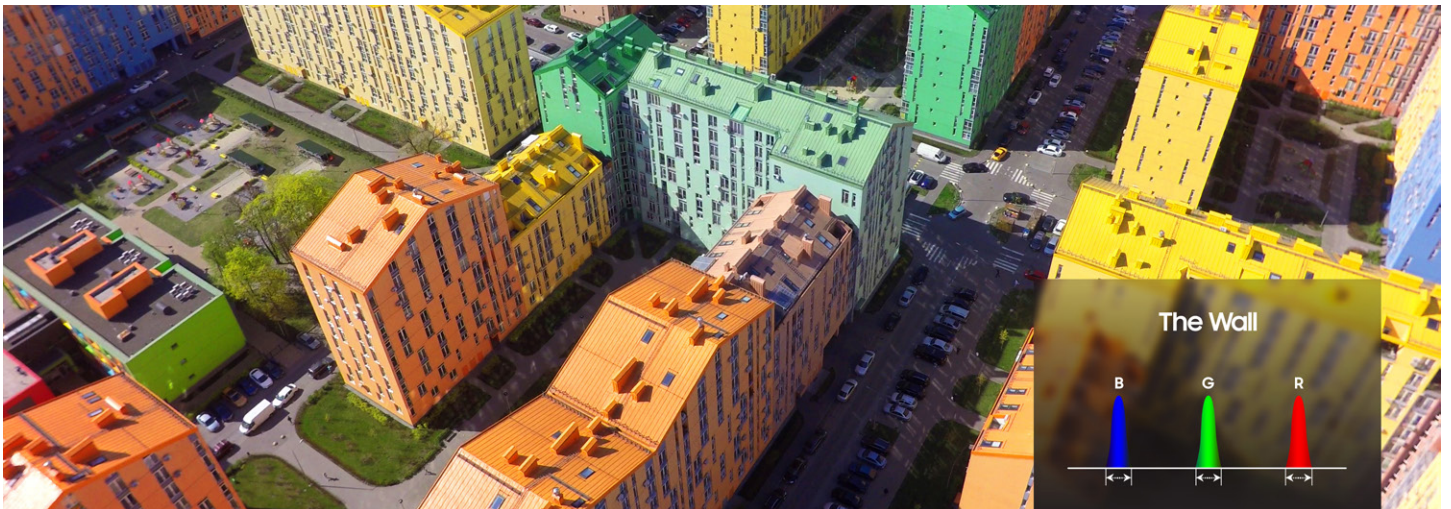


Conventional LED

The Wall

Great Black

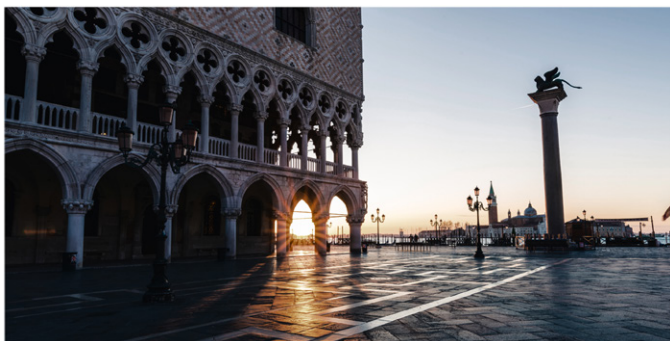
While conventional LED displays deliver advanced black levels in dark environments, The Wall presents perfect black in all environments, bright or dark alike. This is the outcome of an exceptionally black base coupled with a unique ultra-low reflection black technology, resulting in unparalleled contrast and detail.



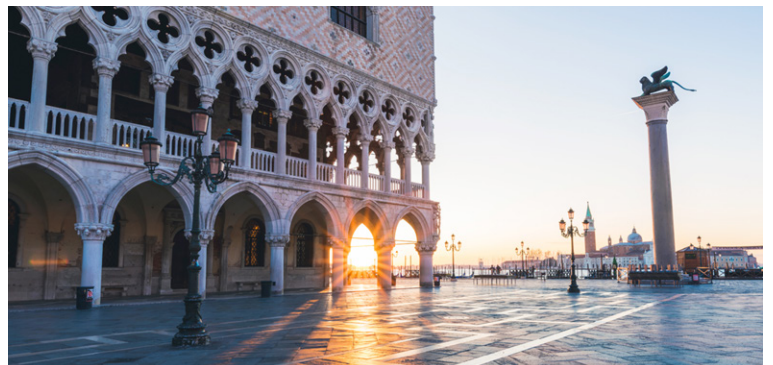
Great Color

The implementation of a new color enhancing LED chip technology produces extremely accurate color representation. With a narrower wavelength of light reducing the total area for mixing colors, The Wall delivers superior color purity over conventional LEDs for vivid, yet natural color expression.

SDR

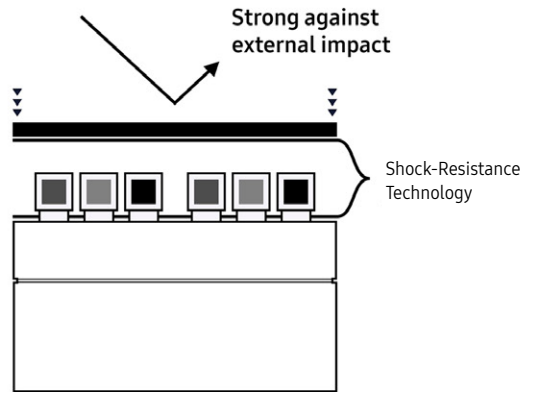


HDR



Great Refinement

Powered by Samsung's industry-leading picture quality engine, The Wall renders crystal clear and true-to-life imagery. Advanced HDR technologies, such as LED HDR picture refinement and HDR10+ support, with scene adaptive capabilities discretely optimize picture quality scene-by-scene through enhanced peak brightness and extremely accurate grayscale expression.



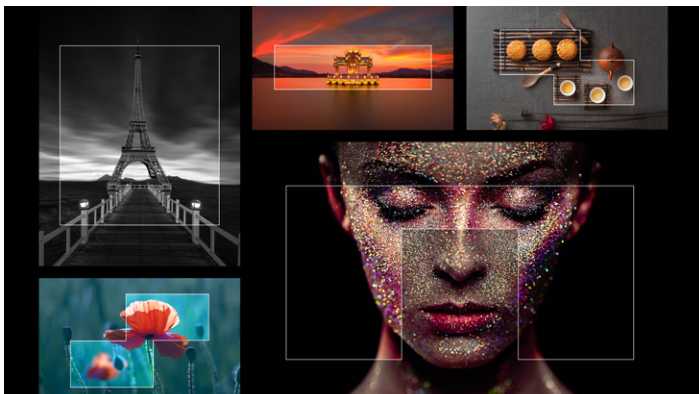
Great Performance

Samsung's advanced shock-resistance technology ensures the highest level of durability for The Wall with resilience against static electricity, dust and humidity. Furthermore, an advantageous heat dissipation design allows the displays to have higher energy efficiency than conventional LEDs.



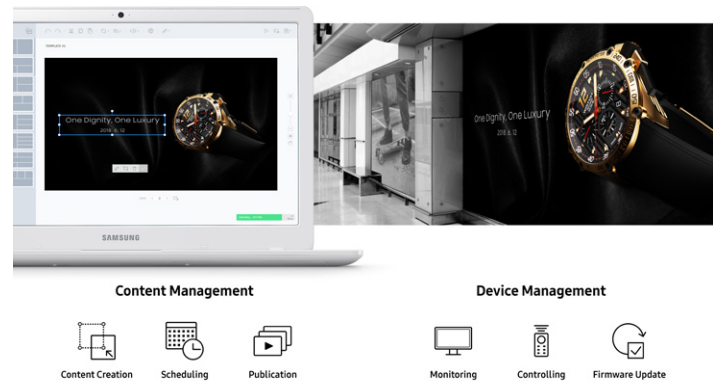
Great Look

The Wall boasts luxury not only in performance, but also in design. Its slim depth and sleek, seamless surface make it a refined and sophisticated complement to any upscale setting such as a museum, VIP stadium suite and corporate or hotel lobby.



Modular Creativity

The modular formation of The Wall gives creative flexibility to customize the design of the display according to spatial and aesthetic needs, breaking free from the restriction of the standard 16:9 screen format.



The Total Solution

With MagicINFO, a comprehensive content management solution, users can create, schedule and publish content across a single display or an entire display network. Remote management capabilities also enable monitoring and control of devices to conveniently prevent or troubleshoot errors without being near the display.

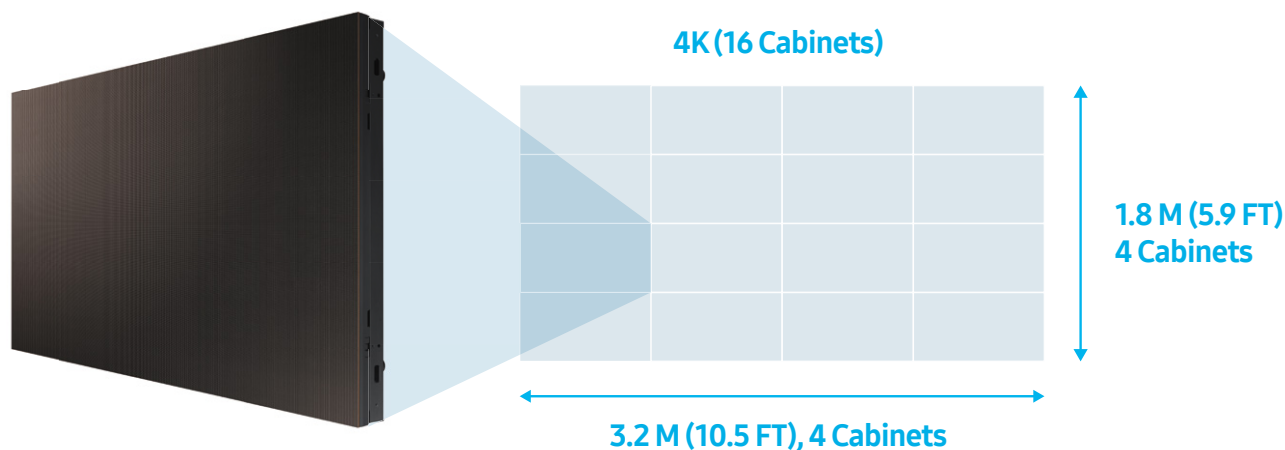
Specifications

			The Wall
Physical Parameters	Dimensions (W x H x D)	UHD Screen	3225.6 x 1814.4 x 72.5 mm 126.99 x 71.43 x 2.85 in
		Cabinet	806.4 x 453.6 x 72.5 mm 31.75 x 17.86 x 2.85 in
	Weight	UHD Screen	188 kg / 414 lbs
		Cabinet	11.8 kg / 26 lbs
Optical Parameters	Resolution		3840 x 2160
	Aspect Ratio		16:9
	Contrast Ratio		20,000:1
	Brightness	Peak	1,600 nit
		Max	500 nit
	Frame Rate		60 Hz
	Bit Depth		20 bit (Internal Processing)
	Color Gamut		sRGB (DCI-P3 98%)
Refresh Rate		3840 Hz	
Electrical Parameters	Power Consumption*	Max	3.68 kW
		Typical	1.24 kW
Additional Features	Picture Quality		LED HDR, HDR 10+ Support
	Media Player		Signage Player Box (S-Box)
	Input		HDMI(2.0) x 2, DP x 1, USB 2.0 x 2, LAN x 1
	Certification		EMI Class B, Safety 60950-1

Note: Specifications are not final and are subject to change without notice

*Applies to UHD screen size

Configuration



About Samsung Electronics Co., Ltd.

Samsung Electronics Co., Ltd. inspires the world and shapes the future with transformative ideas and technologies. The company is redefining the worlds of TVs, smartphones, wearable devices, tablets, cameras, digital appliances, medical equipment, network systems, and semiconductor and LED solutions. For the latest news, please visit Samsung Newsroom at <http://news.samsung.com>.

SMART LED Signage

For more information about Samsung SMART LED Signage, visit www.samsung.com/business or www.samsung.com/displaysolutions

Copyright © 2018 Samsung Electronics Co. Ltd. All rights reserved. Samsung is a registered trademark of Samsung Electronics Co. Ltd. Specifications and designs are subject to change without notice. Non-metric weights and measurements are approximate. All data were deemed correct at time of creation. Samsung is not liable for errors or omissions. All brand, product, service names and logos are trademarks and/or registered trademarks of their respective owners and are hereby recognized and acknowledged.

Samsung Electronics Co., Ltd.
416, Maetan 3-dong, Yeongtong-gu, Suwon-si, Gyeonggi-do 443-772, Korea

2018-07

SAMSUNG