

Disclaimer

This presentation has been prepared by Samsung Electronics Co., Ltd. (the "Company"). It does not purport to contain all the information that a prospective investor may require in connection with any potential investment in the Company. You should not treat the contents of this presentation, or any information provided in connection with it, as financial advice, financial product advice or advice relating to legal, taxation or investment matters.

No representation or warranty (whether express or implied) is made by the Company or any of its officers, advisers, agents or employees as to the accuracy, completeness or reasonableness of the information, statements, opinions or matters (express or implied) arising out of, contained in or derived from this presentation or provided in connection with it, or any omission from this presentation, nor as to the attainability of any estimates, forecasts or projections set out in this presentation.

This presentation is provided expressly on the basis that you will carry out your own independent inquiries into the matters contained in the presentation and make your own independent decisions about the affairs, financial position or prospects of the Company. The Company reserves the right to update, amend or supplement the information at any time in its absolute discretion (without incurring any obligation to do so). Neither the Company, nor its related bodies corporate, officers, their advisers, agents and employees accept any responsibility or liability to you or to any other person or entity arising out of this presentation including pursuant to the general law (whether for negligence, under statute or otherwise). Any such responsibility or liability is, to the maximum extent permitted by law, expressly disclaimed and excluded. Nothing in this material should be construed as either an offer to sell or a solicitation of an offer to buy or sell securities. It does not include all available information and should not be used in isolation as a basis to invest in the Company.

All the depicted devices and features are fictitious creations. No simulation of any real product is intended.

Future Matters

This presentation contains reference to certain intentions, expectations, future plans, strategy and prospects of the Company. Those intentions, expectations, future plans, strategy and prospects may or may not be achieved. They are based on certain assumptions, which may not be met or on which views may differ and may be affected by known and unknown risks. The performance and operations of the Company may be influenced by a number of factors, many of which are outside the control of the Company. No representation or warranty, express or implied, is made by the Company, or any of its directors, officers, employees, advisers or agents that any intentions, expectations or plans will be achieved either totally or partially or that any particular rate of return will be achieved.

Given that risks and uncertainties may cause the Company's actual future results, performance or achievements to be materially different from those expected, planned or intended, recipients should not place undue reliance on these intentions, expectations, future plans, strategy and prospects. The Company does not warrant or represent that the actual results, performance or achievements will be as expected, planned or intended.

US Disclosure

This document does not constitute any part of any offer to sell, or the solicitation of any offer to buy, any securities in the United States or to, or for the account or benefit of any "US person" as defined in Regulation S under the US Securities Act of 1993 ("Securities Act"). The Company's shares have not been, and will not be, registered under the Securities Act or the securities Laws of any state or other jurisdiction of the United States, and may not be offered or sold in the United States or to any US person without being so registered or pursuant to an exemption from registration including an exemption for qualified institutional buyers.

Samsung System LSI

Investor Presentation

2024

Contents

Business Update

Market Opportunities

Samsung Strategy

Key Takeaways

Financial Highlights

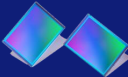
Steady growth based on endless technology innovations

On-device AI



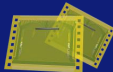
Pioneering with flagship processor

200 Megapixel

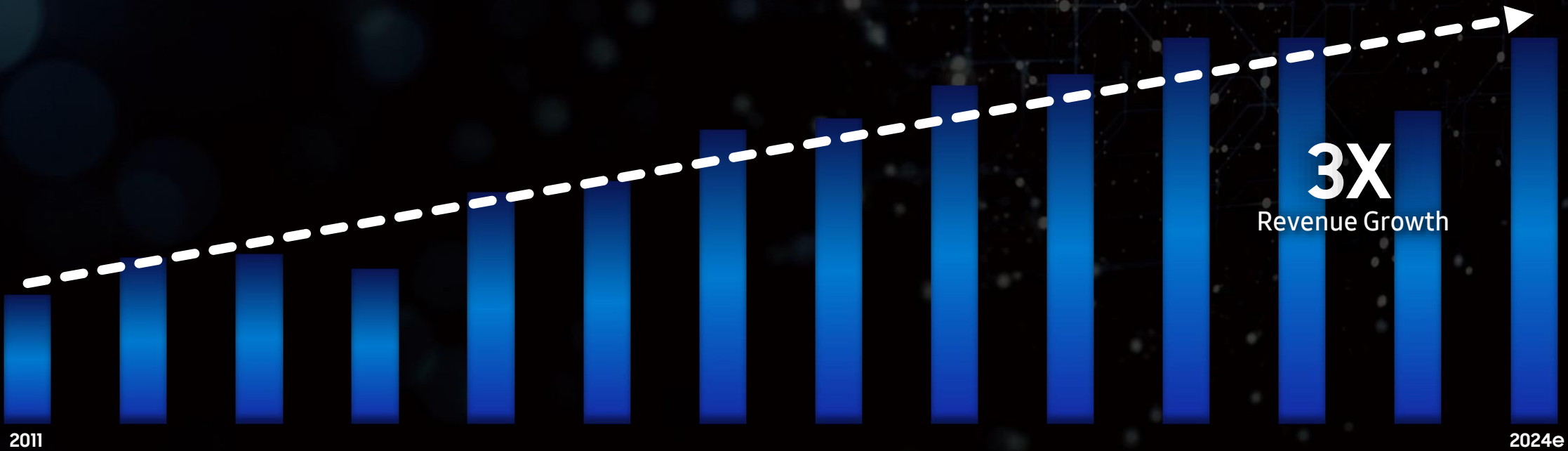


Expanded applications of 200MP image sensor

20+ Years



Leading display driver IC market



Business Portfolio

Broad range of logic chips for diverse applications

Mobile SoC Mobile CIS Power Management IC Display Driver IC Touch Controller NFC/eSE/SIM Banking/ID Security DTV SoC Auto SoC Auto CIS

Smartphone

Wearable

Auto

Robot

Global Network

Worldwide R&D expertise for top-notch technologies



 R&D Center
 Regional Office

* Excluding domestic, as of September, 2023 .

Contents

Business Update

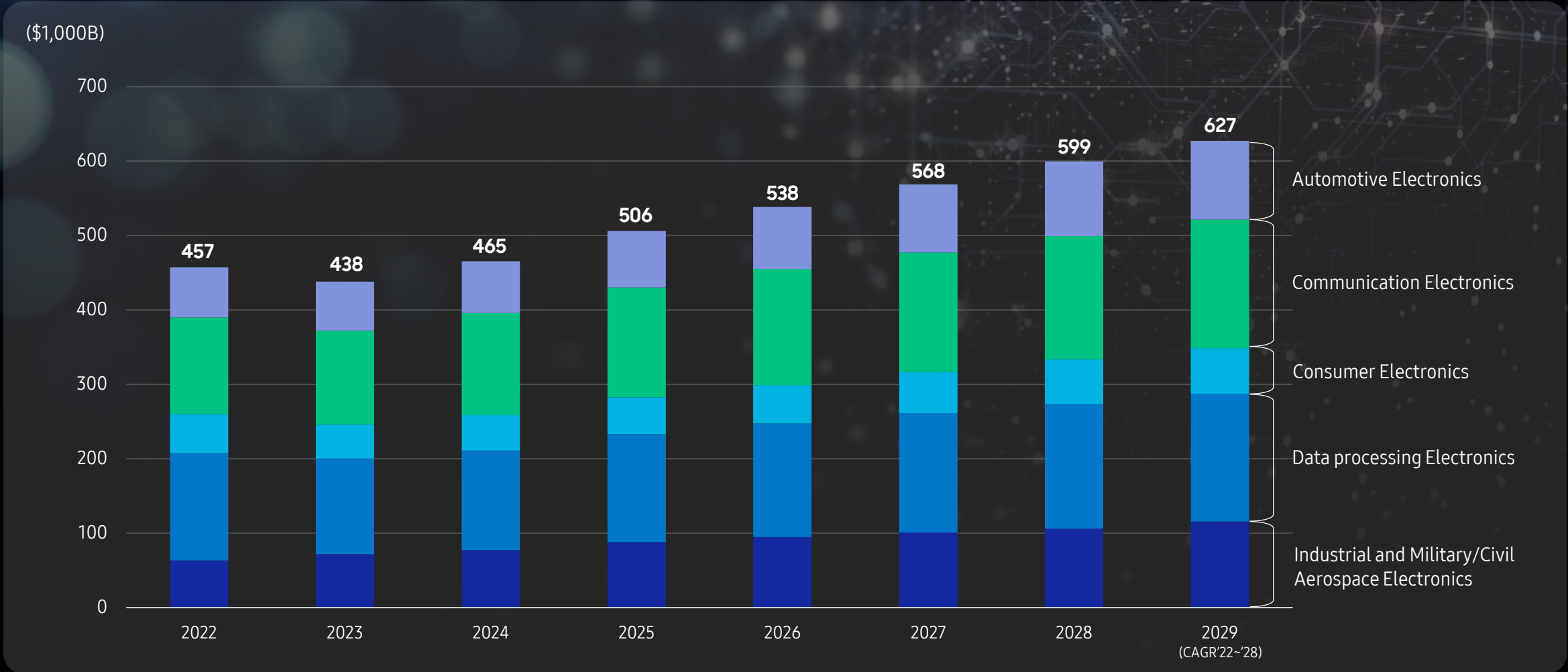
Market Opportunities

Samsung Strategy

Key Takeaways

Logic Chips Market Forecast

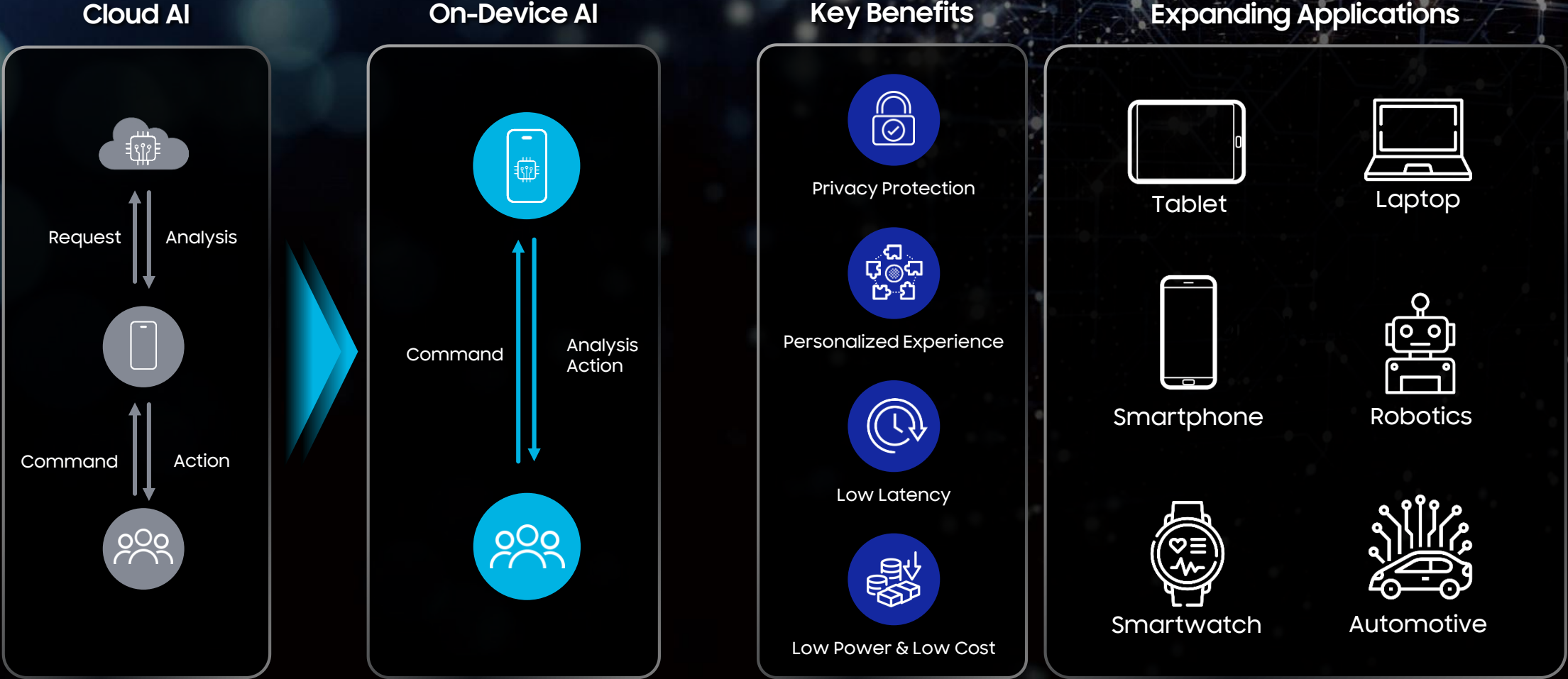
Anticipating long-term stable growth after recovery in 2024



* Gartner '24.3

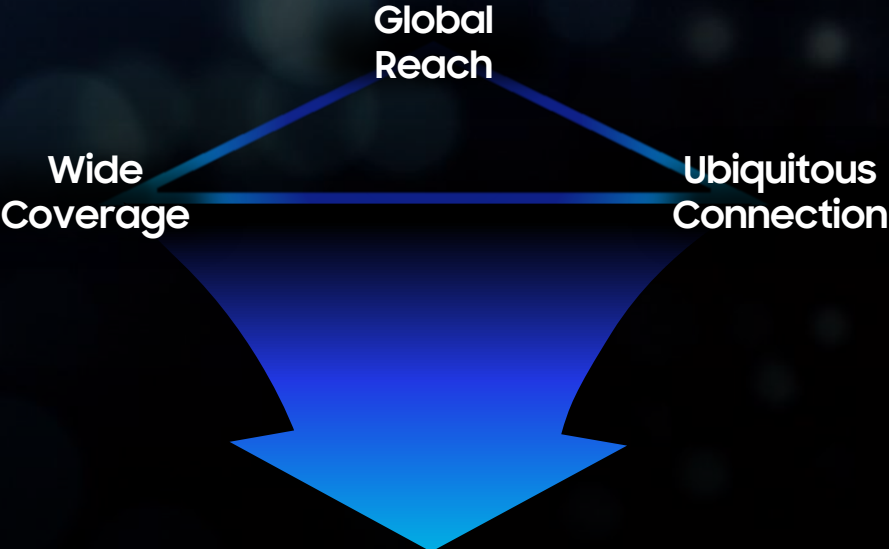
Enlarging Edge of On-device AI

On-device AI's strengths spread to a wide range of applications



Extending Connectivity beyond Terrestrial

Uninterrupted connectivity without blind spot with non-terrestrial network

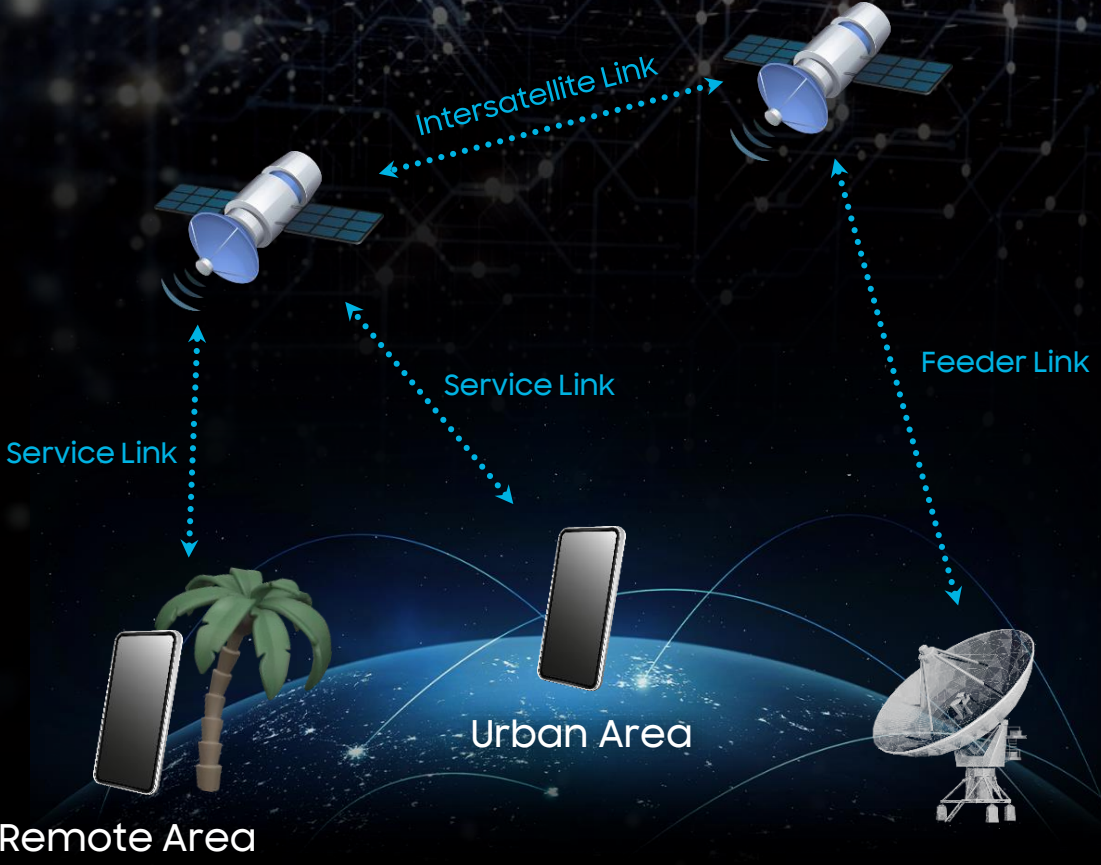


NB-IoT NTN

Emergency Message

5G NR NTN

Multimedia Streaming



Growing Needs for Advanced Mobile Photography

Sophisticated development in mobile image sensor for pro-grade quality of mobile camera



Powerful Zoom



High-Dynamic Range



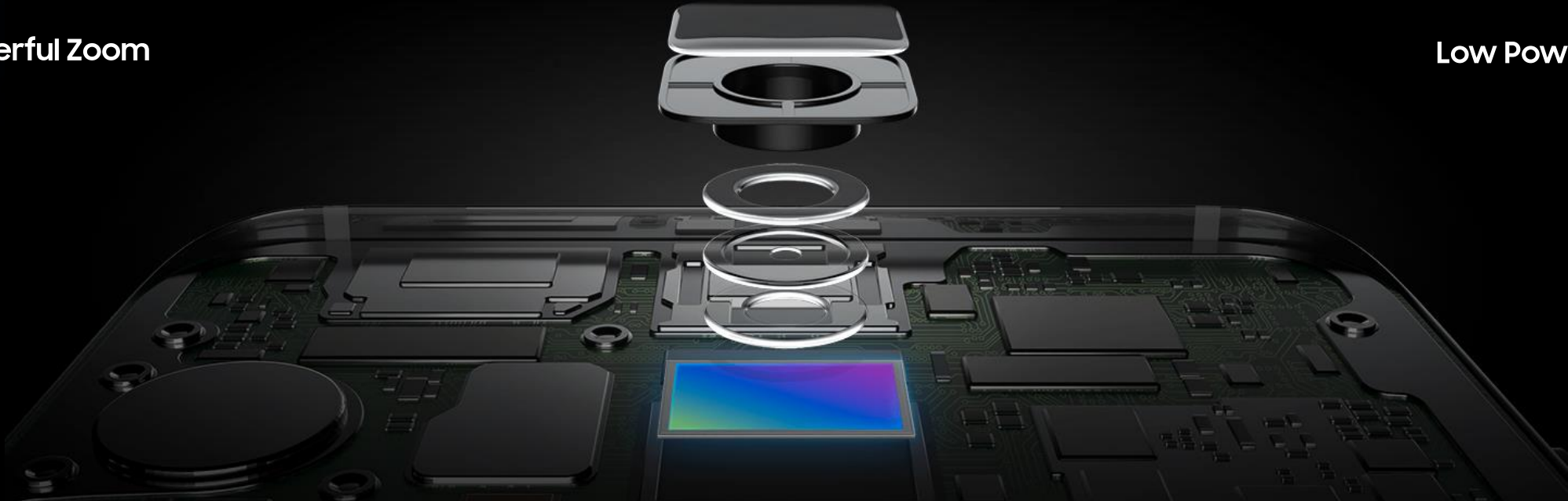
AI Integration



Low-light Sensitivity




Low Power



Emerging Markets of New Applications

Rising demand for specialized sensors for a variety of devices



Touch Sensor

Camera Image Sensor

RGB Sensor

Distance Sensor

Temperature Sensor

This block features a white service robot holding a cardboard box. Surrounding the robot are five circular callouts, each representing a different sensor type: Touch Sensor (top right), Camera Image Sensor (top left), RGB Sensor (middle left), Distance Sensor (bottom left), and Temperature Sensor (bottom left).



ToF Sensor

RGB Sensor

Tracking Sensor

Global Shutter Sensor

This block features a person wearing a VR headset. Surrounding the person are four circular callouts, each representing a different sensor type: ToF Sensor (top right), RGB Sensor (middle right), Tracking Sensor (bottom right), and Global Shutter Sensor (bottom left).

Emphasizing Visual Experience across Devices

Diversified needs for display driver IC in varied form factors



OLEDoS Solution

Real OLED Solution

Low Power Design

Higher Frequency



Better Image Reproduction on Displays

Explosive Expansion of AI and its Applications

Rising importance of power and security solutions for sustainable AI



Contents

Business Update

Market Opportunities

Samsung Strategy

Key Takeaways

Strategy for the Growth

Provide platform solutions acting as all the organs in the system



Processor (System on Chip)

Innovative mobile experience with Exynos processor



Deca-core CPU with
Tri-cluster Architecture



NPU Dedicated for
On-device AI



Hardware Ray Tracing



Up to 320MP Camera



Modem & Connectivity

Swift and seamless 5G connectivity with Exynos modem



3GPP Release 17

The first to FRI-only 11.2Gbps*

Dual support of NB-IoT NTN & 5G NR NTN

4nm EUV process for power efficiency

* As determined by industry public announcement dates.

Image Sensor

Improving both mobile camera experience and machine vision with ISOCELL

AI-integrated Solution for 200MP Sensors

ISOCELL Zoom Anyplace

Integrated AI solutions of video and image capture utilizing 200MP image sensor.



▲ Full mode

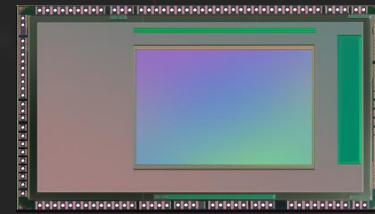


▲ Zoom-in mode

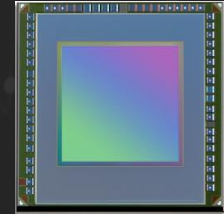
New Product Lineup for Machine Vision

ISOCELL Vizion™

New sensor product lineup for machine vision, perceiving 3D information such as distance and motion



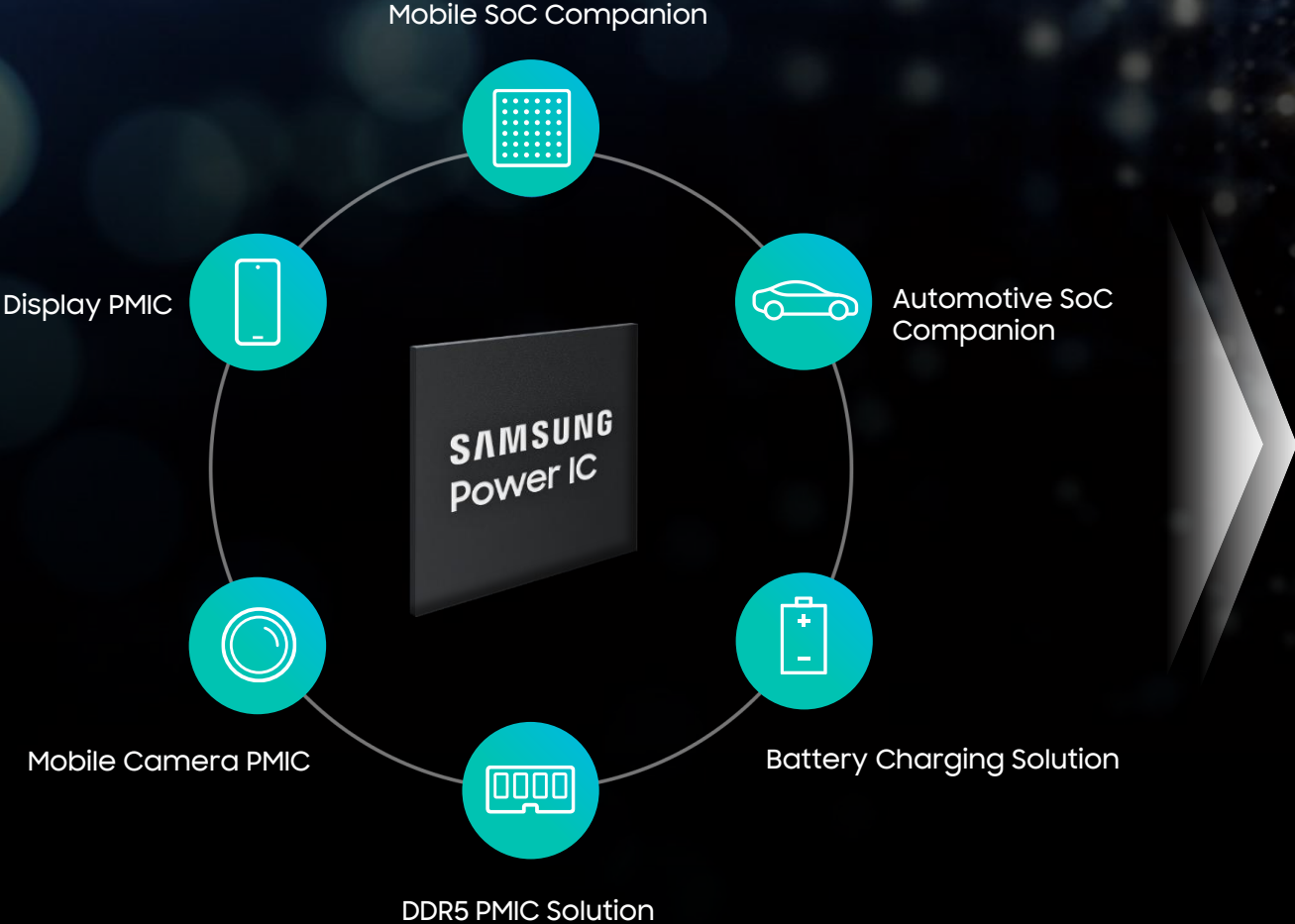
▲ ToF Sensor



▲ Global Shutter Sensor

Power Management IC

Comprehensive power solution for improved power efficiency of diverse applications



Power Efficiency

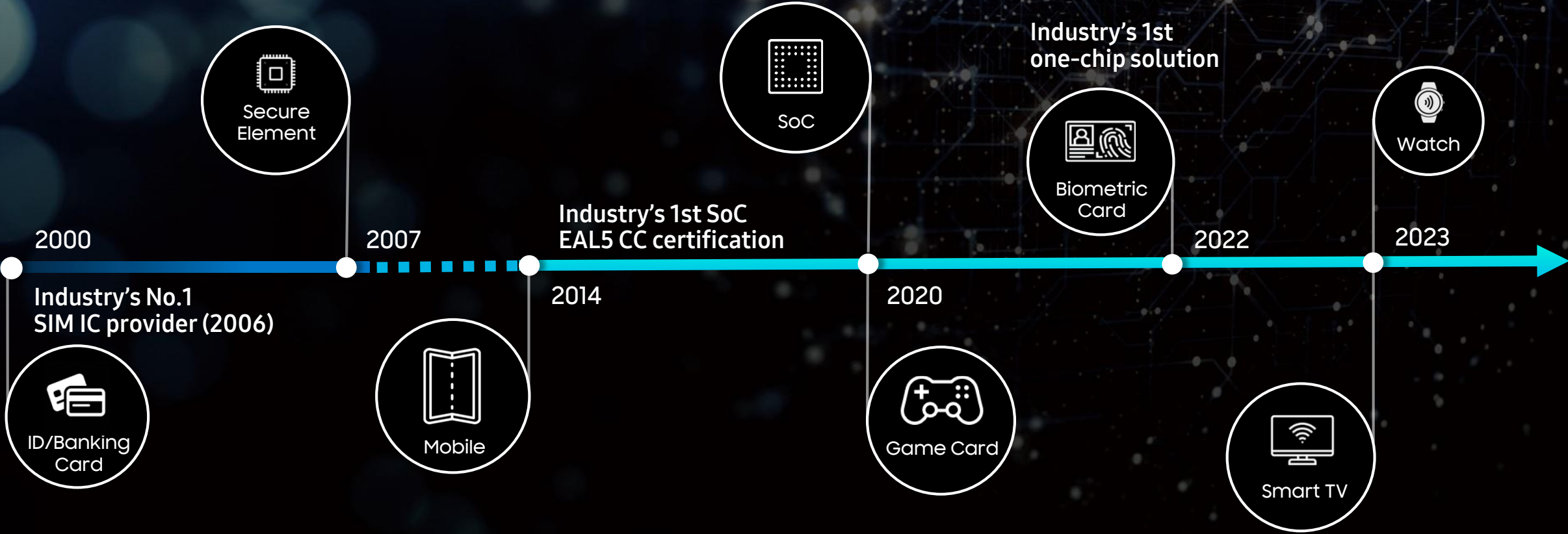
Cost Reduction

Lower Carbon Emission

Sustainability

Security Solution

Protecting privacy and safety across the various platforms



Samsung Solutions for Mobile Platform

SAMSUNG

ISOCELL Image Sensor

Mobile image sensor
ToF sensor

Exynos Processor

Mobile SoC
LTE/5G modem
RF ICs, UWB

Power Management IC

SoC PMIC
eMMC / UFS PMIC
OLED display PMIC
Wireless charging IC



SIM / NFC / Secure Element

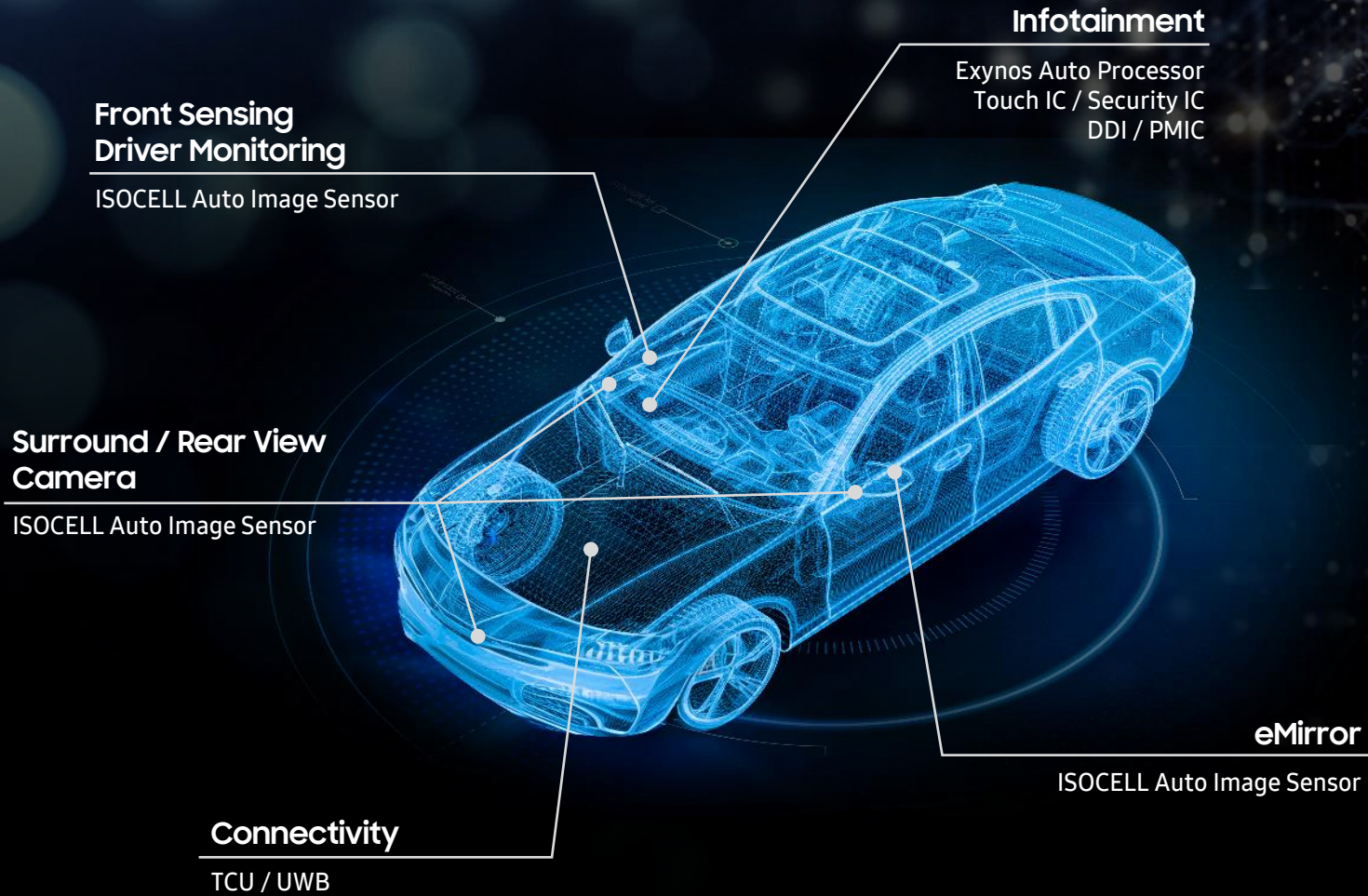
SIM & NFC chip for mobile payment
iSE, iSIM

Display Driver IC

Mobile DDI
- Timing controller
- Source driver
- Gate driver
OLED touch-embedded DDI

Samsung Solutions for Auto Platform

SAMSUNG



Exynos Auto

Auto SoC
TCU, UWB

ISOCELL Auto

Automotive image sensor

Security Solutions

Security solutions for auto systems
& personal information

Display Driver IC

DDI, Touch controllers

Samsung Solutions for Robot Platform

SAMSUNG

Exynos SIP Module

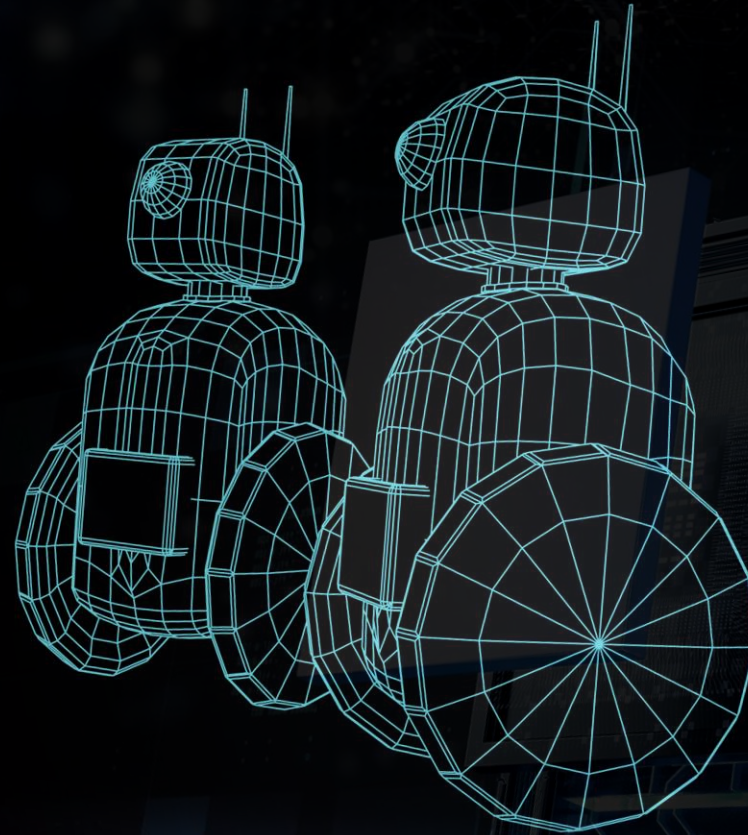
Robot SoC
PMIC for SoC

ISOCELL Image Sensor

ToF sensor
Global shutter sensor

Modem & Connectivity

LTE/5G modem
RF ICs, UWB



Contents

Business Update

Market Opportunities

Samsung Strategy

Key Takeaways

Key Takeaways

- ✓ **Offering a platform solution based on a comprehensive product portfolio**
- ✓ **Pioneering advancements in on-device AI with AI dedicated NPU**
- ✓ **Elevating user experiences across applications with innovative SoC and image sensors**
- ✓ **Empowering AI solutions with power & security solutions for various applications**

SAMSUNG